

TARZANA EXECUTIVE

18401 Burbank Boulevard



Tarzana Office Space For Lease

18401 Burbank Boulevard
Tarzana, CA 91356



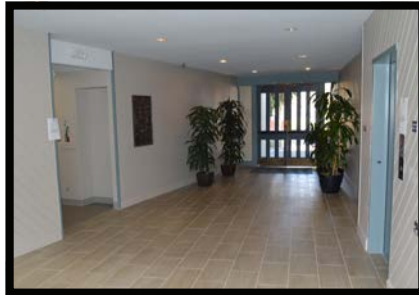
MARK LEONARD
Principal
818.449.4414
mleonard@lee-re.com
BRE# 01031863

JARED SMITS
Principal
818.444.4986
jsmits@lee-re.com
BRE# 01839532

TARZANA EXECUTIVE

18401 Burbank Blvd • Tarzana, CA 91356

OFFICE SPACE FOR LEASE



FEATURES & BUILDING HIGHLIGHTS

- Part of three-building office complex comprised of 160,345 SF
- Highly visible from the US 101 Ventura Freeway
- Immediately adjacent to Providence Tarzana Medical Center and dozens of retail amenities
- Amazing views of the San Fernando Valley
- Prominent signage opportunities available including freeway visible building signs and monument signs
- Extensive full-building renovations including all new corridors, restrooms, elevators and elevator lobbies
- Onsite management
- Immediate occupancy

PROPERTY DETAILS

- Lease Rate: \$2.00 RSF Full Service Gross
- Lease Term: 2-10 Years
- Availability: 1,064 - 1,622 Square Feet
- Parking: \$90/Month/Unreserved
\$110/Month/Reserved
- 3.0/1000 SF Leased
 - Valet Parking Available

AVAILABILITY

SUITE	SQ. FT.	DESCRIPTION
215	1,622 RSF	
221	1,081 RSF	

TARZANA EXECUTIVE

18401 Burbank Blvd • Tarzana, CA 91356

OFFICE SPACE FOR LEASE



LEASING INFORMATION

MARK LEONARD

Principal

818.449.4414

mleonard@lee-re.com

BRE# 01031863

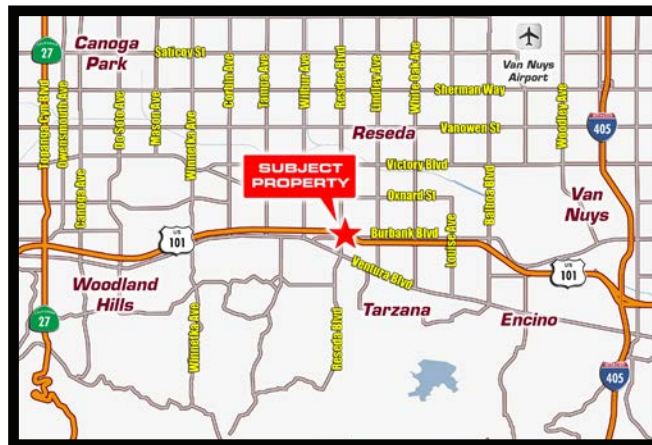
JARED SMITS

Principal

818.444.4986

jsmits@lee-re.com

BRE# 01839532



Website: www.lee-associates.com



COMMERCIAL REAL ESTATE SERVICES

Lee & Associates® - LA North/Ventura, Inc.

Corporate ID #01191898

A Member of the Lee & Associates®

Group of Companies

26050 Mureau Rd., Suite 101, Calabasas, CA 91302

P:818.223.4388 F:818.591.1450

No warranty or representation is made to the accuracy of the foregoing information. Terms of sale or lease and availability are subject to change or withdrawal without notice. Rev.02-02-002021