

TECH CIRCLE BUSINESS CENTER

5401 Tech Circle • Moorpark, CA 93021

FOR SUBLEASE

PROPERTY HIGHLIGHTS

- 2,017 rentable square foot office suite
- Abundant window line
- Utilities and building standard suite janitorial service included in the rental rate
- Four parking stalls for every one thousand square feet leased free of charge
- Great location with convenient access to the 101/118/23 freeways
- Excellent Moorpark demographics
- Pride of ownership is evident
- Recently renovated office suite



2,017 RENTABLE SQUARE FEET OF OFFICE SPACE AVAILABLE FOR SUBLEASE

For more information please contact:

JOE JUSKO
PRINCIPAL
818.223.4397
jjusko@lee-re.com
License ID #00875413

CORY RICHMOND
VICE PRESIDENT
818.444.4915
crichmond@lee-re.com
License ID #01225466



No warranty or representation is made to the accuracy of the foregoing information. Terms of sale or lease and availability are subject to change or withdrawal without notice.

Lee & Associates® - LA North/Ventura, Inc. • Corporate ID #01191898
A Member of the Lee & Associates® Group of Companies
26050 Mureau Rd., Suite 101, Calabasas, CA 91302 • P:818.223.4388 F:818.591.1450

TECH CIRCLE BUSINESS CENTER

5401 Tech Circle • Moorpark, CA 93021

FOR SUBLEASE

For more information please contact:

JOE JUSKO
PRINCIPAL
818.223.4397
jjusko@lee-re.com
License ID #00875413

CORY RICHMOND
VICE PRESIDENT
818.444.4915
crichmond@lee-re.com
License ID #01225466

www.lee-associates.com

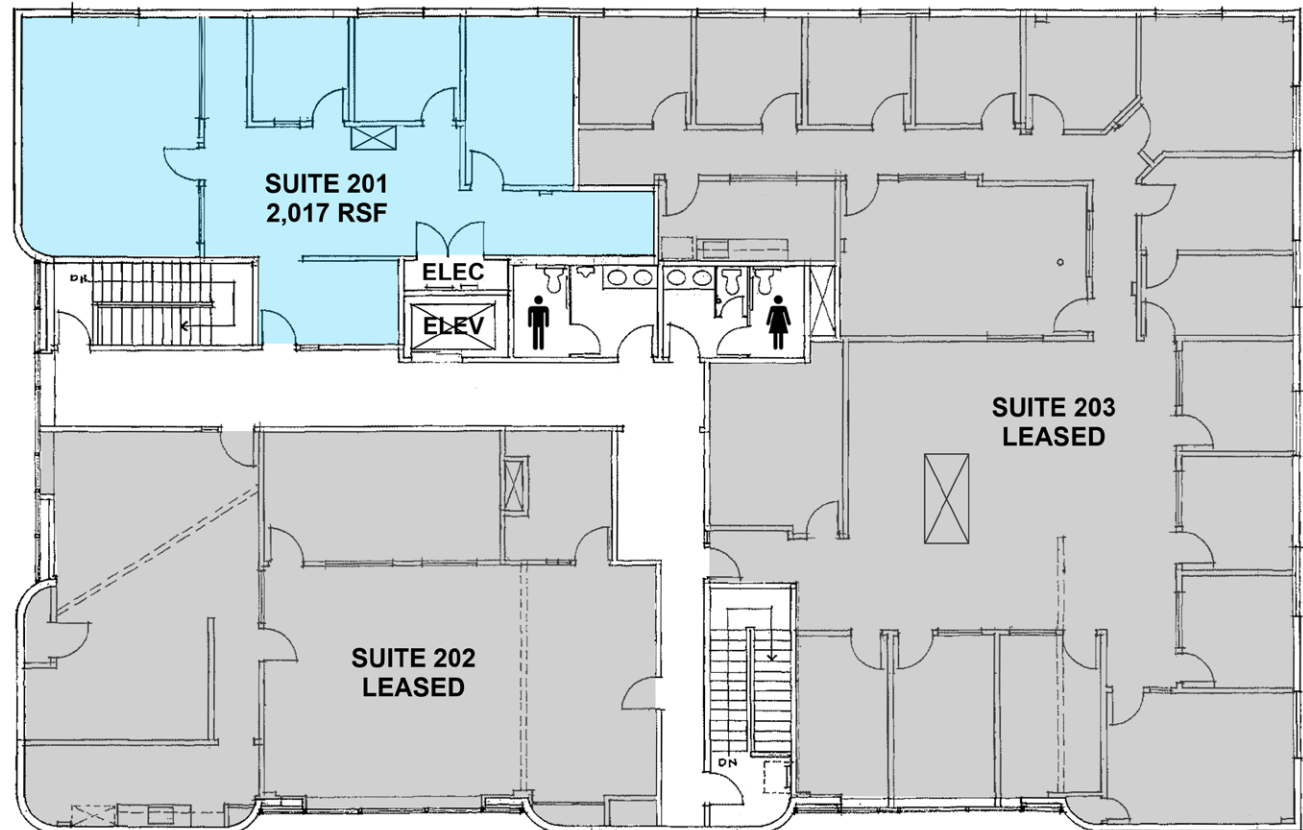


Lee & Associates® - LA North/Ventura, Inc.
Corporate ID #01191898
A Member of the Lee & Associates®
Group of Companies
26050 Mureau Rd., Suite 101
Calabasas, CA 91302
P:818.223.4388 F:818.591.1450

No warranty or representation is made to the accuracy of the foregoing information. Terms of sale or lease and availability are subject to change or withdrawal without notice.

5401 TECH CIRCLE AVAILABILITY

SUITE	SIZE	RATE	AVAILABILITY	COMMENTS
201	2,017 RSF	\$1.10/RSF FSG	Immediate	Sublease



*Not to scale

TECH CIRCLE BUSINESS CENTER

5401 Tech Circle • Moorpark, CA 93021

FOR SUBLEASE

For more information please contact:

JOE JUSKO
PRINCIPAL
818.223.4397
jjusko@lee-re.com
License ID #00875413

CORY RICHMOND
VICE PRESIDENT
818.444.4915
crichmond@lee-re.com
License ID #01225466

www.lee-associates.com



Lee & Associates® - LA North/Ventura, Inc.
Corporate ID #01191898
A Member of the Lee & Associates®
Group of Companies
26050 Mureau Rd., Suite 101
Calabasas, CA 91302
P:818.223.4388 F:818.591.1450

No warranty or representation is made to the accuracy of the foregoing information. Terms of sale or lease and availability are subject to change or withdrawal without notice.



AMENITIES AERIAL