

SIMI VALLEY OFFICE SPACE

2259 Ward Avenue • Simi Valley, CA 93065

FOR LEASE

PROPERTY HIGHLIGHTS

- 13,219 RSF Two story office space (Divisible)
- Completely Brand New Interior Construction! Must See!
- Beautiful Open Floor Plan w/Full Window Lines on 2nd Floor
- Abundant free parking
- Great location with convenient access to the 118/23/101 Freeways
- Excellent Lease Rate Value

Brand New Office Space! Special \$0.79 SF Intro Rate! Call Broker for Details!



4,880-13,219 SF OF OFFICE SPACE AVAILABLE FOR LEASE

For more information please contact:

JOE JUSKO
PRINCIPAL
818.223.4397
jjusko@lee-re.com
License ID #00875413

 **LEE &
ASSOCIATES**
COMMERCIAL REAL ESTATE SERVICES

Lee & Associates® - LA North/Ventura, Inc. • Corporate ID #01191898
A Member of the Lee & Associates® Group of Companies
26050 Mureau Rd., Suite 101, Calabasas, CA 91302 • P:818.223.4388 F:818.591.1450

No warranty or representation is made to the accuracy of the foregoing information. Terms of sale or lease and availability are subject to change or withdrawal without notice.

SIMI VALLEY OFFICE SPACE

2259 Ward Avenue • Simi Valley, CA 93065

FOR LEASE

For more information please contact:

JOE JUSKO
PRINCIPAL
818.223.4397
jjusko@lee-re.com
License ID #00875413

www.jjusko.com



COMMERCIAL REAL ESTATE SERVICES

Lee & Associates® - LA North/Ventura, Inc.
Corporate ID #01191898
A Member of the Lee & Associates®
Group of Companies
26050 Mureau Rd., Suite 101
Calabasas, CA 91302
P:818.223.4388 F:818.591.1450

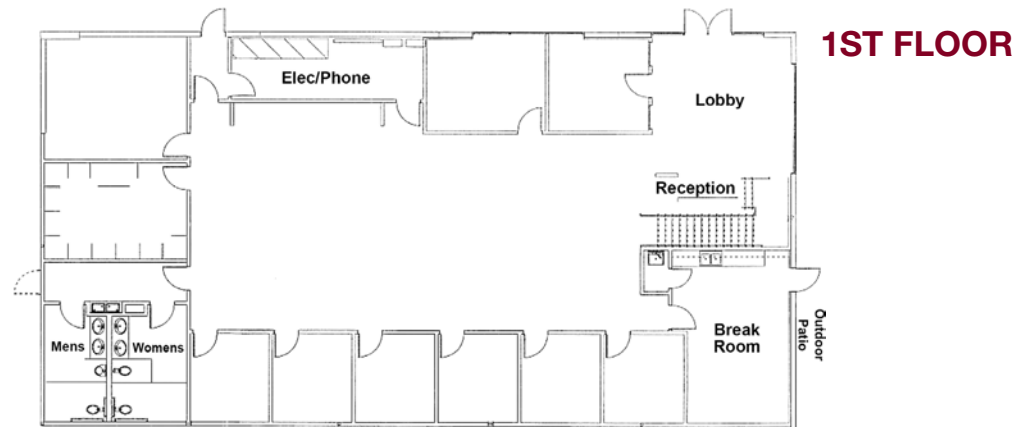
No warranty or representation is made to the accuracy of the foregoing information. Terms of sale or lease and availability are subject to change or withdrawal without notice.

AVAILABILITY

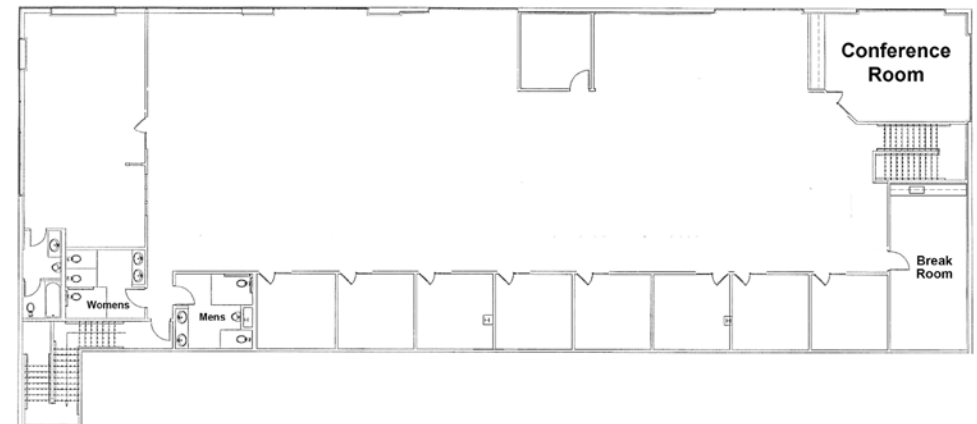
SUITE	SIZE	RATE	AVAILABILITY	COMMENTS
1st Floor	4,880 SF**	\$1.30* MG	Immediate	• Brand New Interiors!
2nd Floor	8,339 SF**	\$1.30* MG	Immediate	• Brand New Interiors!
TOTAL	13,219 SF			

*Plus Utilities & Janitorial

**Can be leased separately - Call Broker



2ND FLOOR



SIMI VALLEY OFFICE SPACE

2259 Ward Avenue • Simi Valley, CA 93065

FOR LEASE

For more information please contact:

JOE JUSKO

PRINCIPAL

818.223.4397

jjusko@lee-re.com

License ID #00875413

www.jjusko.com



COMMERCIAL REAL ESTATE SERVICES

Lee & Associates® - LA North/Ventura, Inc.

Corporate ID #01191898

A Member of the Lee & Associates®

Group of Companies

26050 Mureau Rd., Suite 101

Calabasas, CA 91302

P:818.223.4388 F:818.591.1450

No warranty or representation is made to the accuracy of the foregoing information. Terms of sale or lease and availability are subject to change or withdrawal without notice.

INTERIOR PHOTOS



SIMI VALLEY OFFICE SPACE

2259 Ward Avenue • Simi Valley, CA 93065

FOR LEASE

For more information please contact:

JOE JUSKO
PRINCIPAL
818.223.4397
jjusko@lee-re.com
License ID #00875413

www.jjusko.com

 **LEE &
ASSOCIATES**
COMMERCIAL REAL ESTATE SERVICES

Lee & Associates® - LA North/Ventura, Inc.
Corporate ID #01191898
A Member of the Lee & Associates®
Group of Companies
26050 Mureau Rd., Suite 101
Calabasas, CA 91302
P:818.223.4388 F:818.591.1450

No warranty or representation is made to the accuracy of the foregoing information. Terms of sale or lease and availability are subject to change or withdrawal without notice.

INTERIOR PHOTOS



