



*NOT ACTUAL SUITE



CREATIVE OFFICE FOR LEASE
3767 OVERLAND AVENUE, LOS ANGELES, CA 90034

PREMISES Suite 103 ± 2,405 SF
Suite 108 ± 1,373 SF
Suite 110 ± 1,489 SF
Suite 111 ± 1,455 SG

RENT \$3.65/ SF MG

OCCUPANCY Suites 108 & 110 - March 2021
Suite 111 - April 2021
Suite 103 - June 2021

PARKING 2 Spaces @ \$165/Space/Month

TERM 2 Years+

FEATURES - Operable Windows and Glass Roll-up Door
- Creative Loft
- Across from Coffee Bean & LA Fitness
- Central Location

CONTACT **Doug Marshall, SIOR** 310.899.2745
dmarshall@leewestla.com AGT DRE 00869275
Gage Danley 310.899.2749
gdanley@leewestla.com AGT DRE 02075191



1508 17th Street, Santa Monica, CA | 310.899.2700
WWW.LEEWESTLA.COM | DRE 01222000

No warranty or representation is made to the accuracy of the foregoing information. Terms of sale or lease are subject to change or withdrawal without notice.

*NOT ACTUAL SUITE

**3767 OVERLAND AVENUE
LOS ANGELES, CA 90034**



*NOT ACTUAL SUITE



*NOT ACTUAL SUITE

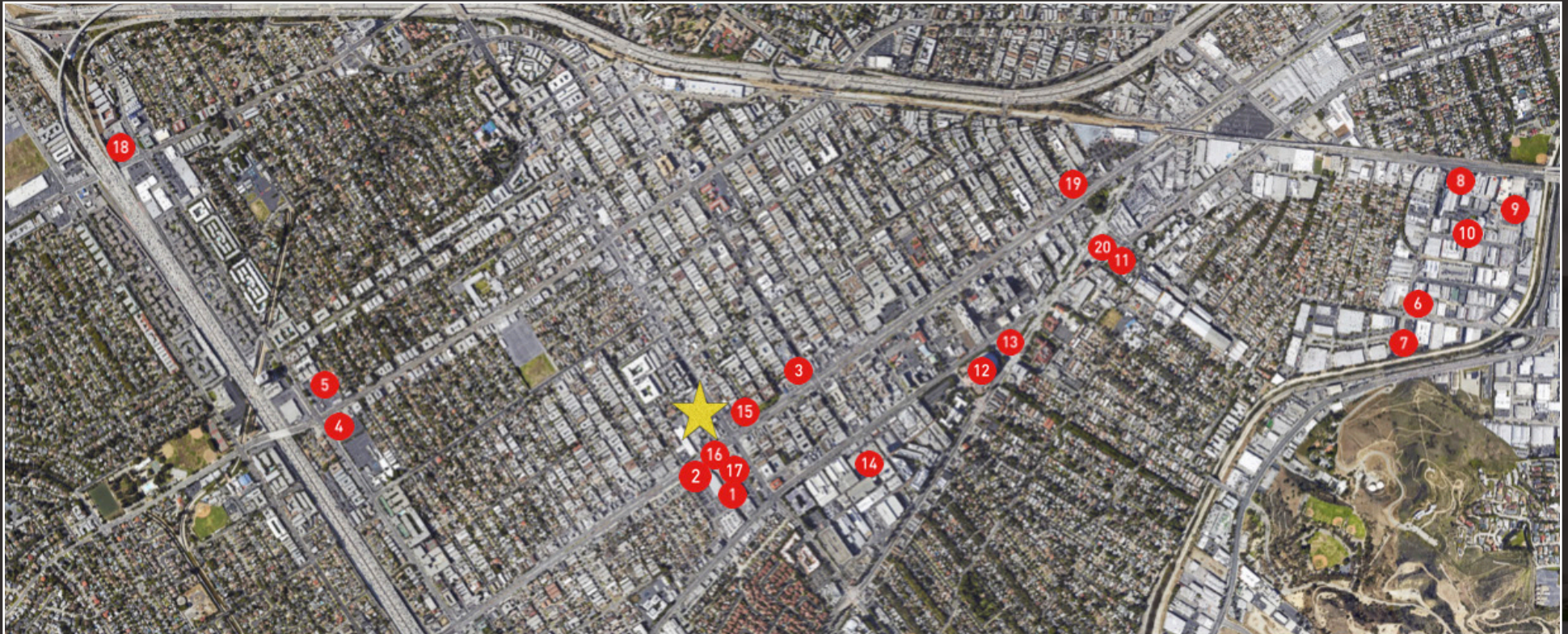


EWLA

A DIVISION OF
LEE & ASSOCIATES

*NOT ACTUAL SUITE

AREA MAP



1. LA Fitness

2. Panda Express

3. Coffee Bean

4. Burger King

5. Trader Joe's

6. Smashbox Studios

7. Beats by Dre

8. Big Picture Studios

9. POPSUGAR Inc.

10. Fourth Wall Studios

11. Culver Studios

12. Sony Picture Tours

13. Kirk Douglas Theatre

14. Sony Studio

15. McDonalds

16. California Pizza Kitchen

17. Smashburger

18. The Habit

19. In N Out

20. Tender Greens



A DIVISION OF
LEE & ASSOCIATES

Doug Marshall, SIOR

310.899.2745

dmarshall@leewestla.com

AGT DRE 00869275

Gage Danley

310.899.2749

gdanley@leewestla.com

AGT DRE 02075191