

# AVAILABLE FOR LEASE

APPROX. 8,292 SQUARE FEET

17842 COWAN STREET, SUITE 110, IRVINE, CA

**FREWAY  
SIGNAGE**



## PROPERTY FEATURES:

- Costa Mesa (55) freeway frontage and signage
- Two (2) private offices and large reception area
- Office and warehouse restrooms
- Two (2) ground level doors (1 - 12'x14' and 1 - 12'x12')
- 18' warehouse clearance
- Fenced area
- Very clean / move-in ready

For more information, please contact:

**CHRIS COYTE**

**President/Managing Director**

T: 949.724.4747

E: [ccoyle@lee-associates.com](mailto:ccoyle@lee-associates.com)

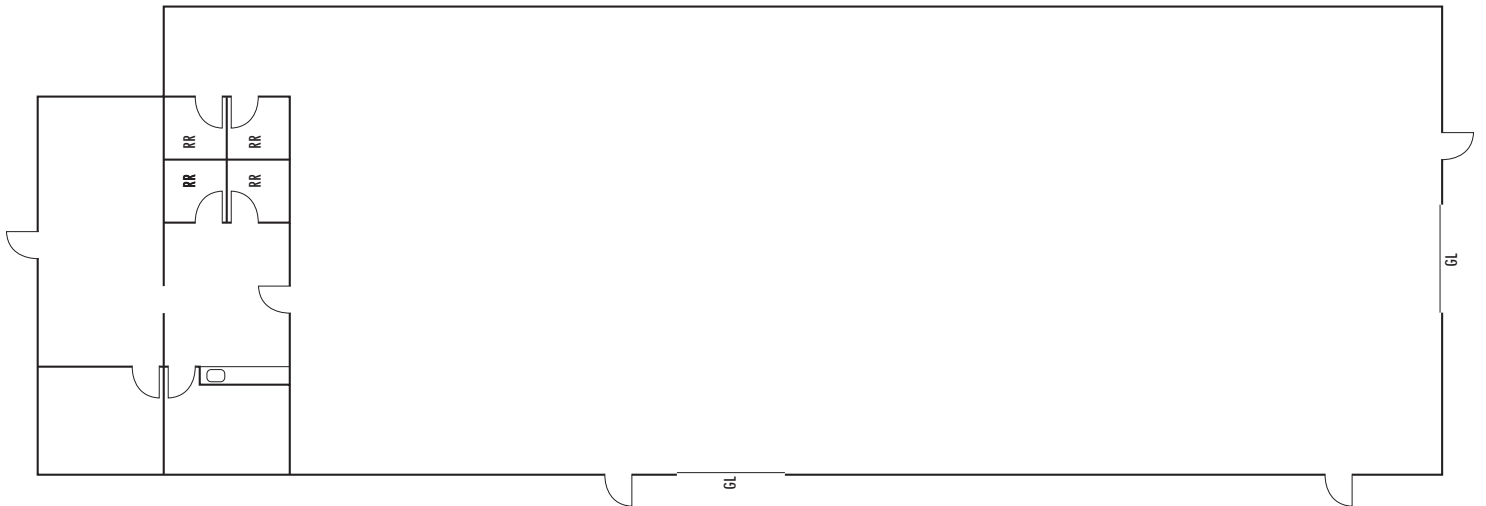
BRE #: 01017328



**LEE & ASSOCIATES® - NEWPORT BEACH** | Corporate ID #01197433  
100 Bayview Circle, Suite 600, Newport Beach, California 92660  
☎ 949.724.1000 | 📠 949.862.9048 | [www.lee-associates.com](http://www.lee-associates.com)

**DISCLAIMER:** The information contained herein has been obtained from the property owner or other third party and is provided to you without verification as to accuracy. We (Lee & Associates, its brokers, employees, agents, principals, officers, directors and affiliates) make no warranty or representation regarding the information, property, or transaction. You and your attorneys, advisors and consultants should conduct your own investigation of the property and transaction.

17842 COWAN STREET, SUITE 110, IRVINE, CA



Not to scale. Not as built.