



# CREATIVE OFFICE SUITES FOR LEASE



[www.leewestla.com](http://www.leewestla.com) | dre 01222000

13470 W WASHINGTON BLVD  
MARINA DEL REY, CA 90292



13470 W WASHINGTON BLVD  
MARINA DEL REY, CA 90292

PREMISES

Suite 201 - ± 2,719 SF  
Suite 250 - ± 544 SF

RENT

\$4.50/ SF MG

OCCUPANCY

30 Days

PARKING

2:1,000 at \$175/stall Monthly

FEATURES

- 700 SF shared rooftop deck
- Walking distance to many amenities
- 90 Walking Score
- Major street frontage
- Covered, private parking
- Costco, In-N-Out, Starbucks, Firestone Brewery, among many others are all within walking distance

CONTACT

Tibor Lody, SIOR

310.899.2720

tlody@leewestla.com

AGT DRE# 01261129

Aleks Trifunovic, SIOR

310.899.2721

atrifunovic@leewestla.com

BKR DRE# 01363109

Keith Fielding

310.899.2719

kfielding@leewestla.com

AGT DRE# 01729915

Mallory Moore

310.899.2718

mmoore@leewestla.com

AGT DRE# 02030584



A DIVISION OF



Lee & Associates Los Angeles West, Inc.

1508 17th Street, Santa Monica, CA 90404

310.899.2700 | www.leewestla.com | dre 01222000

No warranty or representation is made to the accuracy of the foregoing information.  
Terms of sale or lease are subject to change or withdrawal without notice.



A DIVISION OF  
**LEE & ASSOCIATES**

Tibor Lody, SIOR  
310.899.2720  
tlody@leewestla.com  
AGT DRE# 01261129

Aleks Trifunovic, SIOR  
310.899.2721  
atrifunovic@leewestla.com  
BKR DRE# 01363109

Keith Fielding  
310.899.2719  
kfielding@leewestla.com  
AGT DRE# 01729915

Mallory Moore  
310.899.2718  
mmoore@leewestla.com  
AGT DRE# 02030584

No warranty or representation is made to the accuracy of the foregoing information. Terms of sale or lease are subject to change or withdrawal without notice.



A DIVISION OF  
**LEE &  
ASSOCIATES**

Tibor Lody, SIOR  
310.899.2720  
tlody@leewestla.com  
AGT DRE# 01261129

Aleks Trifunovic, SIOR  
310.899.2721  
atrifunovic@leewestla.com  
BKR DRE# 01363109

Keith Fielding  
310.899.2719  
kfielding@leewestla.com  
AGT DRE# 01729915

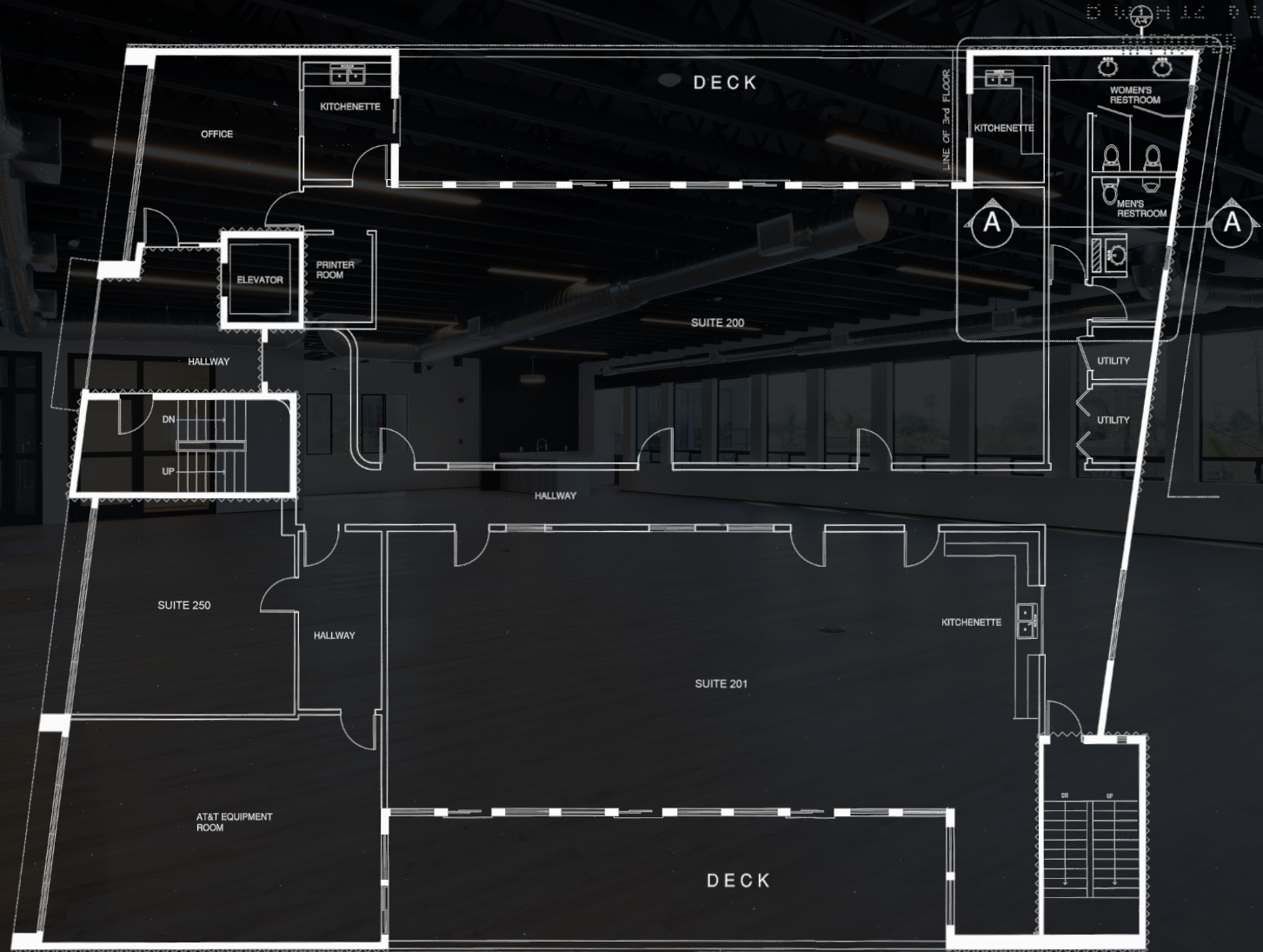
Mallory Moore  
310.899.2718  
mmoore@leewestla.com  
AGT DRE# 02030584

No warranty or representation is made to the accuracy of the foregoing information. Terms of sale or lease are subject to change or withdrawal without notice.



# SECOND FLOOR

13470 WASHINGTON BLVD.



EXISTING SECOND FLOOR



A DIVISION OF  
**LEE & ASSOCIATES**

Tibor Lody, SIOR  
310.899.2720  
tlody@leewestla.com  
AGT DRE# 01261129

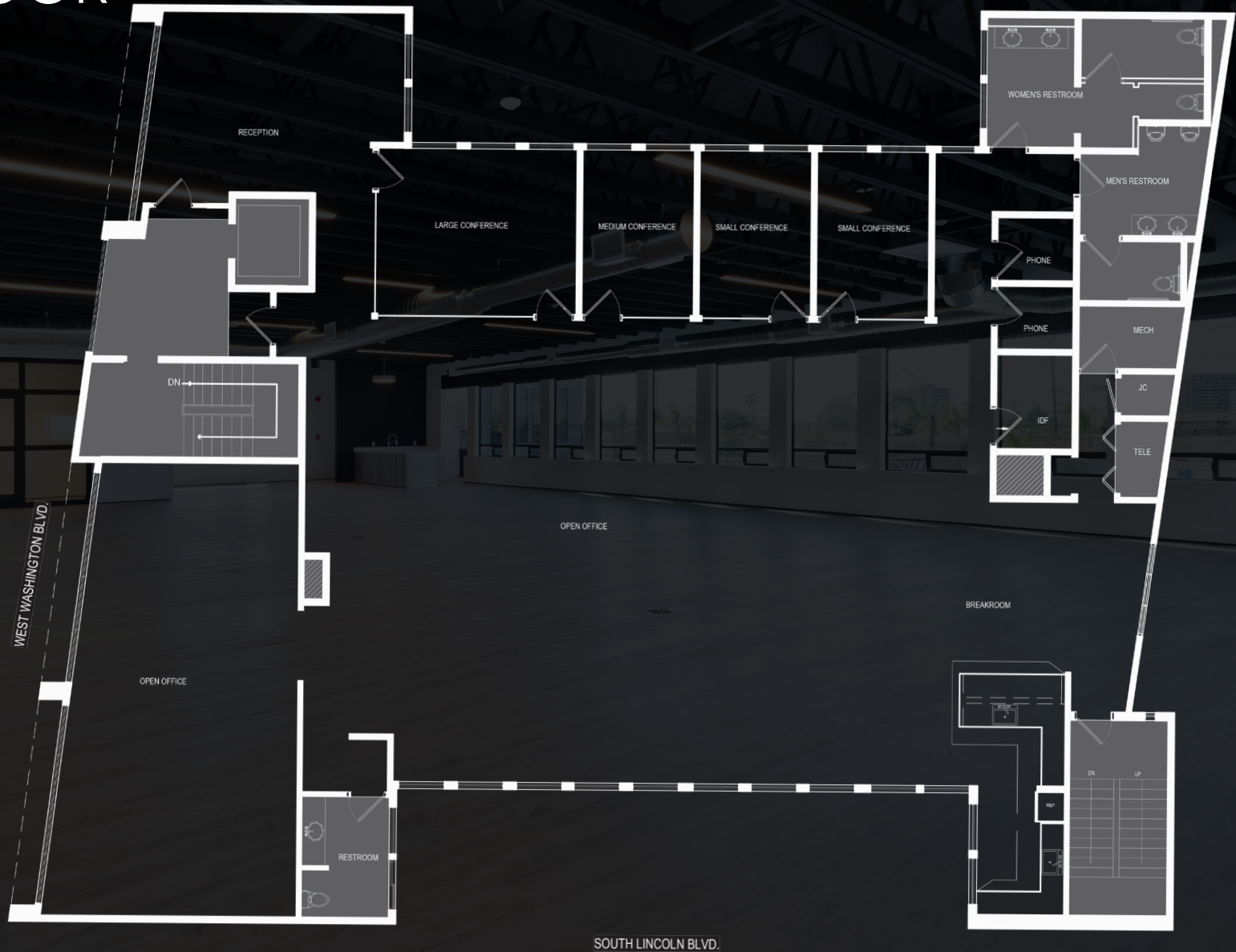
Aleks Trifunovic, SIOR  
310.899.2721  
atrifunovic@leewestla.com  
BKR DRE# 01363109

Keith Fielding  
310.899.2719  
kfielding@leewestla.com  
AGT DRE# 01729915

Mallory Moore  
310.899.2718  
mmoore@leewestla.com  
AGT DRE# 02030584

No warranty or representation is made to the accuracy of the foregoing information. Terms of sale or lease are subject to change or withdrawal without notice.

# THIRD FLOOR



A DIVISION OF  
**LEE & ASSOCIATES**

Tibor Lody, SIOR  
310.899.2720  
tlody@leewestla.com  
AGT DRE# 01261129

Aleks Trifunovic, SIOR  
310.899.2721  
atrifunovic@leewestla.com  
BKR DRE# 01363109

Keith Fielding  
310.899.2719  
kfielding@leewestla.com  
AGT DRE# 01729915

Mallory Moore  
310.899.2718  
mmoore@leewestla.com  
AGT DRE# 02030584

No warranty or representation is made to the accuracy of the foregoing information. Terms of sale or lease are subject to change or withdrawal without notice.