

[CLICK TO VIEW  
PROPERTY TOUR](#)



## DOWNTOWN OFFICE FOR SUBLEASE

801 SOUTH GRAND AVENUE #425  
LOS ANGELES, CA 90017



PREMISES ±5,465 SF

RENT \$2.75 FSG

TERM Through November 30, 2026

PARKING 2:1,000 SF at \$150/ unreserved, \$180 reserved

FEATURES

- Fantastic Downtown LA location
- Great Natural Light
- Kitchen
- Large Conference Room
- 24 Hour Front Desk and Security
- Across the street from CVS & Whole Foods
- Walking distance to Staples Center & LA Live

CONTACT **Tommy Isola, Principal**  
310.899.2709  
tisola@leewestla.com  
DRE 01974024

**Aleks Trifunovic, SIOR**  
310.899.2721  
atrifunovic@leewestla.com  
DRE 01363109



1508 17th Street, Santa Monica, CA | 310.899.2700  
WWW.LEEWESTLA.COM | DRE 01222000

No warranty or representation is made to the accuracy of the foregoing information.  
Terms of sale or lease are subject to change or withdrawal without notice.

801 S. GRAND AVE. #425  
LOS ANGELES, CA 90017





LWLA

A DIVISION OF

LEE & ASSOCIATES



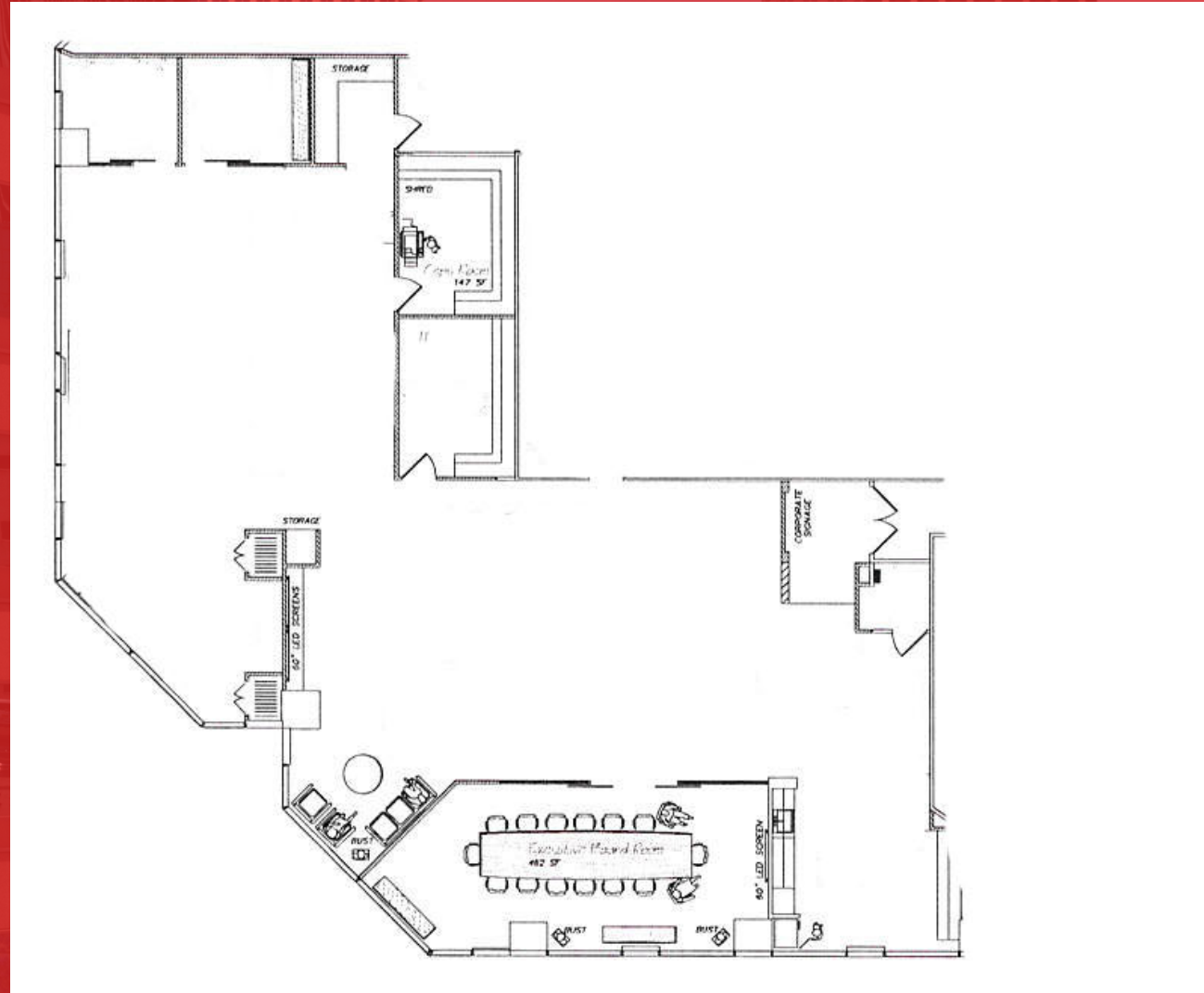


 LWLA

A DIVISION OF  
 LEE & ASSOCIATES



# FLOOR PLAN



A DIVISION OF



**Tommy Isola, Principal**  
310.899.2709  
tisola@leewestla.com  
DRE 01974024

**Aleks Trifunovic, SIOR**  
310.899.2721  
atrifunovic@leewestla.com  
DRE 01363109





A DIVISION OF



**Tommy Isola, Principal**  
310.899.2709  
tisola@leewestla.com  
DRE 01974024

**Aleks Trifunovic, SIOR**  
310.899.2721  
atrifunovic@leewestla.com  
DRE 01363109

No warranty or representation is made to the accuracy of the foregoing information. Terms of sale or lease are subject to change or withdrawal without notice.