

AVAILABLE FOR LEASE

MAXWELL COMMERCE CENTER

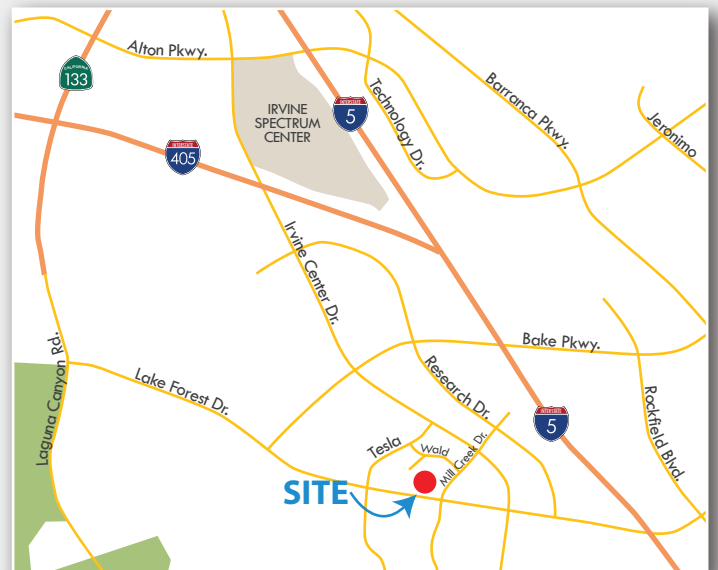
76 Maxwell • Irvine Spectrum, CA

±3,134 SQUARE FOOT INDUSTRIAL CONDO | LAKE FOREST DRIVE FRONTAGE



PROPERTY FEATURES:

- ±2,055 sq. ft. of 2-story office
- 4 large window offices and conference room
- 22' high warehouse
- End unit with excellent glass line
- Lake Forest Drive frontage
- Immediate access to the 405, 5 and 133 Freeways
- Lease rate: \$1.59 Net



Exclusively Listed By:



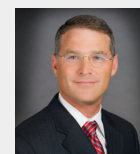
BJ FELL

Vice President
License ID# 01929179
949.790.3144
bfell@leeirvine.com



MARK JERUE

Senior Vice President
License ID# 01073399
949.790.3121
mjerue@leeirvine.com



CRAIG FITTERER

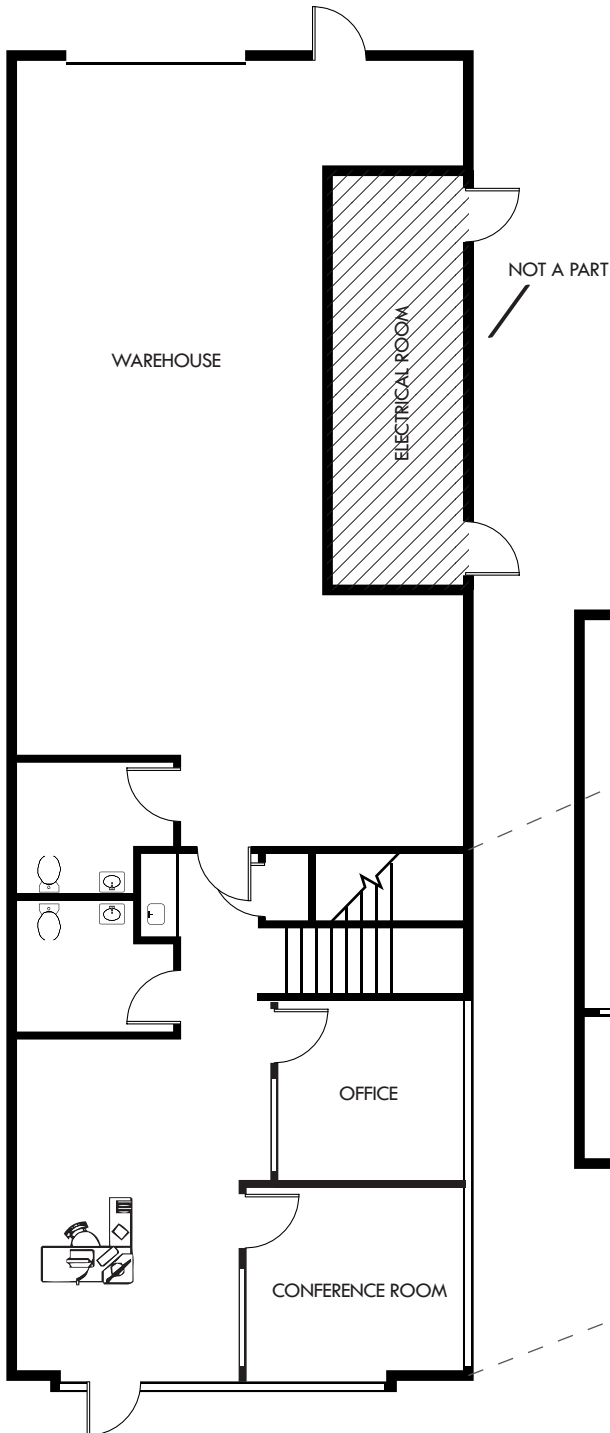
Senior Vice President
License ID# 01246929
949.790.3123
cfitterer@leeirvine.com

AVAILABLE FOR LEASE

MAXWELL COMMERCE CENTER

76 Maxwell • Irvine Spectrum, CA

±3,134 SQUARE FOOT INDUSTRIAL CONDO | LAKE FOREST DRIVE FRONTAGE



Exclusively Listed By:



BJ FELL
Vice President
License ID# 01929179
949.790.3144
bfell@leeirvine.com



MARK JERUE
Senior Vice President
License ID# 01073399
949.790.3121
mjerue@leeirvine.com



CRAIG FITTERER
Senior Vice President
License ID# 01246929
949.790.3123
cfitterer@leeirvine.com