



BROOKHOLLOW BUSINESS PARK

23091-23121 ANTONIO PARKWAY, RANCHO SANTA MARGARITA

EXCLUSIVELY LISTED BY

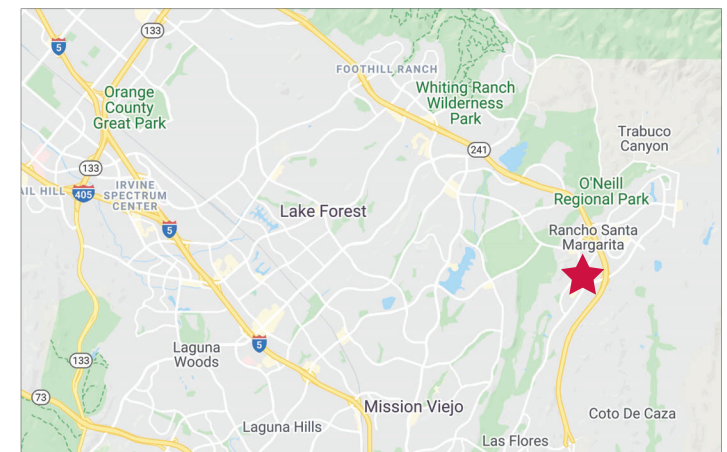
BJ FELL
License ID# 01929179
949.790.3144
bfell@leeirvine.com

MARK JERUE
License ID# 01073399
949.790.3121
mjerue@leeirvine.com

CRAIG FITTERER
License ID# 01246929
949.790.3123
cfitterer@leeirvine.com

PROPERTY FEATURES

- ±46,284 SF High Image Business Park
- 3.1:1000 Parking Ratio
- 14' Clear Height
- Ground Level Loading
- Fully Automated Sprinkler System
- 100 Amps, 120/208 Volt, 3 Phase Power
- Easy access to the 241 Toll Road
- Close Proximity to Retail Amenities



No warranty or representation is made to the accuracy of the foregoing information. Terms of sale or lease and availability are subject to change or withdrawal without notice.

BROOKHOLLOW BUSINESS PARK

23091-23121 ANTONIO PARKWAY, RANCHO SANTA MARGARITA



PROJECT AVAILABILITY

BUILDING	SUITE	TOTAL SF	OFFICE SF	RATE	AVAILABLE
23091 Antonio	315	1,293	750	\$1.35 NNN	2/1/2021



EXCLUSIVELY LISTED BY

BJ FELL
Vice President
License ID# 01929179
949.790.3144
bfell@leeirvine.com

MARK JERUE
Senior Vice President
License ID# 01073399
949.790.3121
mjerue@leeirvine.com

CRAIG FITTERER
Senior Vice President
License ID# 01246929
949.790.3123
cfitterer@leeirvine.com



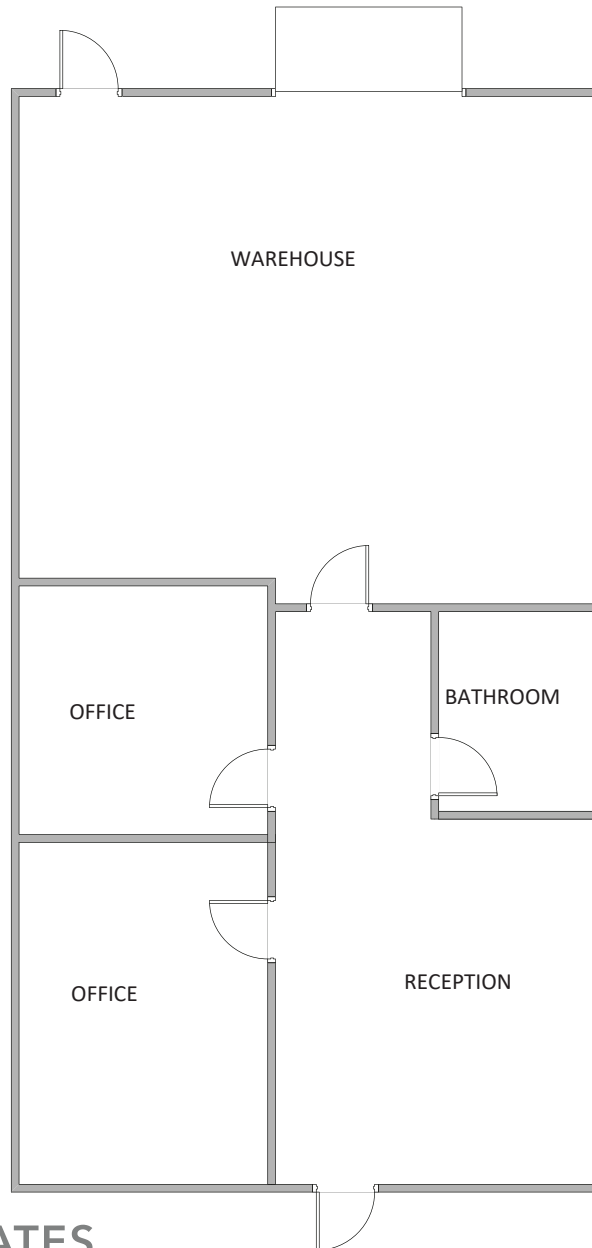
COMMERCIAL REAL ESTATE SERVICES

No warranty or representation is made to the accuracy of the foregoing information. Terms of sale or lease and availability are subject to change or withdrawal without notice.

BROOKHOLLOW BUSINESS PARK

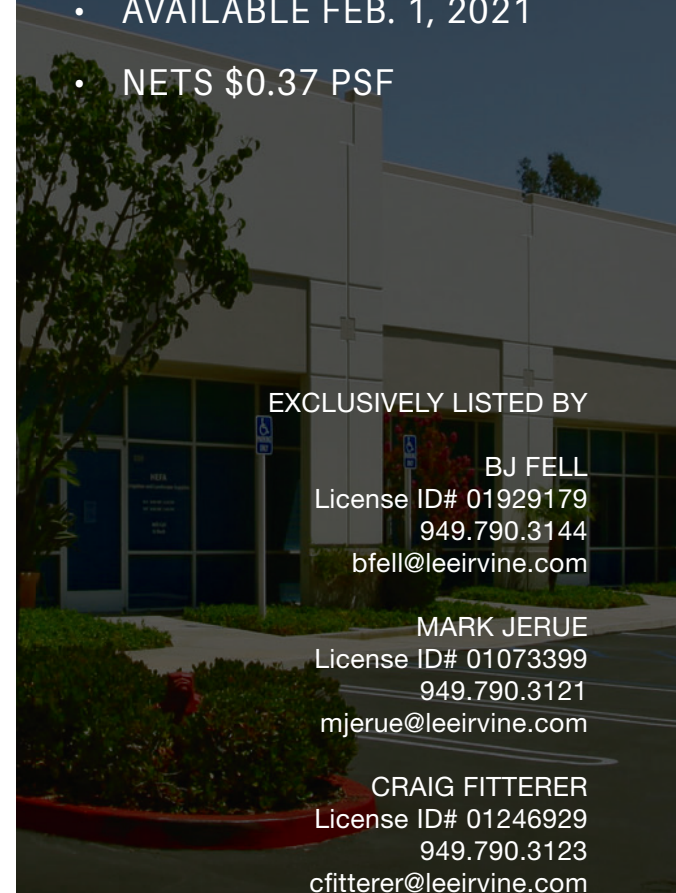
23091-23121 ANTONIO PARKWAY, RANCHO SANTA MARGARITA

FLOOR PLAN



23091 ANTONIO PARKWAY
SUITE 315 | ±1,293 SF

- ±750 SF OF OFFICE SPACE
- \$1.35 NNN
- AVAILABLE FEB. 1, 2021
- NETS \$0.37 PSF



EXCLUSIVELY LISTED BY

BJ FELL
License ID# 01929179
949.790.3144
bfell@leeirvine.com

MARK JERUE
License ID# 01073399
949.790.3121
mjerue@leeirvine.com

CRAIG FITTERER
License ID# 01246929
949.790.3123
cfitterer@leeirvine.com