



**SANTA MONICA CREATIVE OFFICE FOR LEASE**

201 WILSHIRE BOULEVARD, SANTA MONICA, CA 90401



**201 WILSHIRE BLVD.  
SANTA MONICA, CA 90401**

**PREMISES** Third Floor ± 2,000

**RENT** \$4.75 - \$6.00/SF FSG

**TERM** 3 - 5 Years

**OCCUPANCY** Immediately

**PARKING** 10 Parking Spaces in Adjacent City Lot at Prevailing Rates (\$175 - \$225)

**FEATURES**

- Outdoor Patio
- Ocean Views
- Hardwood Floors
- Abundant Natural Light
- Exposed Brick
- Immediate walking distance to a variety of amenities including Third Street promenade, Santa Monica Place and the Santa Monica Pier.

**CONTACT**

<b>Spencer Horak   Associate</b> 310.899.2728 shorak@leewestla.com AGT DRE 01921906	<b>Richard Abbitt   Principal</b> 310.899.2746 richard@leewestla.com BKR DRE 00826316
<b>Ryan Shuler   Principal</b> 310.899.2715 rshuler@leewestla.com AGT DRE 01987799	



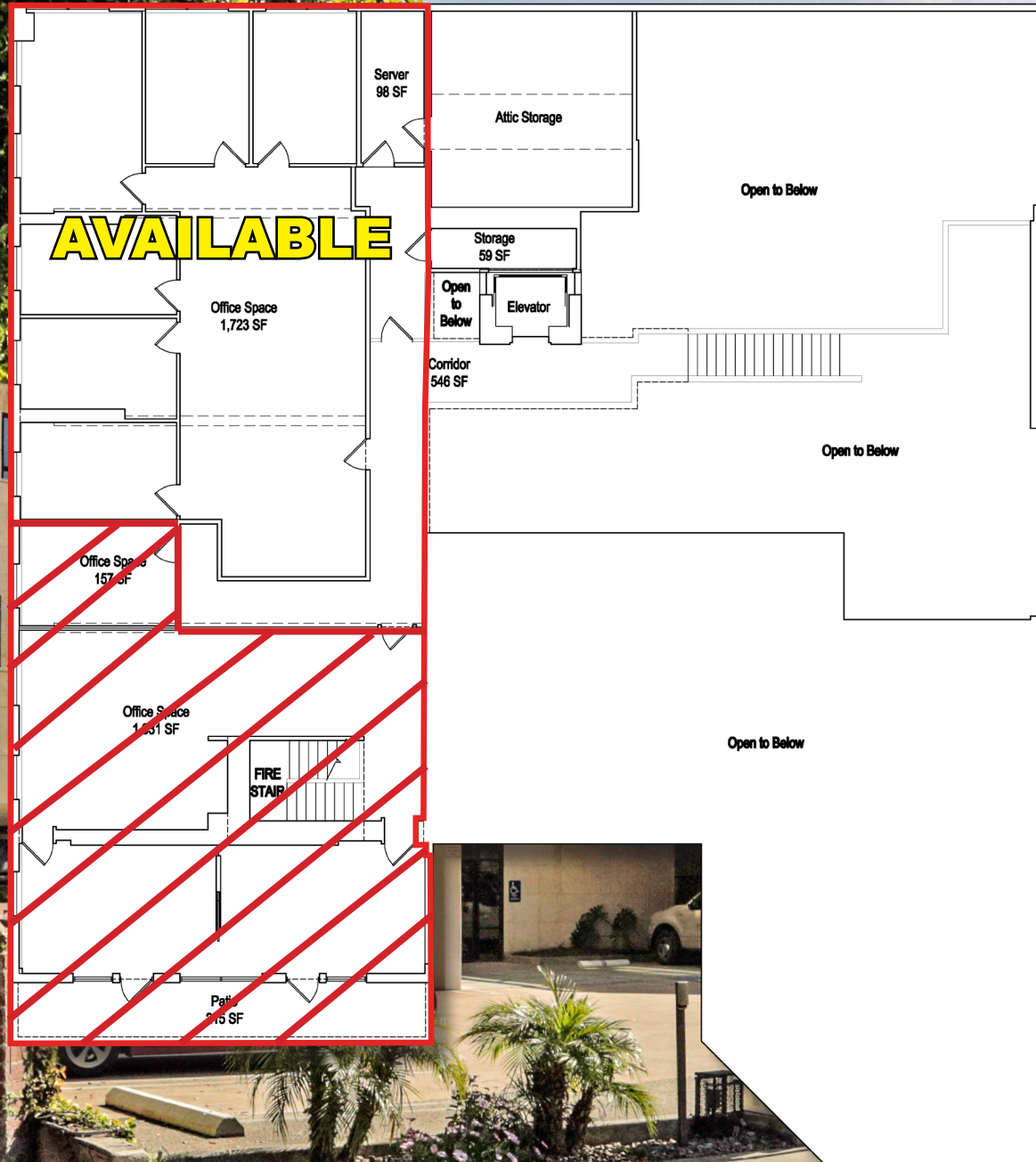
1508 17th Street, Santa Monica, CA  
310.899.2700 | WWW.LEEWESTLA.COM



LWLA

A DIVISION OF  
LEE & ASSOCIATES

# FLOOR PLAN



A DIVISION OF  
**LEE & ASSOCIATES**



SANTA MONICA PLACE

THIRD STREET PROMENADE



A DIVISION OF



**Spencer Horak | Associate**

310.899.2728

shorak@leewestla.com

AGT DRE 01921906

**Richard Abbitt | Principal**

310.899.2746

richard@leewestla.com

BKR DRE 00826316

**Ryan Shuler | Principal**

310.899.2715

rshuler@leewestla.com

AGT DRE 01987799

No warranty or representation is made to the accuracy of the foregoing information. Terms of sale or lease are subject to change or withdrawal without notice.