

# BROOKHOLLOW BUSINESS PARK

23091-23121 ANTONIO PARKWAY, RANCHO SANTA MARGARITA

## EXCLUSIVELY LISTED BY

**BJ FELL**  
License ID# 01929179  
949.790.3144  
bfell@leeirvine.com

**MARK JERUE**  
License ID# 01073399  
949.790.3121  
mjerue@leeirvine.com

**CRAIG FITTERER**  
License ID# 01246929  
949.790.3123  
cfitterer@leeirvine.com

## PROPERTY FEATURES

- ±46,284 SF High Image Business Park
- 3.1:1000 Parking Ratio
- 14' Clear Height
- Ground Level Loading
- Fully Automated Sprinkler System
- 100 Amps, 120/208 Volt, 3 Phase Power
- Easy access to the 241 Toll Road
- Close Proximity to Retail Amenities



No warranty or representation is made to the accuracy of the foregoing information. Terms of sale or lease and availability are subject to change or withdrawal without notice.

# BROOKHOLLOW BUSINESS PARK

23091-23121 ANTONIO PARKWAY, RANCHO SANTA MARGARITA



## PROJECT AVAILABILITY

BUILDING	SUITE	TOTAL SF	OFFICE SF	RATE	AVAILABLE
23121 Antonio	135	1,830	986	\$1.40 NNN	Now



EXCLUSIVELY LISTED BY

**BJ FELL**  
 Vice President  
 License ID# 01929179  
 949.790.3144  
 bfell@leeirvine.com

**MARK JERUE**  
 Senior Vice President  
 License ID# 01073399  
 949.790.3121  
 mjerue@leeirvine.com

**CRAIG FITTERER**  
 Senior Vice President  
 License ID# 01246929  
 949.790.3123  
 cfitterer@leeirvine.com



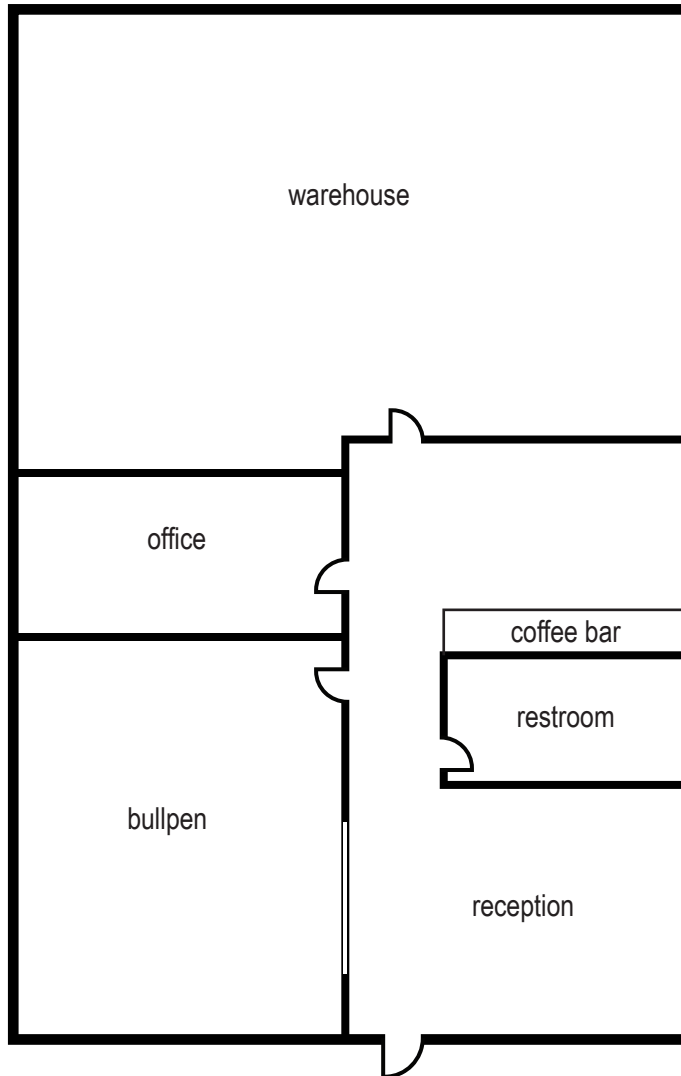
COMMERCIAL REAL ESTATE SERVICES

No warranty or representation is made to the accuracy of the foregoing information. Terms of sale or lease and availability are subject to change or withdrawal without notice.

# BROOKHOLLOW BUSINESS PARK

23091-23121 ANTONIO PARKWAY, RANCHO SANTA MARGARITA

FLOOR PLAN



23121 ANTONIO PARKWAY  
SUITE 135 | ±1,830 SF

- ±986 SF OF OFFICE SPACE
- \$1.40 NNN
- AVAILABLE NOW
- NETS \$0.41 PSF

