

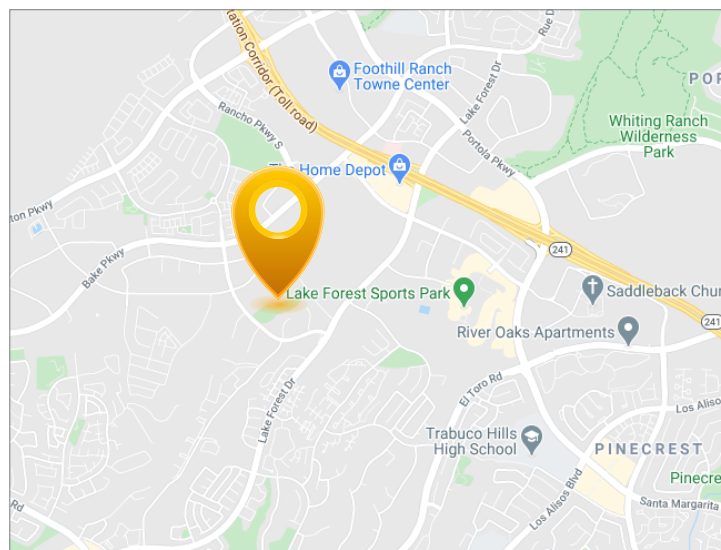
# ±3,270 SF HIGH IMAGE R&D CONDOMINIUM AVAILABLE FOR SALE

26228 ENTERPRISE COURT • LAKE FOREST, CA



## BUILDING FEATURES

- ±1,798 SQ FT of Single Story Office
- ±621 SF of Bonus 2nd Floor Office
- 3 Window Offices
- 2 Private Restrooms
- High Image R&D Building
- End Unit with 16' Warehouse Clearance
- 1 Ground Level Loading Door
- 3:1,000 Parking Ratio
- 200 amps



**BJ Fell**  
CalBRE 01929179  
949.790.3144  
bfell@leeirvine.com

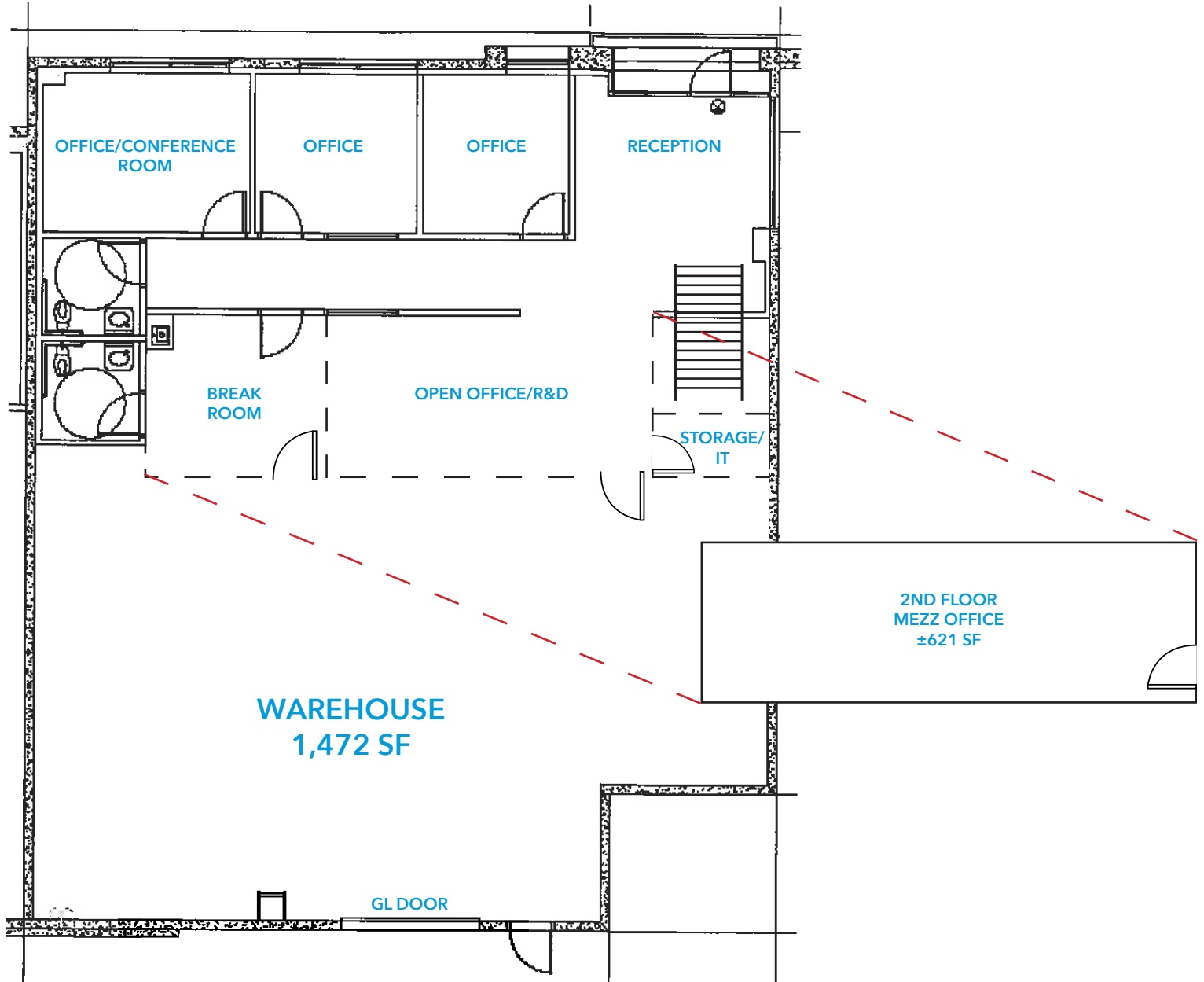
**Mark Jerue**  
CalBRE 01073399  
949.790.3121  
mjerue@leeirvine.com

**Craig Fitterer**  
CalBRE 01246929  
949.790.3123  
cfitterer@leeirvine.com

All information furnished regarding property for sale, rental or financing is from sources deemed reliable, but no warranty or representation is made to the accuracy thereof and same is submitted to errors, omissions, change of price, rental or other conditions prior to sale, lease or financing or withdrawal without notice. No liability of any kind is to be imposed on the broker herein.

**±3,270 SF HIGH IMAGE R&D CONDOMINIUM  
AVAILABLE FOR SALE**

**26228 ENTERPRISE COURT • LAKE FOREST, CA**



**BJ Fell**  
CalBRE 01929179  
949.790.3144  
bfell@leeirvine.com

**Mark Jerue**  
CalBRE 01073399  
949.790.3121  
mjerue@leeirvine.com

**Craig Fitterer**  
CalBRE 01246929  
949.790.3123  
cfitterer@leeirvine.com

All information furnished regarding property for sale, rental or financing is from sources deemed reliable, but no warranty or representation is made to the accuracy thereof and same is submitted to errors, omissions, change of price, rental or other conditions prior to sale, lease or financing or withdrawal without notice. No liability of any kind is to be imposed on the broker herein.