



23141 MOULTON PARKWAY | LAGUNA HILLS

# For Lease

TURN KEY MEDICAL OR DENTAL SUITE



- Suite 212-B: ±1,113 Square Feet
- Brand new turn key high image dental suite available
- Partially furnished dental office available
- Brand new tenant improvements complete
- Redeveloped medical office building
- Easy access to major freeways
- Close to the Irvine Spectrum, Laguna Hills Mall (Five Lagnas) and Lake Forest Gateway
- Centrally located to major medical providers (Hoag Hospital, Kaiser Permanente and Saddleback Memorial)
- Available now
- Asking \$2.35 NNN (Nets: \$0.48)

## contact

ALLEN BASSO  
Senior Vice President  
CaDRE 01298152  
949.790.3130  
abasso@leeirvine.com

ERIC DARNELL  
Vice President  
CaDRE 01888743  
949.790.3157  
edarnell@leeirvine.com

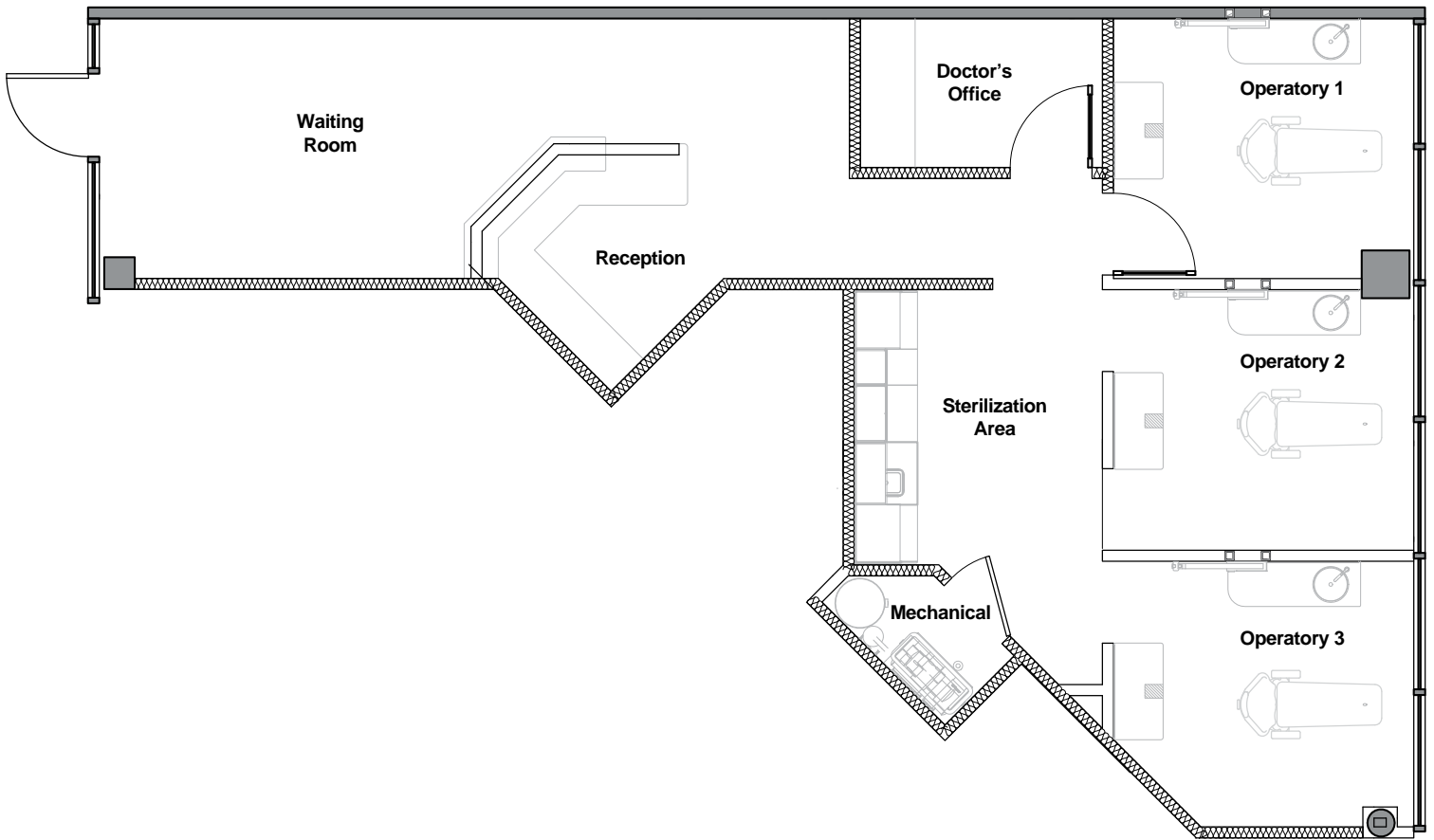
23141 MOULTON PARKWAY | LAGUNA HILLS



# For Lease

TURN KEY MEDICAL OR DENTAL SUITE

## Current Layout



## contact

ALLEN BASSO  
Senior Vice President  
CaDRE 01298152  
949.790.3130  
abasso@leeirvine.com

ERIC DARNELL  
Vice President  
CaDRE 01888743  
949.790.3157  
edarnell@leeirvine.com

23141 MOULTON PARKWAY | LAGUNA HILLS

# For Lease

TURN KEY MEDICAL OR DENTAL SUITE



FORMAL RECEPTION



TURN KEY DENTAL

## contact

ALLEN BASSO  
Senior Vice President  
CalDRE 01298152  
949.790.3130  
abasso@leeirvine.com

ERIC DARNELL  
Vice President  
CalDRE 01888743  
949.790.3157  
edarnell@leeirvine.com

23141 MOULTON PARKWAY | LAGUNA HILLS

# For Lease

TURN KEY MEDICAL OR DENTAL SUITE



## contact

ALLEN BASSO  
Senior Vice President  
CaDRE 01298152  
949.790.3130  
abasso@leeirvine.com

ERIC DARNELL  
Vice President  
CaDRE 01888743  
949.790.3157  
edarnell@leeirvine.com