

# FOR LEASE

## 24800 CHRISANTA DRIVE, SUITE 200

Mission Viejo, CA 92691



OFFICE PARK SIGNAGE



COURTYARD

### PROPERTY HIGHLIGHTS

- Perfect sized shared office spaces available
- Access to reception area, large window conference room, and kitchen with break area
- Complimentary refreshments
- Free WiFi
- Window offices with lots of natural light
- Common area courtyard with water feature
- Walk to retail amenities (Starbucks, ATM, TK Burger, etc.)
- 2 free legal referrals to attorneys per month
- Immediate access to major freeways
- High image office building
- Available now

### CONTACT



**Eric Darnell**  
Senior Associate  
License ID# 01888743  
949.790.3157  
edarnell@leeirvine.com



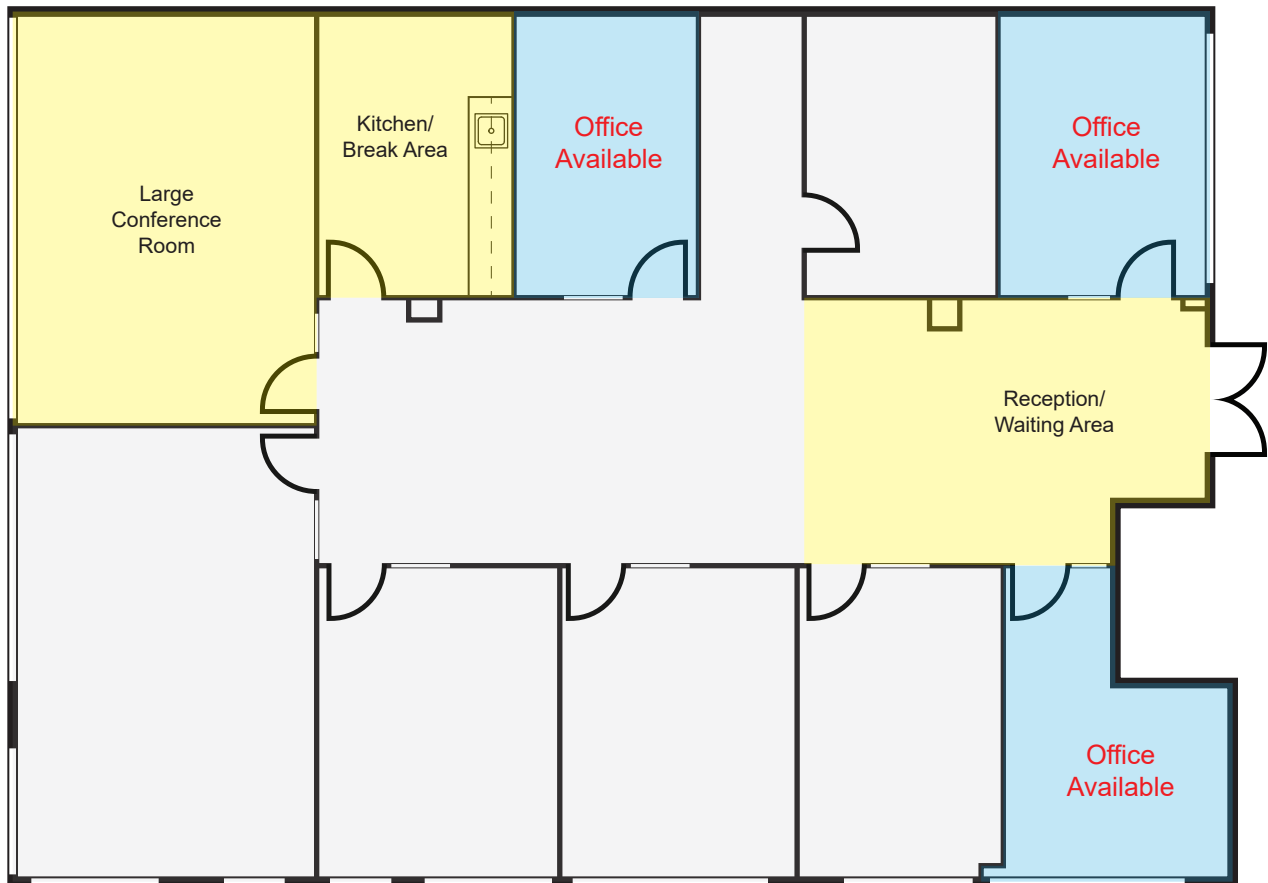
COMMERCIAL REAL ESTATE SERVICES  
No warranty or representation is made to the accuracy of the foregoing information. Terms of sale or lease and availability are subject to change or withdrawal without notice.

# FOR LEASE

## 24800 CHRISANTA DRIVE, SUITE 200

Mission Viejo, CA 92691

### Floor Plan



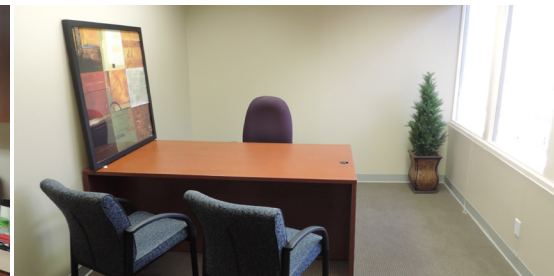
 Available     Shared Common Area     Leased



LARGE EXECUTIVE OFFICE



BREAK AREA WITH COFFEE & REFRESHMENTS



PRIVATE WINDOW OFFICE

## CONTACT



**Eric Darnell**  
Senior Associate  
License ID# 01888743  
949.790.3157  
edarnell@leeirvine.com



COMMERCIAL REAL ESTATE SERVICES

No warranty or representation is made to the accuracy of the foregoing information. Terms of sale or lease and availability are subject to change or withdrawal without notice.

# FOR LEASE

## 24800 CHRISANTA DRIVE, SUITE 200

Mission Viejo, CA 92691

### Aerial Map



### CONTACT



**Eric Darnell**  
Senior Associate  
License ID# 01888743  
949.790.3157  
edarnell@leeirvine.com



COMMERCIAL REAL ESTATE SERVICES

No warranty or representation is made to the accuracy of the foregoing information. Terms of sale or lease and availability are subject to change or withdrawal without notice.