

±900 SF FOR LEASE

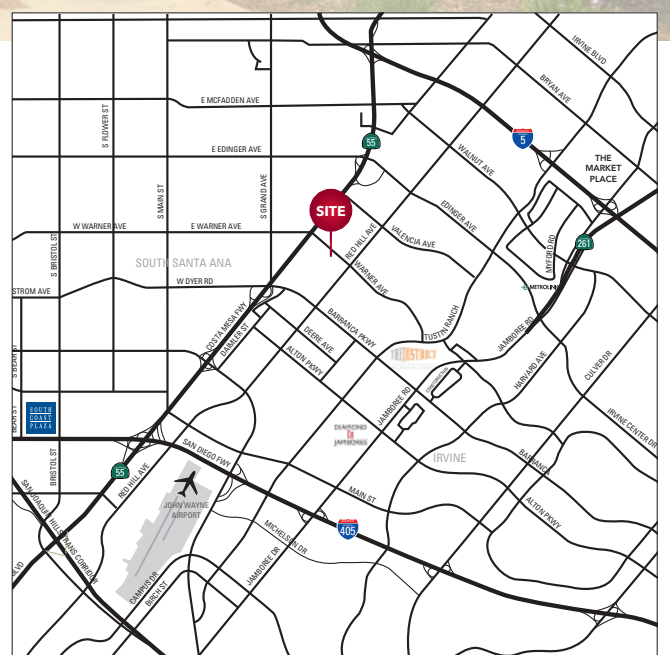
SIRCO IRVINE BUSINESS PARK

1900 WARNER AVENUE, UNIT L | SANTA ANA, CA



BUILDING FEATURES

- » Located in the Irvine Business Complex
- » Immediate 55, 405 and 5 Freeway Access
- » Only Minutes to OC Airport
- » Minutes to Tustin Legacy Development
- » Adjacent to the Proposed Bowery Development
- » 100% HVAC/Drop Ceiling Area
- » Open Floor Plan with One Private Office
- » Private Restroom
- » Immediate Occupancy Available
- » Call to Arrange a Showing

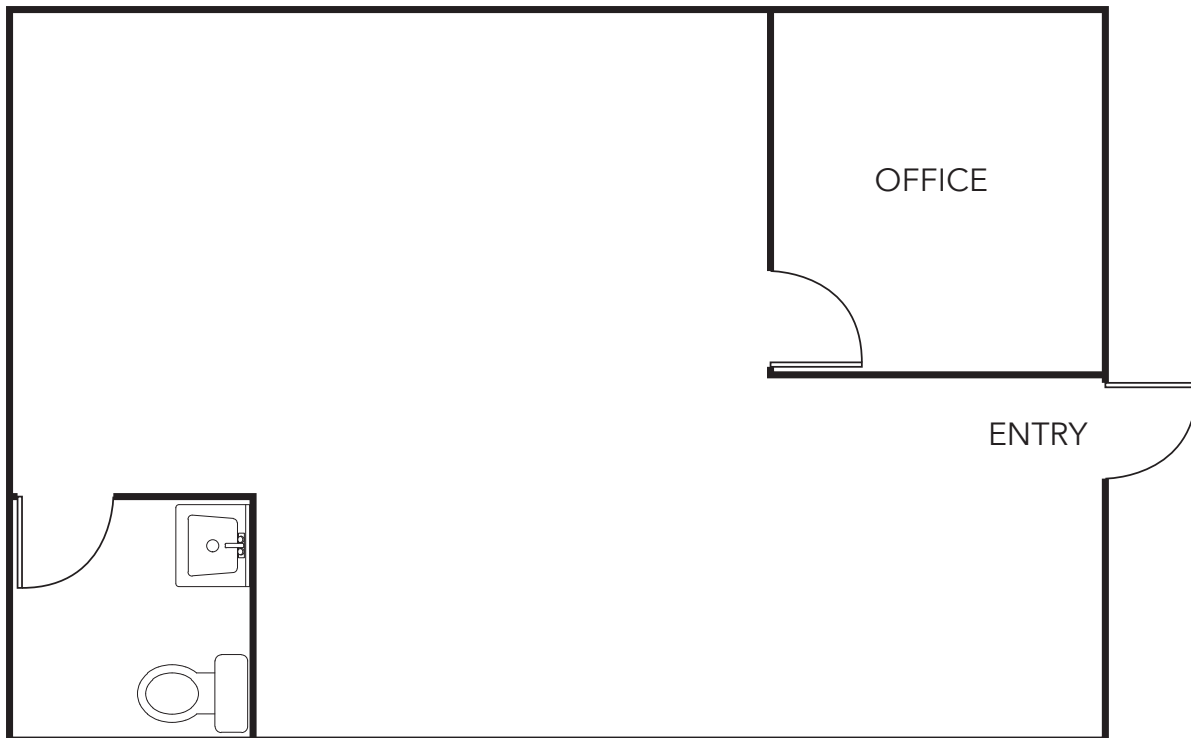
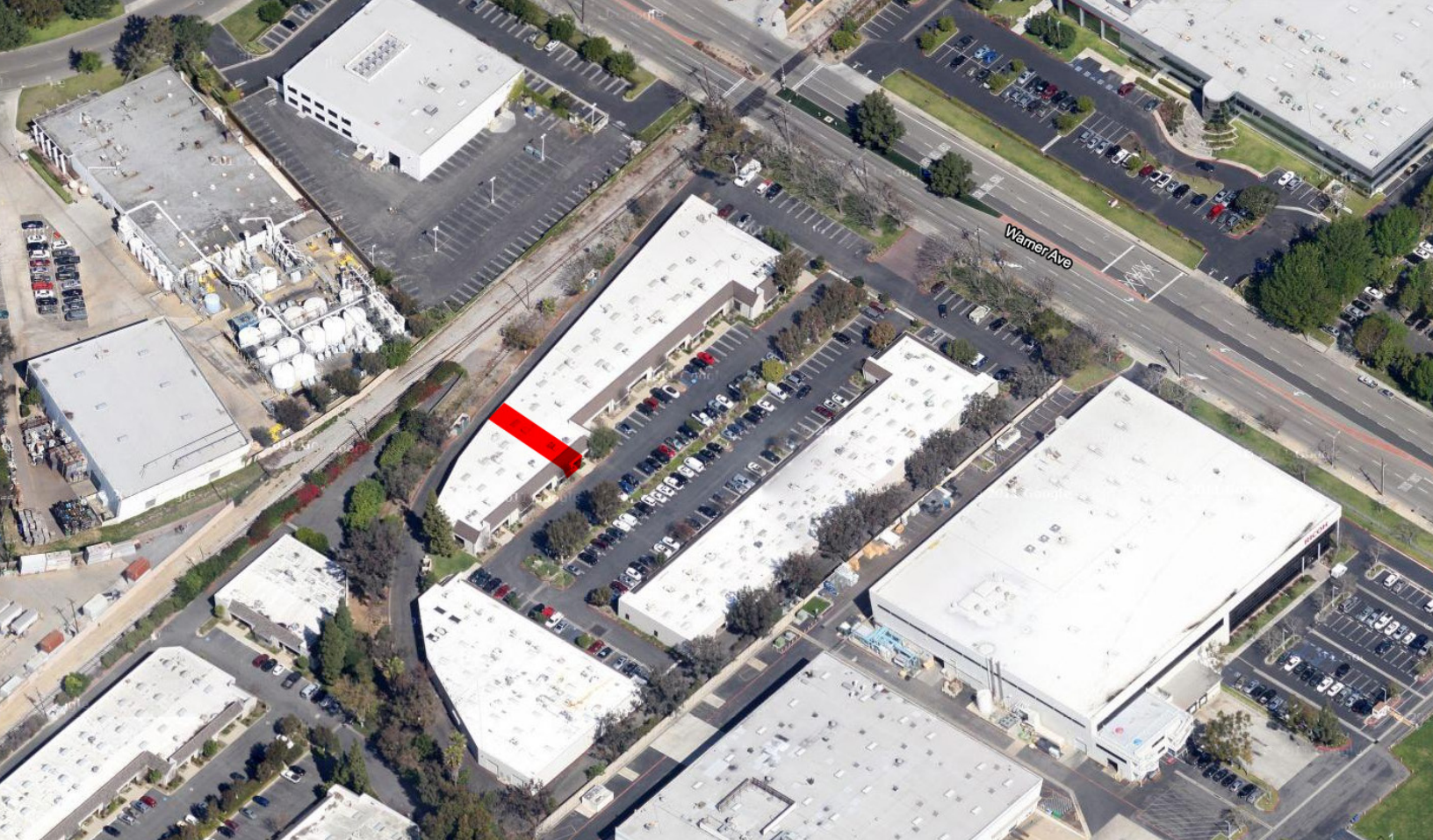


CONTACT ME

TIM ARGUELLO
949.724.4750 (Direct)
714.264.0135 (Cell)
targuello@lee-associates.com
DRE #: 01055859



DISCLAIMER: The information contained herein has been obtained from the property owner or other third party and is provided to you without verification as to accuracy. We (Lee & Associates, its brokers, employees, agents, principals, officers, directors and affiliates) make no warranty or representation regarding the information, property, or transaction. You and your attorneys, advisors and consultants should conduct your own investigation of the property and transaction.



CONTACT ME

TIM ARGUELLO
949.724.4750 (Direct)
714.264.0135 (Cell)
targuello@lee-associates.com
DRE #: 01055859

**LEE &
ASSOCIATES**
NEWPORT BEACH

DISCLAIMER: The information contained herein has been obtained from the property owner or other third party and is provided to you without verification as to accuracy. We (Lee & Associates, its brokers, employees, agents, principals, officers, directors and affiliates) make no warranty or representation regarding the information, property, or transaction. You and your attorneys, advisors and consultants should conduct your own investigation of the property and transaction.