



**CREATIVE OFFICE CAMPUS IN SILVER LAKE FOR LEASE
NEWLY RENOVATED (2019)**

2400 - 2410 HYPERION AVENUE, LOS ANGELES, CA 90027

PREMISES

Ground Floor ± 2,513 SF

RENT

\$3.05/SF NNN (\$1.06/SF Nets)

TERM

5 - 10 Years

OCCUPANCY

April 1, 2020

PARKING

\$100 Per Space

CROSS STREET

Tracy St.

WALK SCORE

Very Walkable (77)

FEATURES

- Very Rare Silver Lake Creative Office Space
- Reception, Four (4) Offices, One (1) Conference Room, Bullpen, Kitchen, Two (2) Bathrooms, and Storage
- Walking Distance to Many Restaurants and Amenities
- Minutes to Sunset Junction

CONTACT

Paul Brehme

310.899.2755

pbrehme@leewestla.com

AGT DRE 01476686

Caitlyn Ross

213.239.6339

caitlyn.ross@am.jll.com

AGT DRE 01892435



1508 17th Street, Santa Monica, CA 90404

310.899.2700 | www.leewestla.com | dre 01222000

515 S. Flower St., Ste. 1300, Los Angeles, CA 90071

213.239.6000 | www.us.jll.com | dre 01856260

No warranty or representation is made to the accuracy of the foregoing information. Terms of sale or lease are subject to change or withdrawal without notice.



**2400 - 2410 HYPERION AVENUE
LOS ANGELES, CA 90027**





Space Renderings

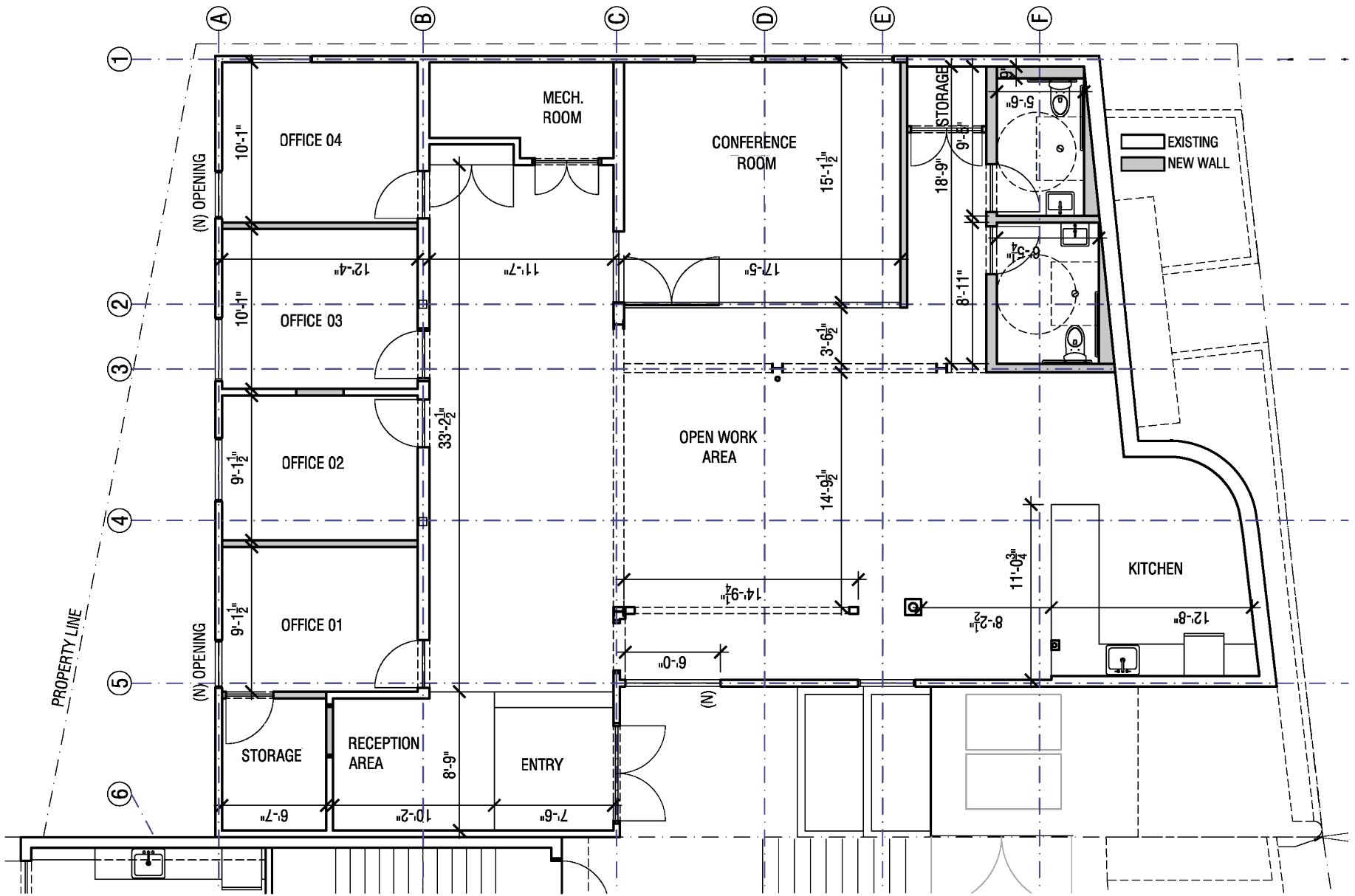


A DIVISION OF



LEE &
ASSOCIATES





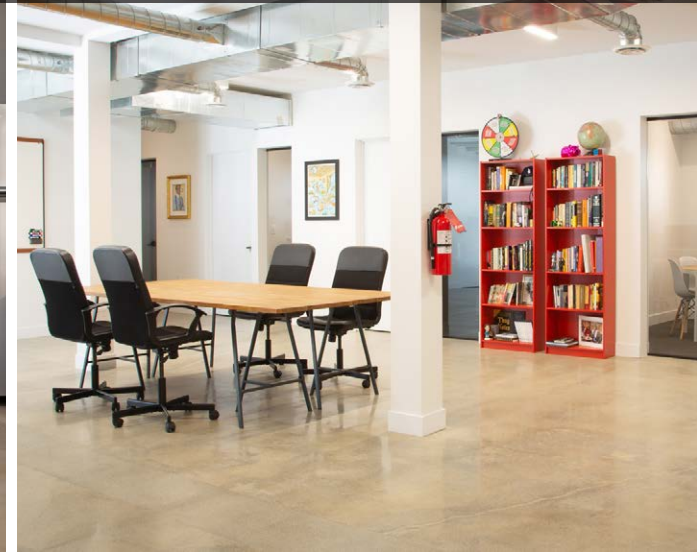
A DIVISION OF



FLOOR PLAN



Not actual space but examples of other finished space in building.



A DIVISION OF



Not actual space but examples of other finished space in building.





A DIVISION OF
LEE & ASSOCIATES

AERIAL VIEW





A DIVISION OF
LEE & ASSOCIATES

**SILVERLAKE
 NEARBY AMENITIES**

