

# AVAILABLE FOR SUBLEASE

DEERFIELD MEDICAL CENTER

4968 BOOTH CIR, SUITE 110 • IRVINE, CA

YOUR NAME HERE!!



Low  
Center

MONDAY-FRIDAY  
8:30AM - 5:00PM  
TUESDAY-THURSDAY  
1:00PM - 5:00PM  
(949) 559-5130

 **LEE &  
ASSOCIATES**  
COMMERCIAL REAL ESTATE SERVICES

**ALLEN BASSO**  
Senior Vice President  
CalDRE 01298152  
949.790.3130  
abasso@leeirvine.com

**ERIC DARNELL**  
Vice President  
CalDRE 01888743  
949.790.3157  
edarnell@leeirvine.com

# PROPERTY OVERVIEW



BREAK ROOM

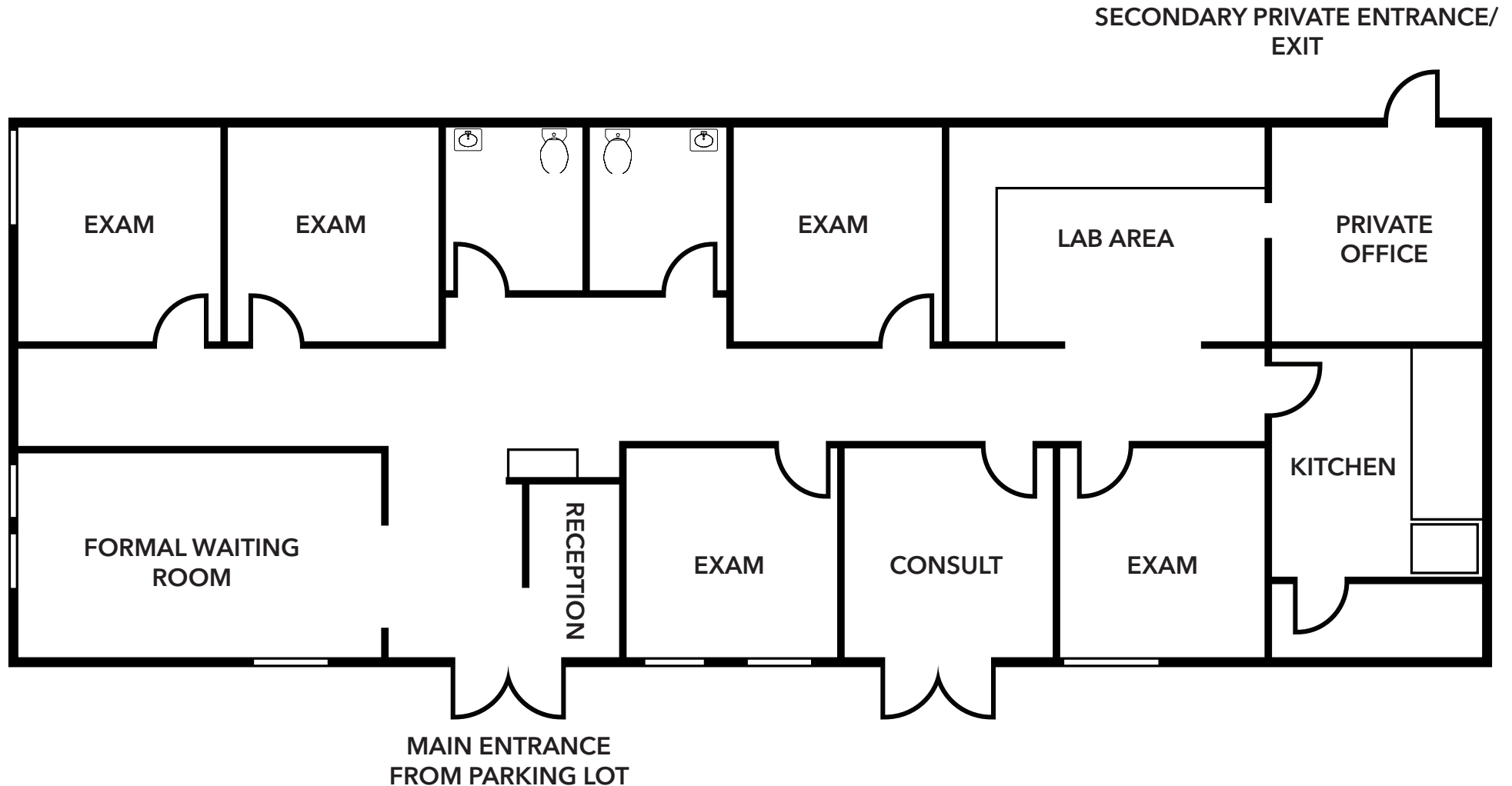


## PROPERTY HIGHLIGHTS

- PROMINENT MEDICAL LOCATION WITH GREAT EXTERIOR SIGNAGE
- BUILDING TOP SIGNAGE AND ONE ON IRVINE CENTER DRIVE
- EASY 405, 5 AND 133 FREEWAY ACCESS
- ±2,434 SF SUITE 110 AVAILABLE
- 5 EXAM ROOMS, KITCHEN, PRIVATE OFFICE, LAB, 2 RESTROOMS, RECEPTION AND WAITING AREA
- PERFECT FOR PROFESSIONAL MEDICAL GROUP LOOKING FOR GREAT EXPOSURE
- PROFESSIONALLY MANAGED AND MAINTAINED
- GREAT LOCATION NEAR ESTABLISHED RESIDENTIAL NEIGHBORHOOD
- 5.6:1 FREE SURFACE PARKING
- \$2.95 MG (UTILITIES AND JANITORIAL NOT INCLUDED)
- SUBLEASE EXPIRES JANUARY 31, 2024
- AVAILABLE MAY 1, 2020, POSSIBLY SOONER

# FLOOR PLAN

SUITE 110 ±2,434 SF



4968 BOOTH CIRCLE | IRVINE, CA

orange county  
OFFICE | GROUP

LEE &  
ASSOCIATES

ALLEN BASSO  
Senior Vice President  
CalDRE 01298152  
949.790.3130  
abasso@leeirvine.com

ERIC DARNELL  
Vice President  
CalDRE 01888743  
949.790.3157  
edarnell@leeirvine.com