

# 0.59 ACRES OF LAND **FOR SALE**

**14921 RAMONA BOULEVARD**

BALDWIN PARK, CALIFORNIA 91706

14921 RAMONA BOULEVARD | BALDWIN PARK, CALIFORNIA 91706

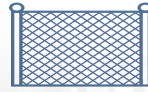
# PROPERTY HIGHLIGHTS



±0.59 ACRES  
(±25,784 SF)



±1,744 SF  
OFFICE BUILDING



PAVED &  
SECURED YARD



EXCELLENT  
CONTRACTORS YARD

**APN**

8437-017-011



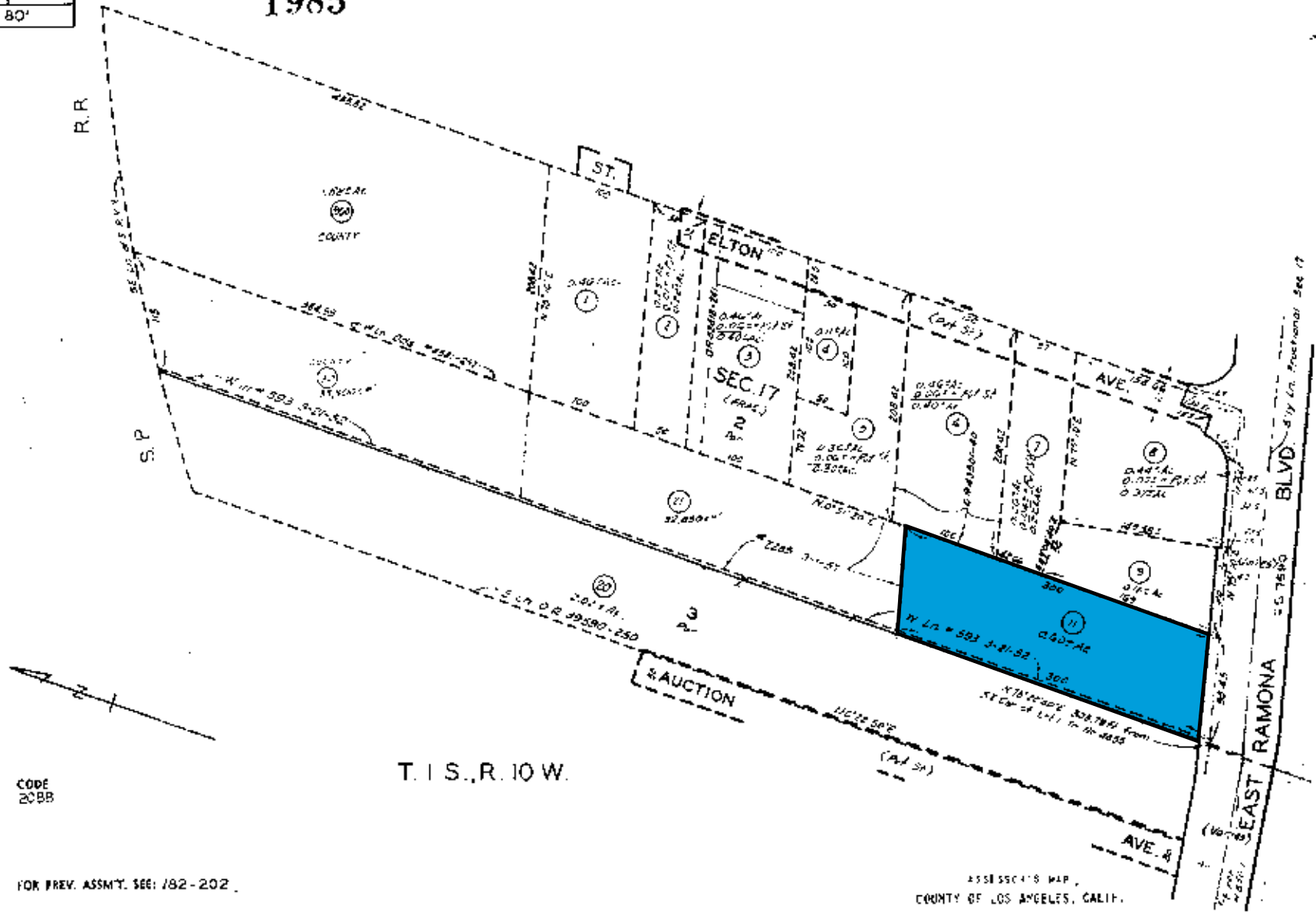
# PROPERTY PARCEL MAP

±0.59 ACRES OF LAND FOR SALE  
14921 RAMONA BOULEVARD | BALDWIN PARK, CALIFORNIA 91706

8437 | 17  
SCALE 1" = 80'

1985

REFILED  
3-8-83  
8-11-84  
6-19-85  
7-26-86  
10-13-88  
11-15-88



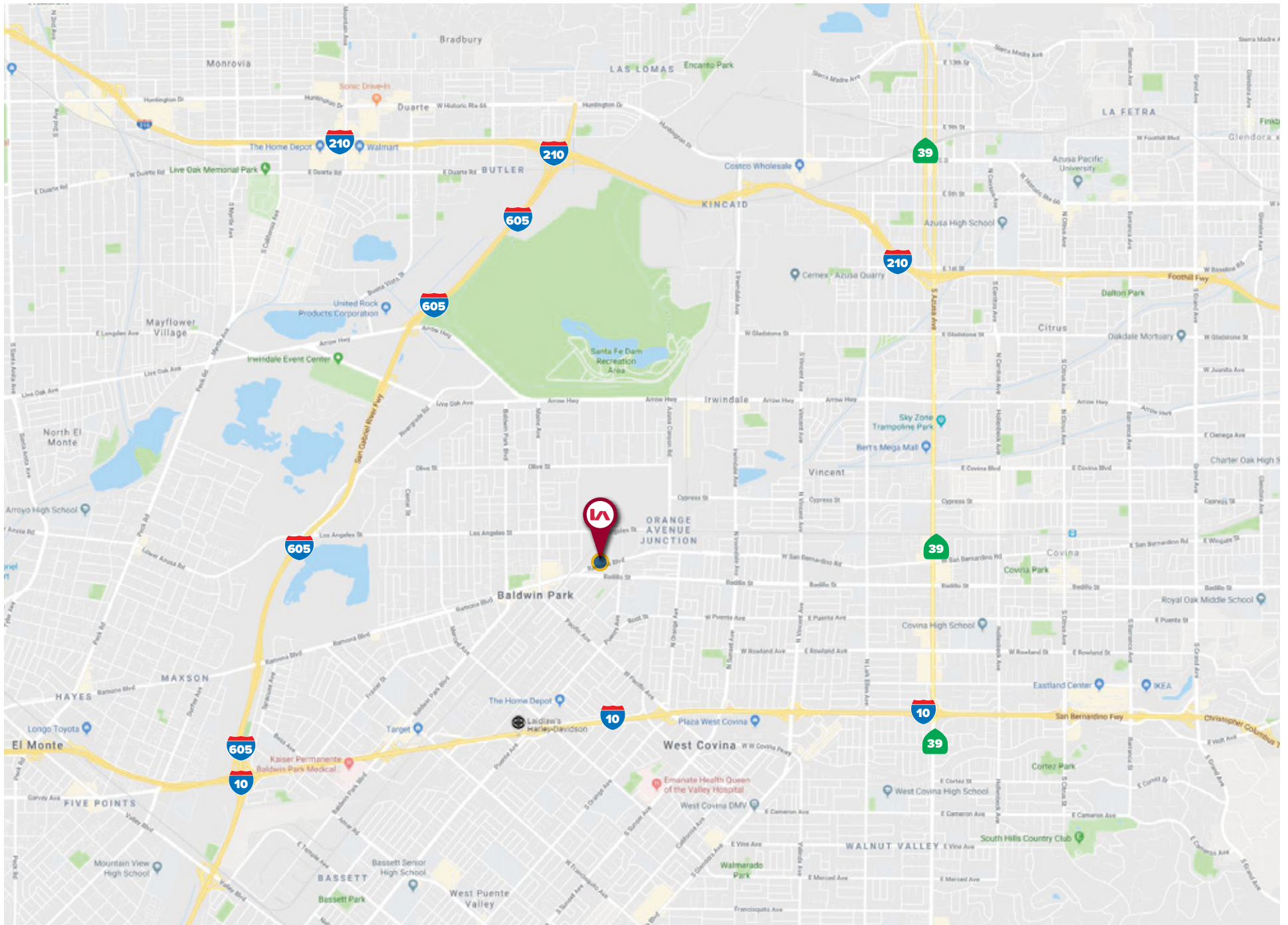
CODE  
2088

FOR PREV. ASSMT. SEE: 182-202

ASSESSOR'S MAP,  
COUNTY OF LOS ANGELES, CALIF.

# LOCATION MAP

±0.59 ACRES OF LAND FOR SALE  
14921 RAMONA BOULEVARD | BALDWIN PARK, CALIFORNIA 91706





# 0.59 ACRES OF LAND **FOR SALE**

**14901 RAMONA BOULEVARD**  
BALDWIN PARK, CALIFORNIA 91706

**EVAN JURGENSEN**

Associate  
LIC NO 01967347

[ejurgensen@lee-associates.com](mailto:ejurgensen@lee-associates.com)

323.767.2032