

17,824 SF INDUSTRIAL BUILDING **FOR LEASE**

1517 N ALAMEDA STREET
COMPTON, CALIFORNIA 90222



1517 N ALAMEDA STREET | COMPTON, CALIFORNIA 90222

PROPERTY HIGHLIGHTS



±300 SF
OFFICE



2 GROUND
LEVEL DOORS



CRANE SERVED



HEAVY POWER
ADDITIONAL POWER POSSIBLE
LESSEE TO VERIFY

1517 N ALAMEDA STREET | COMPTON, CALIFORNIA 90222

PROPERTY SPECIFICATIONS



AVAILABLE SIZE

±17,824 SF

OFFICE SIZE

±300 SF

RESTROOMS

1

CLEAR HEIGHT

20' - 30'

YEAR BUILT

1980

POWER

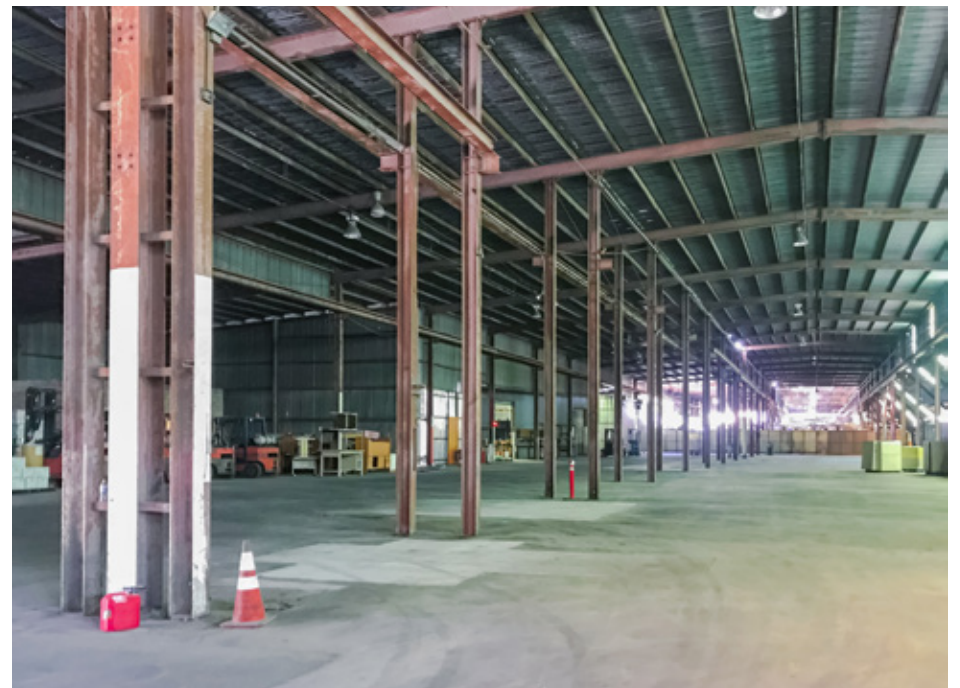
1200_A/480_V/3_Ø/4_W

ZONING

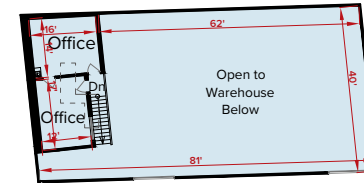
COMH

PARCEL NUMBER

6167-005-019







SECOND FLOOR
PART 2 - OFFICE: 605 SF



FIRST FLOOR
WAREHOUSE: 48,040 SF
OFFICE: 2,500 SF



NOTE: Drawing not to scale. All measurements and sizes are approximate.

PROPERTY PARCEL MAP

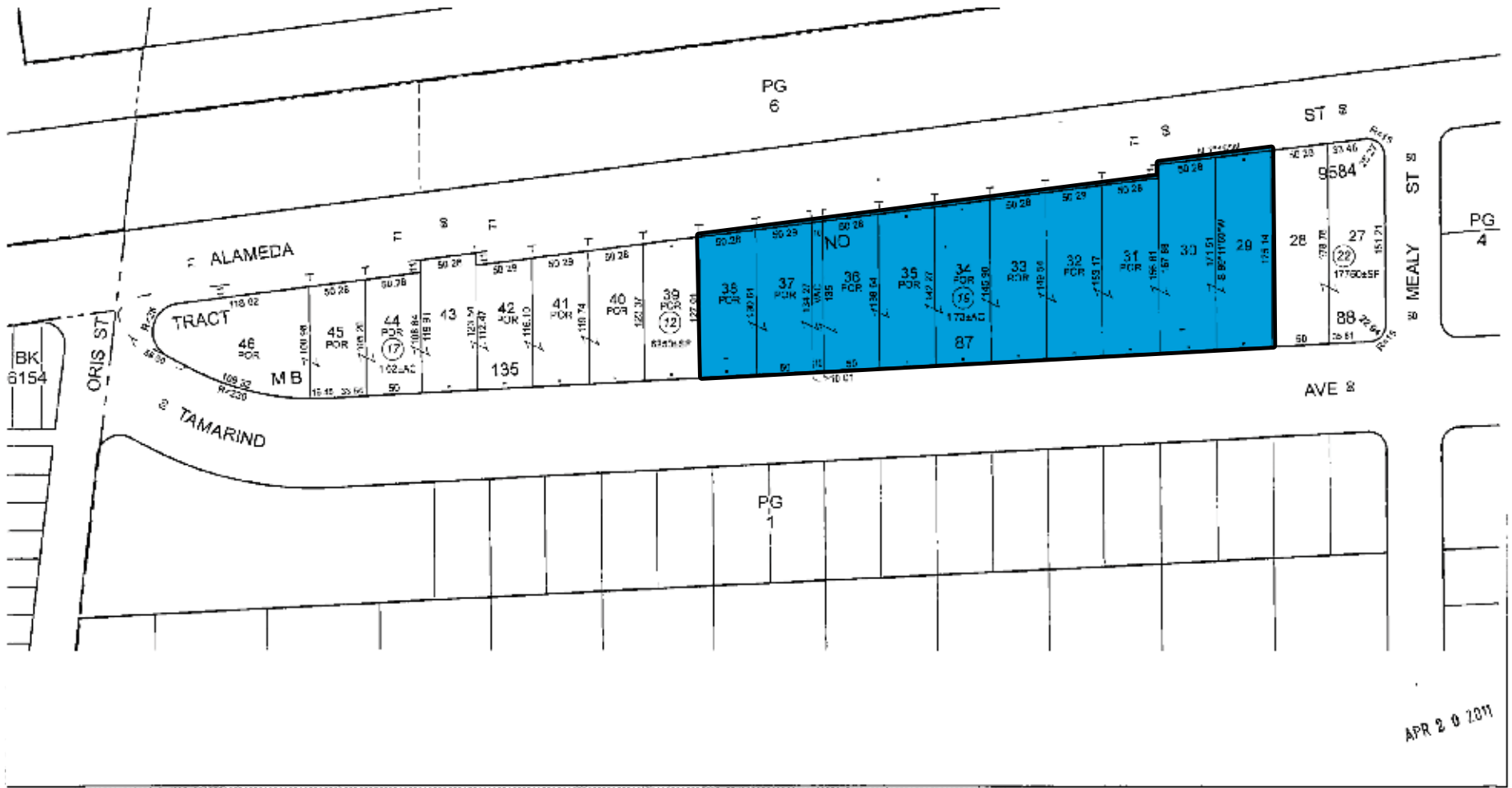
17,824 SF INDUSTRIAL BUILDING FOR LEASE
1517 N ALAMEDA STREET | COMPTON, CALIFORNIA 90222

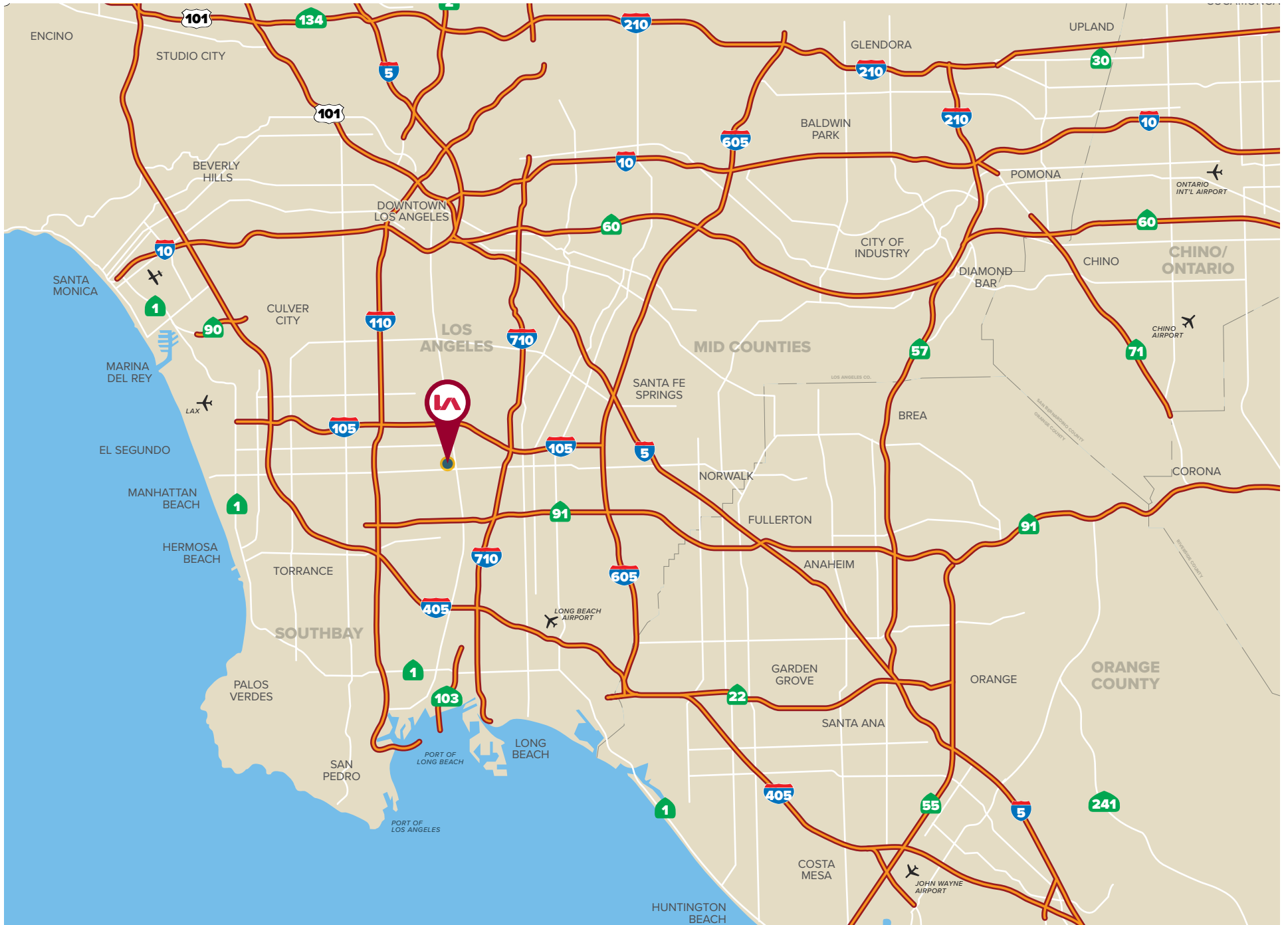
6167	5 SHEET	P.A. 435-17	TRA 11252	REVISED 2010051515337001-10 201004204000001-2P		SEARCH NO	OFFICE OF THE ASSESSOR COUNTY OF LOS ANGELES COPYRIGHT © 2002
------	---------	-------------	-----------	--	--	-----------	---



MAPPING AND GIS SERVICES
SCALE 1" = 81'

2012





17,824 SF INDUSTRIAL BUILDING **FOR LEASE**

1517 N ALAMEDA STREET
COMPTON, CALIFORNIA 90222

EVAN JURGENSEN

Associate
LIC NO 01967347

ejurgensen@lee-associates.com

323.767.2032

JACK R. CLINE, JR.

Senior Vice President, Principal
LIC NO 00854279

jcline@lee-associates.com

323.767.2025

DOUG CLINE

Senior Vice President, Principal
LIC NO 01142005

dcline@lee-associates.com

323.767.2116

GAVIN GILL

Associate
LIC NO 01936303

gavingill@lee-associates.com

323.767.2058