



FOR SALE OR SUBLEASE

A 17,746 Square Foot Freestanding Industrial Building

LARGE PRIVATE YARD!



20431 North Sea Circle, Lake Forest



Exclusive Agents:



COMMERCIAL REAL ESTATE SERVICES

9838 Research Drive
Irvine, California 92618

MARK JERUE
Senior Vice President
License ID# 01073399
(949) 790-3121
mjerue@leeirvine.com

CRAIG FITTERER
Senior Vice President
License ID# 01246929
(949) 790-3123
cfitterer@leeirvine.com



FOR SALE OR SUBLEASE

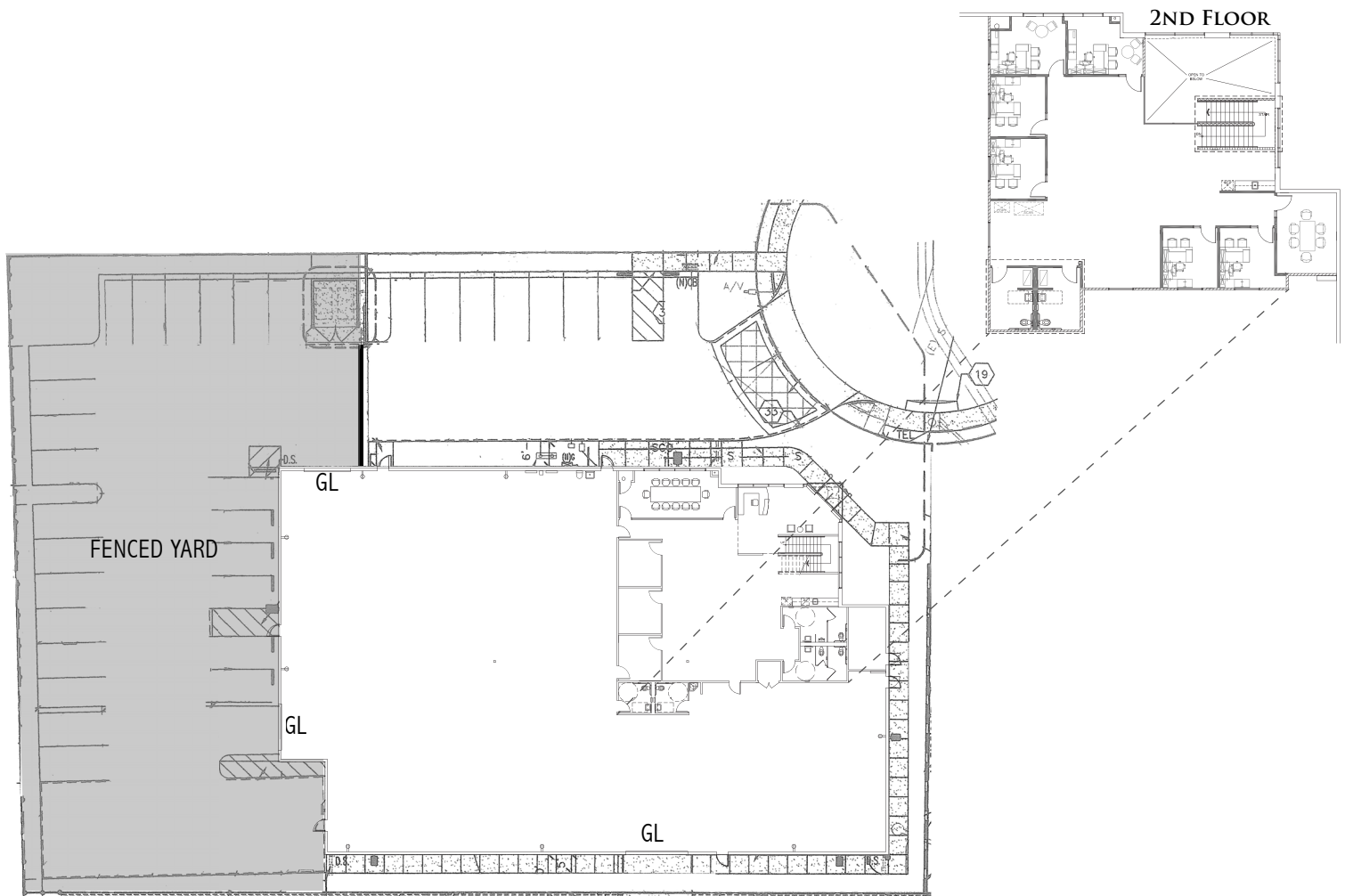
A 17,746 Square Foot Freestanding Industrial Building

Property Description at
20431 North Sea Circle, Lake Forest

20431 North Sea Circle is a first-class, 17,746 square foot two-story, 24 foot clear, industrial building located in the City of Lake Forest and minutes from the Santa Ana (5) and 241 Freeways.

PROPERTY FEATURES:

- 5,572 SF of High Image Office
- Large Gated Yard
- 32 Car Parking
- 24' Clearance
- 1,200 Amps, 3 Phase
- 3 Ground Level Doors
- Restrooms Upstairs & Downstairs and Warehouse with Shower
- Sublease thru 8/31/2026



COMMERCIAL REAL ESTATE SERVICES

No warranty or representation is made to the accuracy of the foregoing information. Terms of sale or lease and availability are subject to change or withdrawal without notice.

MARK JERUE
Senior Vice President
License ID# 01073399
(949) 790-3121
mjerue@leeirvine.com

CRAIG FITTERER
Senior Vice President
License ID# 01246929
(949) 790-3123
cfitterer@leeirvine.com