



# 1024

N ORANGE DR | SUITE 100 | LOS ANGELES

For further information please contact:

**Stacy Vierheilg-Fraser**

818.933.0313

[svierheilg@lee-re.com](mailto:svierheilg@lee-re.com)

DRE#00986794



**LEE &  
ASSOCIATES**

COMMERCIAL REAL ESTATE SERVICES

Lee & Associates® - LA North/Ventura, Inc.

*A Member of the Lee & Associates Group of Companies*

15250 Ventura Blvd, Suite 100

Sherman Oaks, CA 91403 • 818.986.9800

No warranty or representation is made to the accuracy of the foregoing information. Terms of sale or lease and availability are subject to change or withdrawal without notice. Corporate ID # 01191898

## SUBLEASE

- Building 1- Approximately 1,570 RSF
- Available Immediately Through January 13, 2022
- Base Rent: \$3.35 prsf, Fully Serviced subject to 3% annual increases
- Parking: Three (3) Reserved Spaces Free of Charge
- Furniture Available for Purchase



## BUILDING HIGHLIGHTS

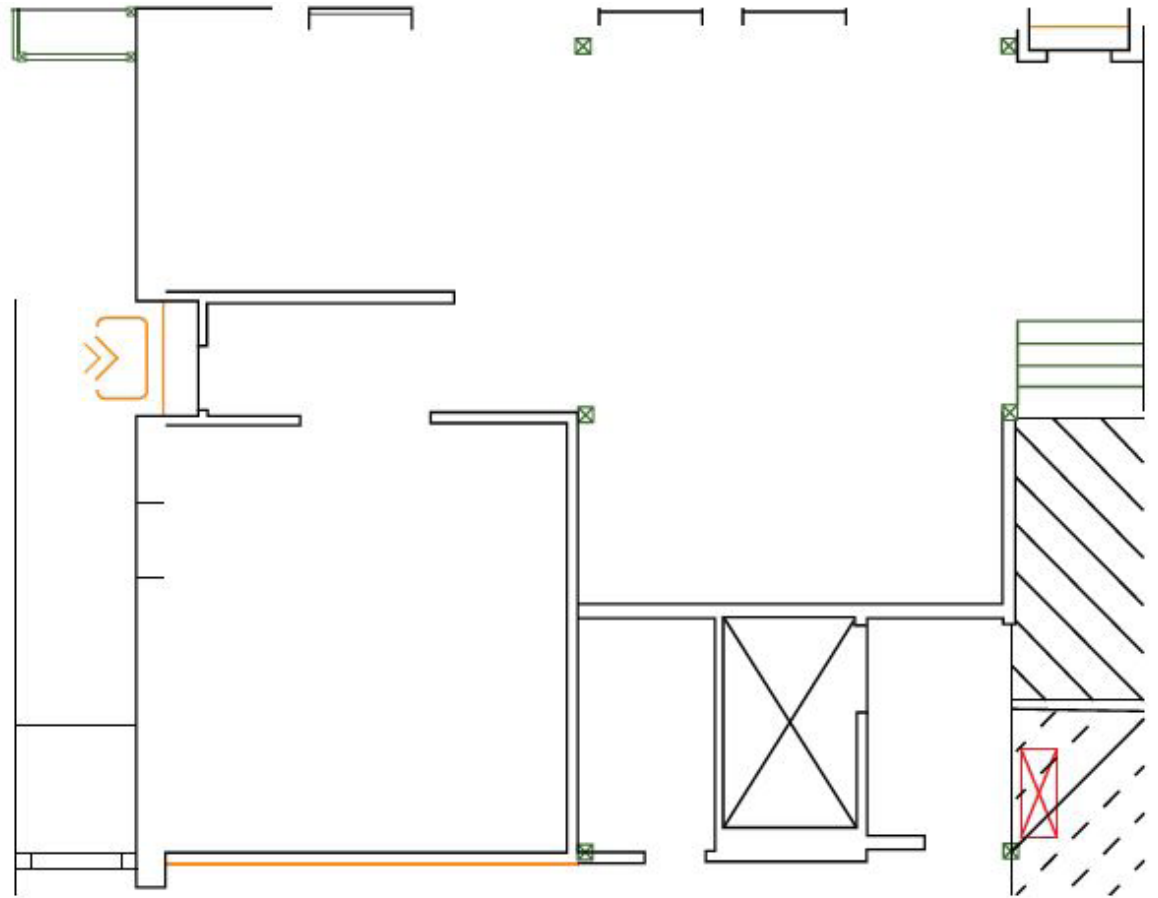
- High Ceilings
- Exposed Brick
- Creative Industrial
- Large Open Area
- Conference Room
- Secured Building



# 1024

N ORANGE DR | SUITE 100 | LOS ANGELES

## Floor Plan



**LEE &  
ASSOCIATES**

COMMERCIAL REAL ESTATE SERVICES

Lee & Associates® - LA North/Ventura, Inc.  
A Member of the Lee & Associates Group of Companies  
15250 Ventura Blvd, Suite 100  
Sherman Oaks, CA 91403 • 818.986.9800

No warranty or representation is made to the accuracy of the foregoing information.  
Terms of sale or lease and availability are subject to change or withdrawal without notice.  
Corporate ID # 01191898

Not To Scale

