

FOR LEASE

3080 Airway Avenue Costa Mesa CA 92626



HIGHLIGHTS

- ±78,738 SF Freestanding Industrial/R&D Building
- Creative Office
- Great Corporate Headquarters
- Prime Airport Area Location with Flexible Zoning
- 100% HVAC Climate Control
- Building Signage Available/Signage Towards Airport Tarmac
- Abundant Parking for Numerous Uses
- Fenced and Secured Lot

PROPERTY SPECIFICS

Market:	Orange County
Sub-Market:	Airport Area
Cross Street:	Airway Ave/Fischer Ave
Total Building SF:	±78,738 SF
Office Size:	Built to Suit
Primary Use:	Industrial Manufacturing/Warehouse
Year Built:	1973
Sprinkler:	Yes
Ceiling Height:	21'
Parking Ratio:	3.1:1000 / 237 Stalls
GL:	2
DH/Truck-level Doors:	2
Land Size:	±3.91 Acres

FOR MORE INFORMATION, CON-

PHIL COHEN

Senior Vice President
BRE #01156287
949.790.3160
pcohen@leeirvine.com

TODD SWANSON

Associate
BRE #01913420
949.790.3169
tswanson@leeirvine.com

APRIL FOSTER

Executive Assistant
949.790.3181
cohengroup@leeirvine.com

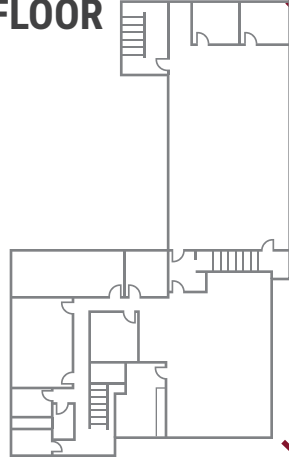
MANAGED BY:



FOR LEASE

3080 Airway Avenue Costa Mesa CA 92626

SECOND FLOOR



FIRST FLOOR



FOR MORE INFORMATION, CON-

PHIL COHEN

Senior Vice President
BRE #01156287
949.790.3160
pcohen@leeirvine.com

TODD SWANSON

Associate
BRE #01913420
949.790.3169
tswanson@leeirvine.com

APRIL FOSTER

Executive Assistant
949.790.3181
cohengroup@leeirvine.com

MANAGED BY:



No warranty or representation is made to the accuracy of the foregoing information. Terms of sale or lease and availability are subject to change or withdrawal without notice.

RENDERINGS

3080 Airway Avenue Costa Mesa CA 92626



PROPOSED SITE PLANS

3080 Airway Avenue Costa Mesa CA 92626



Existing Site & Parking Plan

Site Plan with Proposed Parking Structure

From 237 Existing Stalls to 307 with Parking Structure

