

FOR LEASE!

±32,107 SF FREESTANDING INDUSTRIAL BUILDING

[CLICK HERE VIEW VIDEO TOUR!](#)



ORANGE
COUNTY
INDUSTRIAL



20651

PRISM PLACE

LAKE FOREST, CALIFORNIA

PROPERTY FEATURES

- ±32,107 SF Freestanding Industrial Building
- ±7,500 SF of Office Space
- Move In Ready! Office Refurbishments Complete
- ±71,874 SF Parcel (1.65 AC)
- 2 Dock High Loading Doors
- 2 Ground Level Loading Doors
- 400 Amps (277/480v)
- Upgraded ESFR Sprinkler System
- 26' Warehouse Clearance
- Private Fenced Yard With Drive Around Access
- 2.1 : 1 Parking

FOR MORE INFORMATION, CONTACT:

DALE CAMERA
Senior Vice President
Lic #01313921
949 790 3132
dcamera@leeirvine.com

JASON HELMICK
Senior Vice President
Lic #01786729
949 790 3119
jhelmick@leeirvine.com

ZACH SCHWANER
Senior Associate
Lic #02009623
949 790 3159
zschwanner@leeirvine.com



LEE &
ASSOCIATES

COMMERCIAL REAL ESTATE SERVICES

No warranty or representation is made to the accuracy of the foregoing information. Terms of sale or lease and availability are subject to change or withdrawal without notice.

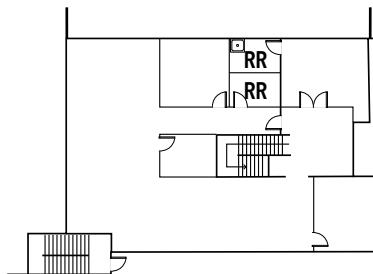
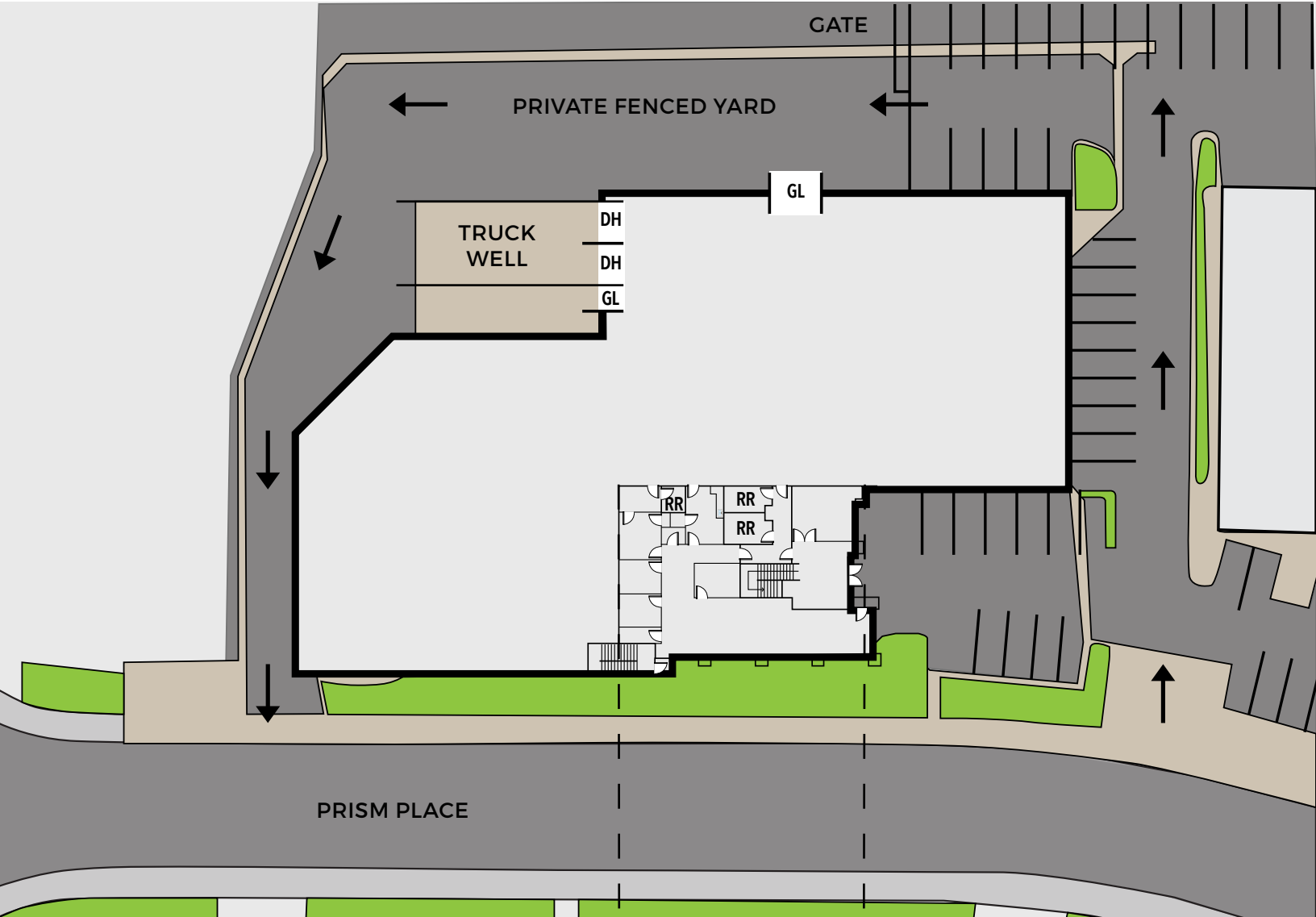
FOR LEASE!

±32,107 SF FREESTANDING INDUSTRIAL BUILDING

[CLICK HERE VIEW VIDEO TOUR!](#)

20651 PRISM PLACE

LAKE FOREST, CALIFORNIA



2ND STORY OFFICE

FOR MORE INFORMATION, CONTACT:

DALE CAMERA
Senior Vice President
Lic #01313921
949 790 3132
dcamera@leeirvine.com

JASON HELMICK
Senior Vice President
Lic #01786729
949 790 3119
jhelmick@leeirvine.com

ZACH SCHWANER
Senior Associate
Lic #02009623
949 790 3159
zschwanner@leeirvine.com

LEE & ASSOCIATES
COMMERCIAL REAL ESTATE SERVICES

ORANGE COUNTY INDUSTRIAL

No warranty or representation is made to the accuracy of the foregoing information. Terms of sale or lease and availability are subject to change or withdrawal without notice.

FOR LEASE!

±32,107 SF FREESTANDING INDUSTRIAL BUILDING

[CLICK HERE VIEW VIDEO TOUR!](#)

20651 PRISM PLACE

LAKE FOREST, CALIFORNIA



FOR LEASE!

±32,107 SF FREESTANDING INDUSTRIAL BUILDING

[CLICK HERE VIEW VIDEO TOUR!](#)

20651 PRISM PLACE

LAKE FOREST, CALIFORNIA



FOR MORE INFORMATION, CONTACT:

DALE CAMERA
Senior Vice President
Lic #01313921
949 790 3132
dcamera@leeirvine.com

JASON HELMICK
Senior Vice President
Lic #01786729
949 790 3119
jhelmick@leeirvine.com

ZACH SCHWANER
Senior Associate
Lic #02009623
949 790 3159
zschwanner@leeirvine.com

 **LEE & ASSOCIATES**
COMMERCIAL REAL ESTATE SERVICES

ORANGE COUNTY INDUSTRIAL

No warranty or representation is made to the accuracy of the foregoing information. Terms of sale or lease and availability are subject to change or withdrawal without notice.