

HIGH IMAGE TWO STORY FREESTANDING OFFICE BUILDING



FOR LEASE

THE PARK

25381 COMMERCENTRE DRIVE | LAKE FOREST | 5,188 SQUARE FEET | \$2.30 FULL SERVICE GROSS

KURT BRUGGEMAN
SENIOR VICE PRESIDENT
LICENSE ID# 01264501
949.790.3125
KBRUGGEMAN@LEEIRVINE.COM

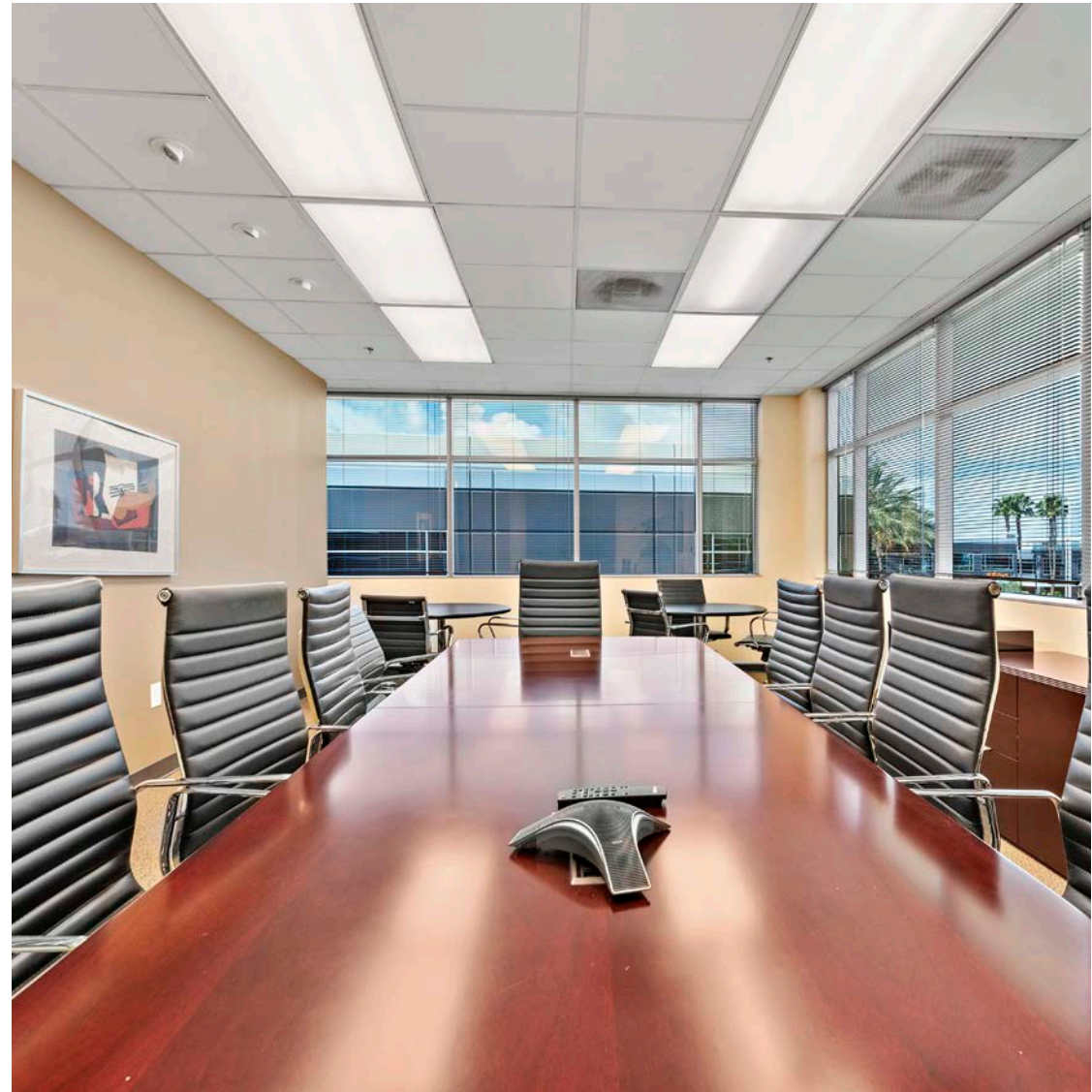
MATT FRYER
SENIOR VICE PRESIDENT
LICENSE ID# 01333079
949.790.3122
MFRYER@LEEIRVINE.COM

ADAM WICKER
SENIOR VICE PRESIDENT
LICENSE ID# 01225873
949.400.3973
AWICKER@LEEIRVINE.COM

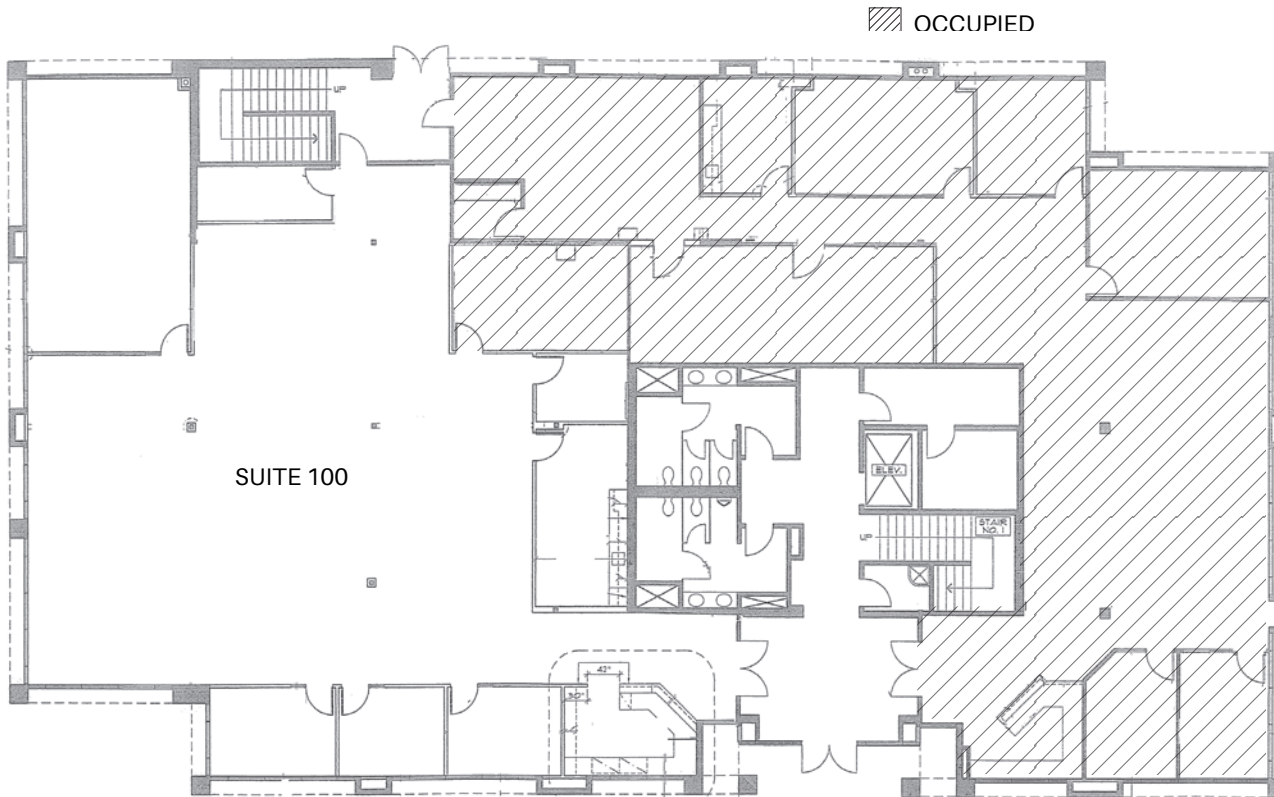
PROPERTY OVERVIEW

25381 COMMERCENTRE DRIVE | LAKE FOREST, CA

- Rare High Image Two Story Free Standing ±20,592 square foot elevator served owner/user office building located in the “heart” of South Orange County.
- Situated in a well-maintained professional office campus with attractive modern architecture, an abundance of surface parking, lush landscaping, breathtaking views of Saddleback Mountain range, & extensive window lines.
- Close proximity to some of South Orange County’s most affluent areas offering excellent regional access to high-end residential neighborhoods and a highly educated workforce in all directions.
- High profile location surrounded by an array of retail amenities & immediate access to Interstate 5 (I-5), San Diego (405) Freeway, Laguna Canyon (133) Highway & the Foothill Transportation Corridor (241).
- **LEASE RATE: \$2.30 Full Service Gross**



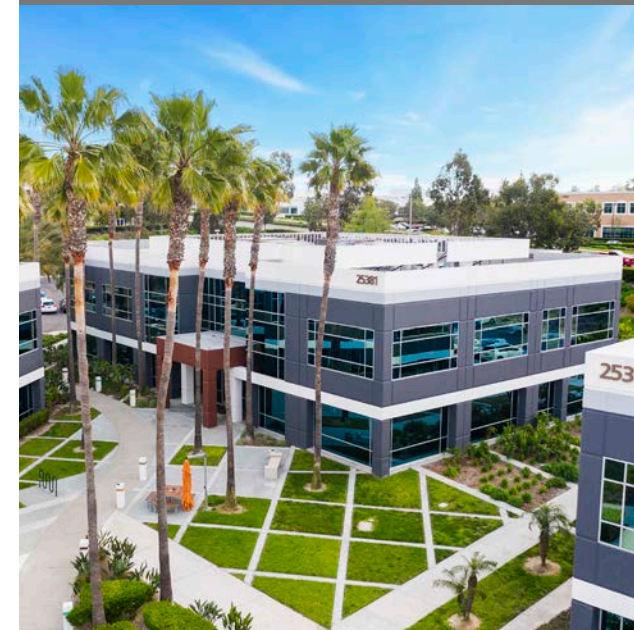
FIRST FLOOR PLAN



SUITE	SIZE	LEASE RATE	COMMENTS
100	5,188 SF	\$2.30 FSG	3 offices, conference room, reception, kitchen, storage, large open area and double door entry off of main lobby. Available immediately

25381
 COMMERCENTRE
 DRIVE

LAKE FOREST, CALIFORNIA



EXTERIOR IMAGES

25381 COMMERCENTRE DRIVE | LAKE FOREST, CA





25381
COMMERCENTRE

FOOTHILL PLAZA





COURTYARD
BY MARRIOTT

BAKER RANCH

FOOTHILL TOWNE CENTRE
















LAKE FORESTR

BAKER PKWY



PORTOLA PKWY

THE VILLAGE





25381 COMMERCENTRE DRIVE

LAKE FOREST, CALIFORNIA

