

CREATIVE OFFICE SPACE FOR LEASE

215 S. LA CIENEGA BLVD | BEVERLY HILLS, CA

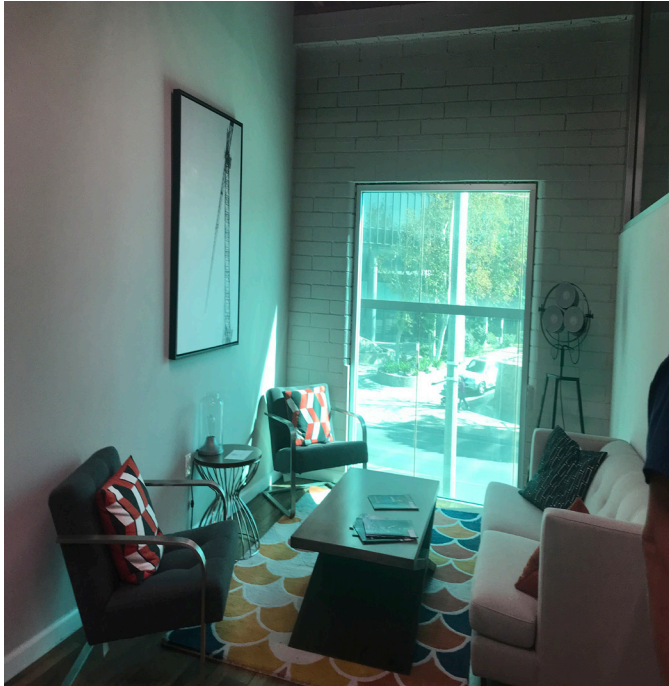
FOR MORE INFORMATION PLEASE CONTACT:

Phyllis Palin
Principal
818.933.0319
ppalin@lee-re.com
BRE # 00923061



Lee & Associates®-LA North/Ventura, Inc.
Corporate ID #01191898
A Member of the Lee & Associates Group of Companies
15250 Ventura Boulevard, Suite 100
Sherman Oaks, CA 91403
818.986.9800 Main | 818.933.0405 Fax

No warranty or representation is made to the accuracy of the foregoing information. Terms of sale or lease and availability are subject to change or withdrawal without notice.



AVAILABLE

Suite	Size	Lease Rate
207*	1,200 SF	\$3.50 FSG
210*	3,250 SF	\$4.50 FSG

* Contiguous to 4,450 SF

PROPERTY HIGHLIGHTS

- ▣ Large space has its own restroom
- ▣ Walking distance to excellent amenities
- ▣ On site parking
- ▣ Easy Access to the 10 Freeway
- ▣ Perfect for post Covid-19
- ▣ Close to Future Beverly Hills Metro Stop

