

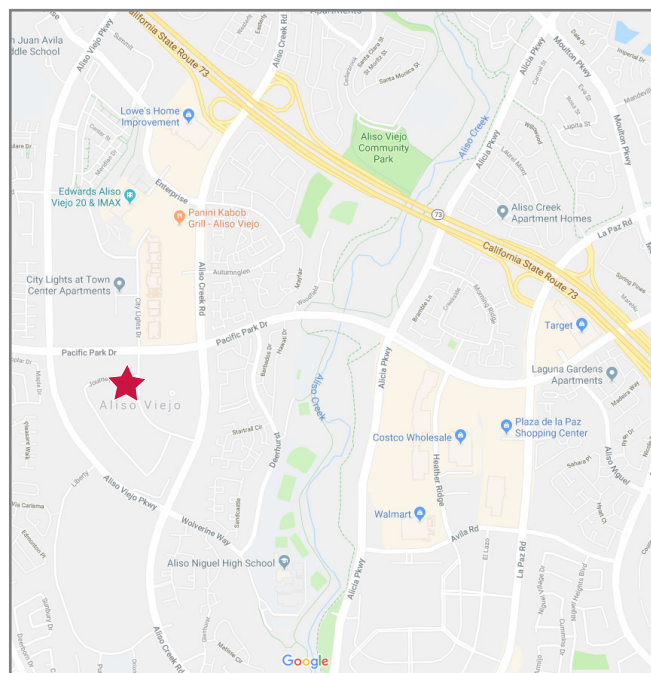
# ±1,577 SF MEDICAL SUITE FOR SUBLEASE

## 2 Journey, Suite 201 • Aliso Viejo, CA



### LISTING DATA

- Suite 201: ±1,577SF
- High-end built out medical office suite
- Waiting room, reception, 2 private restrooms, 3 exam rooms, nurse station, kitchen, and doctor's office
- Covered parking and one (1) reserved parking stall
- 5:1000 parking ratio
- New state-of-the-art LPA designed building
- High image lobby with two (2) elevators
- Walking distance from the Aliso Viejo Town Center
- Built in 2008
- Sublease thru August 23, 2023
- Lease rate: \$3.50 NNN (Nets: \$0.60)



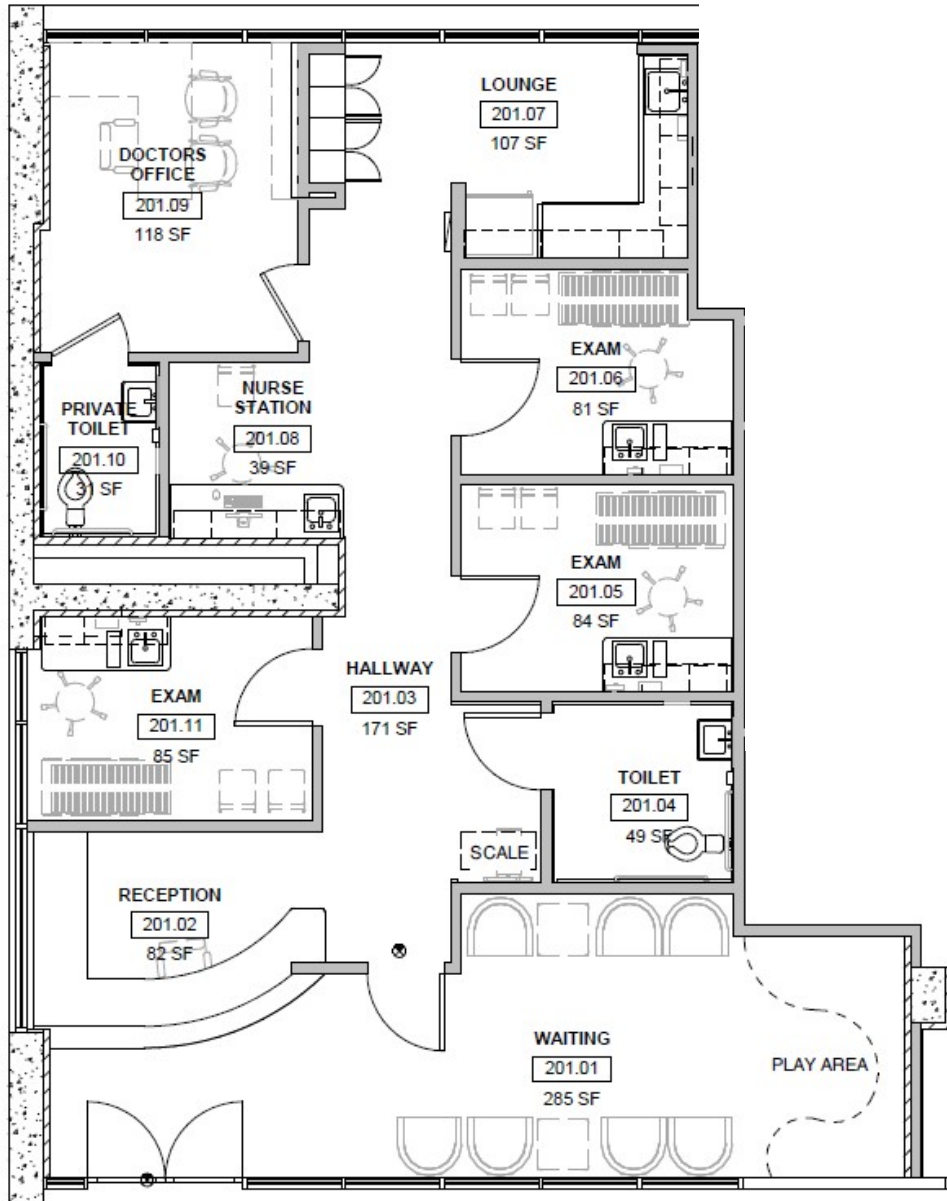
Exclusively Listed By: **ALLEN BASSO**  
Senior Vice President  
CalBRE 01298152  
D 949.790.3130  
abasso@leeirvine.com

**ERIC DARNELL**  
Vice President  
CalBRE 01888743  
D 949.790.3157  
edarnell@leeirvine.com

All information furnished regarding property for sale, rental or financing is from sources deemed reliable, but no warranty or representation is made to the accuracy thereof and same is submitted to errors, omissions, change of price, rental or other conditions prior to sale, lease or financing or withdrawal without notice. No liability of any kind is to be imposed on the broker herein.

**±1,577 SF MEDICAL SUITE FOR SUBLEASE**  
2 Journey, Suite 201 • Aliso Viejo, CA

**FLOOR PLAN**  
**SUITE 201: ±1,577 SF**



Exclusively Listed By: **ALLEN BASSO**  
Senior Vice President  
CalBRE 01298152  
D 949.790.3130  
abasso@leeirvine.com

**ERIC DARNELL**  
Vice President  
CalBRE 01888743  
D 949.790.3157  
edarnell@leeirvine.com

All information furnished regarding property for sale, rental or financing is from sources deemed reliable, but no warranty or representation is made to the accuracy thereof and same is submitted to errors, omissions, change of price, rental or other conditions prior to sale, lease or financing or withdrawal without notice. No liability of any kind is to be imposed on the broker herein.