

# ARDEN MEDICAL PLAZA

435 Arden Avenue

Glendale, California

Medical Space  
for Lease



**SPACE AVAILABLE:** Suite 340 1,504 RSF  
Suite 370 1,639 RSF  
Suite 520 3,731 RSF (Divisible)

**RENTAL RATE:** \$2.95/RSF, Full Service Gross

**PARKING:** Abundant Parking - Ratio of 5/1000  
Free Patient Parking, Secured Physician Parking

**HIGHLIGHTS:**

- Pharmacy & Laboratory On-Site
- Easy access to 134 & 5 Freeways
- Within Walking Distance to Shops & Restaurants

FOR LEASING INQUIRIES CONTACT:

**JENNIFER DONALDSON** 818.933.0347

LICENSE ID #01317737  
jdonaldson@lee-re.com

**PAULETTE TOUMAZOS** 818.933.0346

LICENSE ID #00930676  
ptoumazos@lee-re.com

**LEE & ASSOCIATES**

COMMERCIAL REAL ESTATE SERVICES

Lee & Associates®  
LA North/Ventura, Inc.  
CORPORATE ID #01191898  
A Member of the Lee & Associates Group of Companies

15250 Ventura Blvd., Suite 100  
Sherman Oaks, CA 91403  
P: 818-986-9800 F: 818-783-9260  
www.lee-associates.com

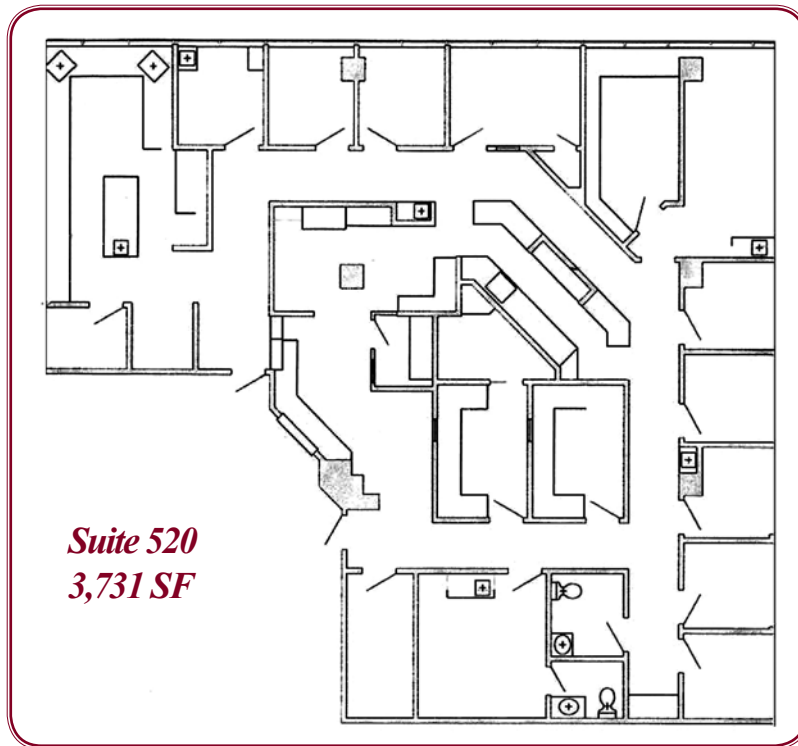
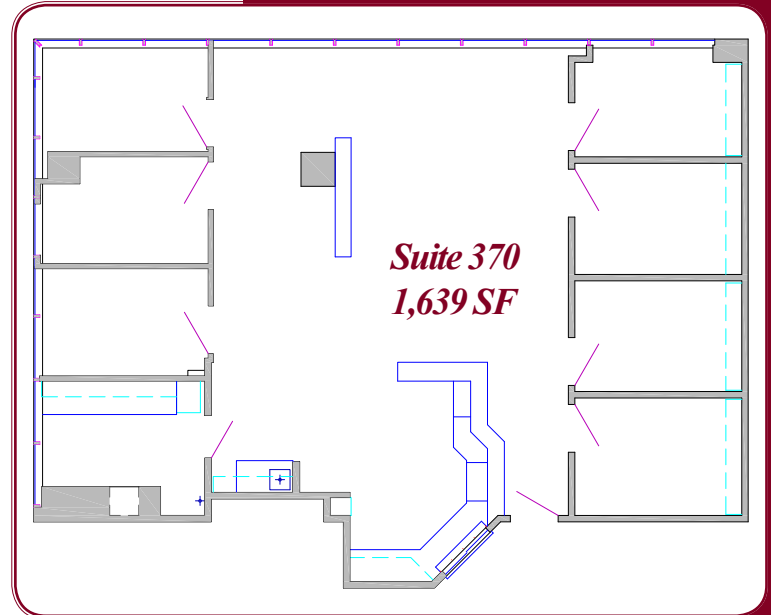
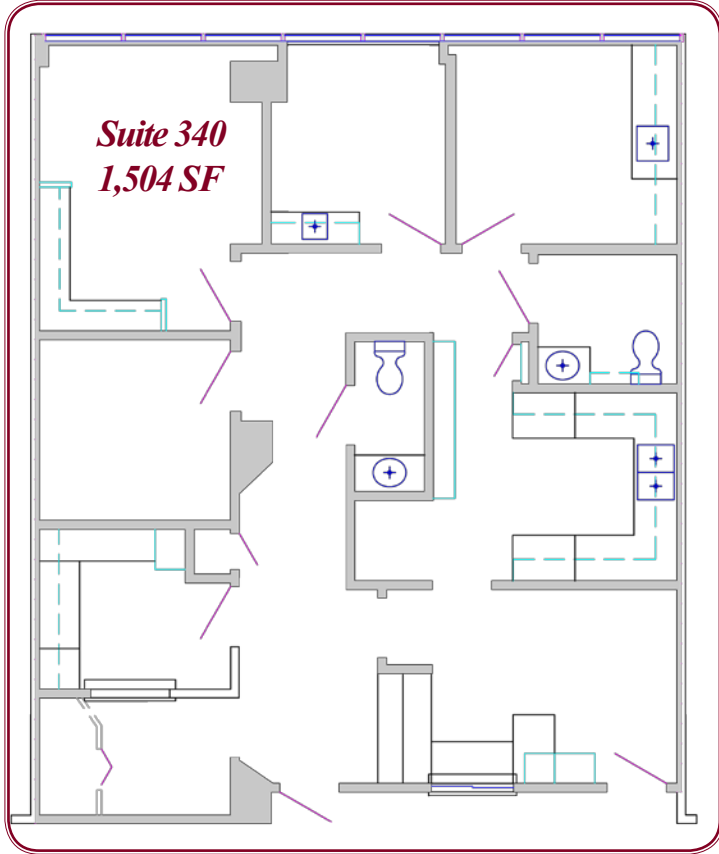
No warranty or representation is made to the accuracy of the foregoing information. Terms of sale or lease and availability are subject to change or withdrawal without notice.

# ARDEN MEDICAL PLAZA

435 Arden Avenue

Glendale, California

## Medical Space for Lease



FOR LEASING INQUIRIES CONTACT:

**JENNIFER DONALDSON**

**818.933.0347**

LICENSE ID #01317737

[jdonaldson@lee-re.com](mailto:jdonaldson@lee-re.com)

**PAULETTE TOUMAZOS**

**818.933.0346**

LICENSE ID #00930676

[ptoumazos@lee-re.com](mailto:ptoumazos@lee-re.com)