

WILSHIRE TOWER
2811
WILSHIRE

OFFICE & MEDICAL SPACE FOR LEASE



PAULETTE TOUMAZOS
JENNIFER DONALDSON

818.986.9800
818.986.9800

ptoumazos@lee-re.com
jdonaldson@lee-re.com

Lic # 00930676
Lic # 01317737



No warranty or representation is made to the accuracy of the foregoing information. Terms of sale or lease and availability are subject to change or withdrawal without notice.

WILSHIRE TOWER
2811
WILSHIRE

OFFICE & MEDICAL SPACE FOR LEASE

AVAILABLE: Suite 502 • 2,235 RSF
Suite 777 • 2,022 RSF
Suite 950 • 4,398 RSF (Divisible)

RENTAL RATE: Negotiable, Full Service Gross Basis

PARKING: 3/1,000 | \$175 Unreserved | \$275 Reserved | \$300 Tandem

WILSHIRE TOWER
2811
WILSHIRE

OFFICE & MEDICAL SPACE FOR LEASE

HIGHLIGHTS: Excellent Visitor Parking
Professional Property Management
Within Walking Distance to Restaurants, Banks, Shopping, etc.

WILSHIRE TOWER
2811
WILSHIRE

OFFICE & MEDICAL SPACE FOR LEASE



WILSHIRE TOWER
2811
WILSHIRE

OFFICE & MEDICAL SPACE FOR LEASE

SUITE 502

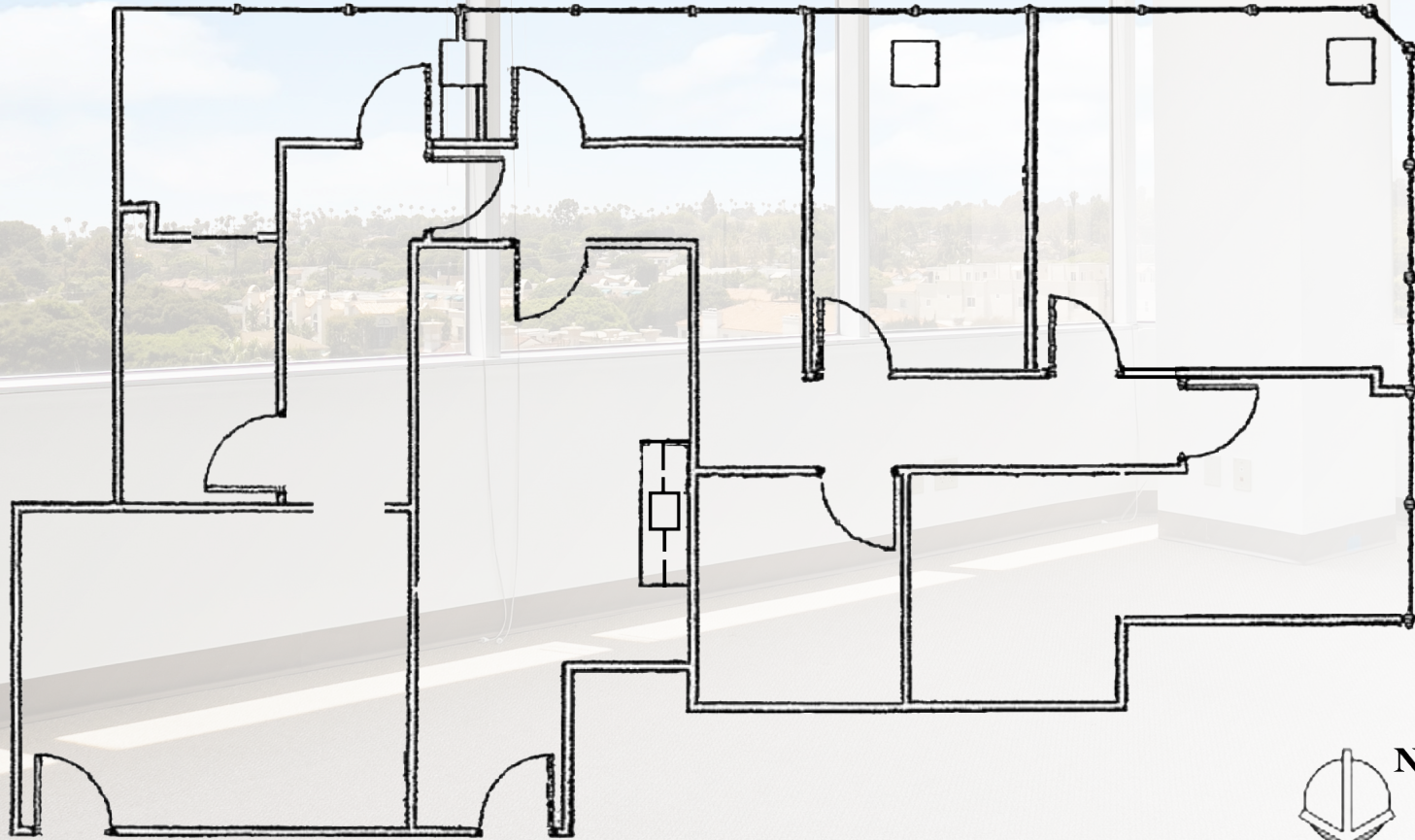


NOT TO SCALE

WILSHIRE TOWER
2811
WILSHIRE

OFFICE & MEDICAL SPACE FOR LEASE

SUITE 777

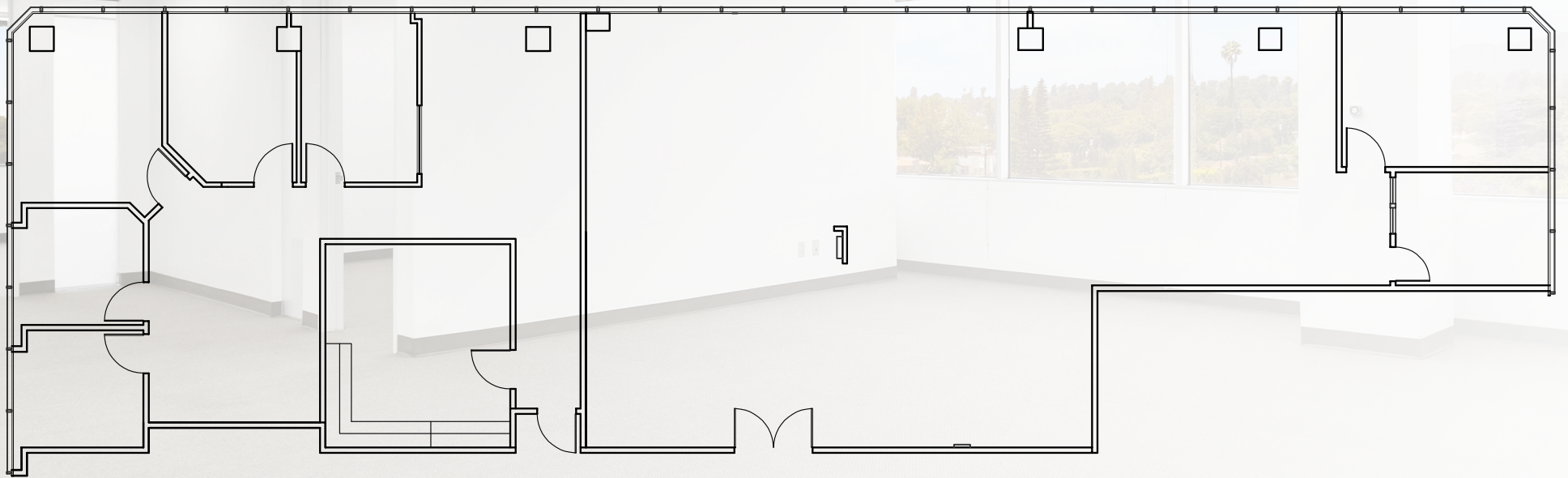


NOT TO SCALE

WILSHIRE TOWER
2811
WILSHIRE

OFFICE & MEDICAL SPACE FOR LEASE

SUITE 950



NOT TO SCALE



PAULETTE TOUMAZOS

818.986.9800

ptoumazos@lee-re.com

Lic # 00930676

JENNIFER DONALDSON

818.986.9800

jdonaldson@lee-re.com

Lic # 01317737



COMMERCIAL REAL ESTATE SERVICES

Lee & Associates® -LA North/Ventura, Inc.
Corporate ID #01191898

A Member of the Lee & Associates Group of Companies
15250 Ventura Blvd, Suite 100, Sherman Oaks, CA 91403

P: 818.986.9800 F: 818.783.9260

www.lee-associates.com