

FOR SUBLEASE



1901 NEWPORT PLAZA

SUITE 180 | COSTA MESA, CA

FOLLOW US ON INSTAGRAM @LEEASSOCIATESIRVINE

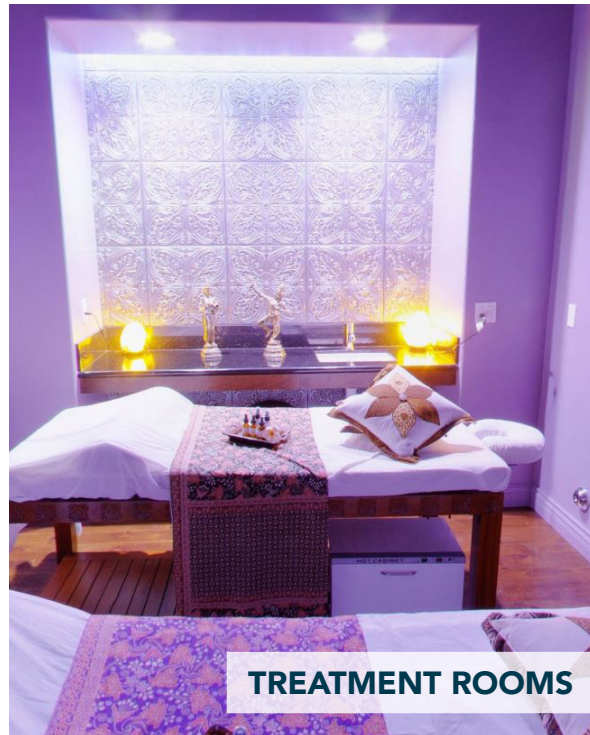


Allen Basso
Senior Vice President
CalDRE 01298152
949.790.3130
abasso@leeirvine.com

Brian Garbutt
Senior Vice President
CalDRE 01215482
949.724.4721
bgarbutt@lee-associates.com

Eric Darnell
Vice President
CalDRE: 01888743
949.790.3157
edarnell@leeirvine.com

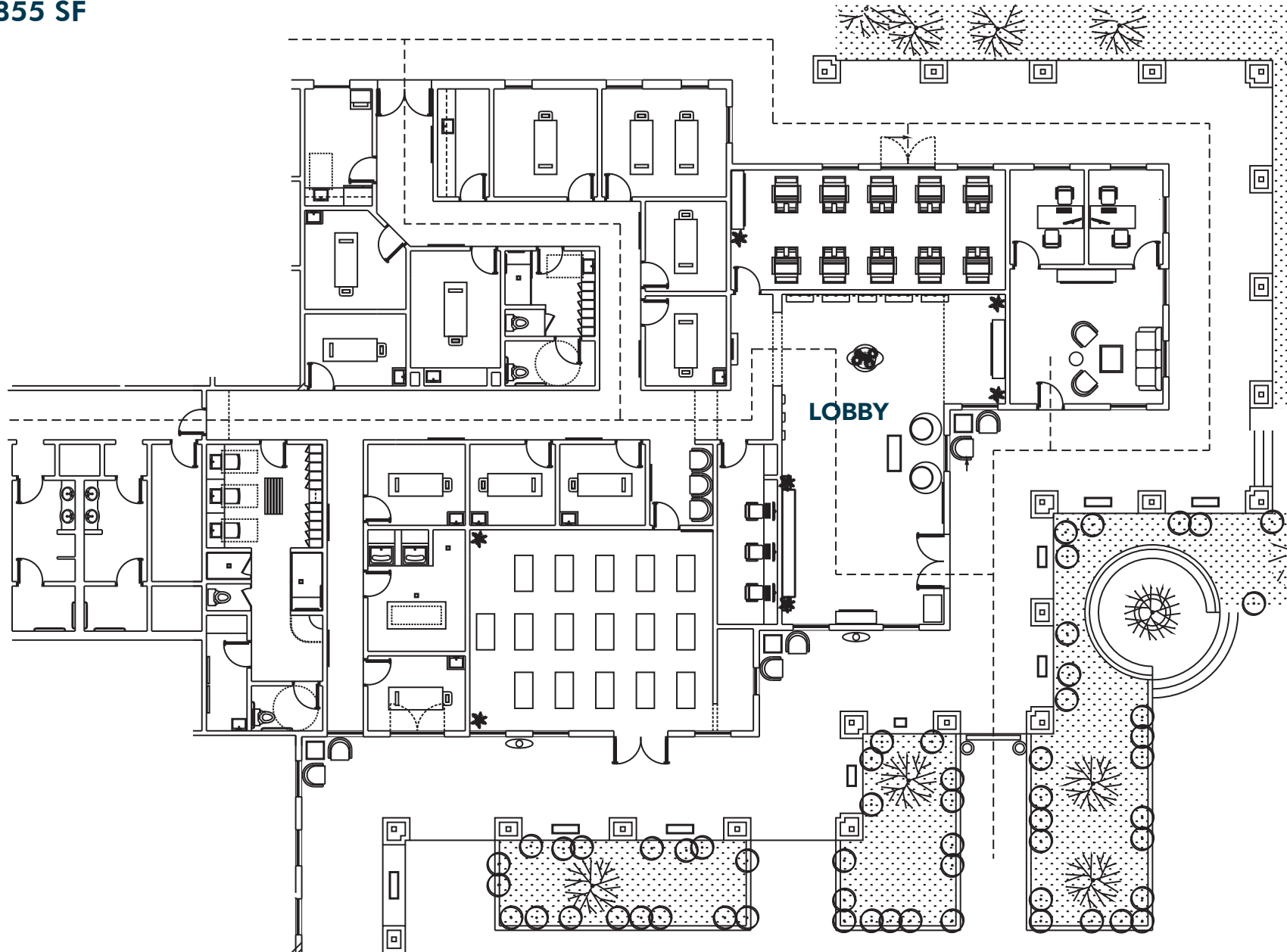
PROPERTY HIGHLIGHTS



FEATURES

- MUST SEE MEDICAL SPA AND ALTERNATIVE HOLISTIC HEALTH SPACE
- DRAMATIC 3-STORY ATRIUM WITH BALCONIES, CUSTOM MARBLE FLOORS, BEVELED GLASS, WROUGHT IRON APPOINTMENTS AND INTERIOR TEAK MILLWORK
- RENOWNED ARCHITECTURE WITH BEAUTIFUL COURTYARDS AND TRANQUIL FOUNTAINS
- FREE STRUCTURE AND SURFACE PARKING
- WALK TO THE TRIANGLE WITH BRAND NEW RESTAURANTS, SHOPPING AND FITNESS
- IMMEDIATE ACCESS TO MAJOR FREEWAYS
- ±7,855 SF AVAILABLE NOW
- \$2.85 FSG — SUBLEASE THROUGH DECEMBER 2023
- ABOVE HIGH END FINISHED
- ONE OF A KIND SPACE
- EXTERIOR CANOPY SIGNAGE VISIBLE FROM 55 FREEWAY

AVAILABLE
7,855 SF



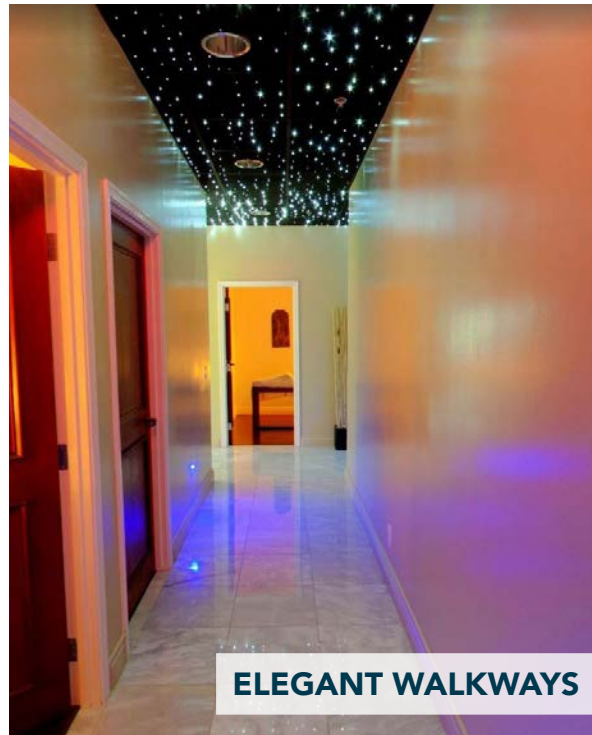
PROPERTY IMAGES



FORMAL LOBBY



GROUP ROOMS



ELEGANT WALKWAYS

