

# VILLAGE MEDICAL CENTER

12840 Riverside Dr, Valley Village, CA

## Medical Space For Sublease

### SUBLEASE DETAILS

- 4th Floor Medical Suite | 991 RSF
- Rent Negotiable, FSG Basis
- Available Immediately
- Sublease Through 03/31/24

### PROPERTY HIGHLIGHTS

- Highly Efficient Suite Configuration in Excellent Condition
- Expansive Northern Views
- Centrally Located at the 101 Fwy & Coldwater Canyon
- Within 8 Miles of 5 Regional Hospital Campuses



Lee & Associates®-LA North/Ventura, Inc.

CORPORATE ID #01191898

A Member of the Lee & Associates Group of Companies

15250 Ventura Blvd., Suite 100, Sherman Oaks, CA 91403

P: 818-986-9800 F: 818-783-9260 • [www.lee-associates.com](http://www.lee-associates.com)

FOR LEASING INQUIRIES CONTACT:

JENNIFER DONALDSON

818.986.9800

License ID #01317737

[jdonaldson@lee-re.com](mailto:jdonaldson@lee-re.com)

No warranty or representation is made to the accuracy of the foregoing information. Terms of sale or lease and availability are subject to change or withdrawal without notice.



## VILLAGE MEDICAL CENTER | Medical Space For Sublease

FOR LEASING INQUIRIES CONTACT:

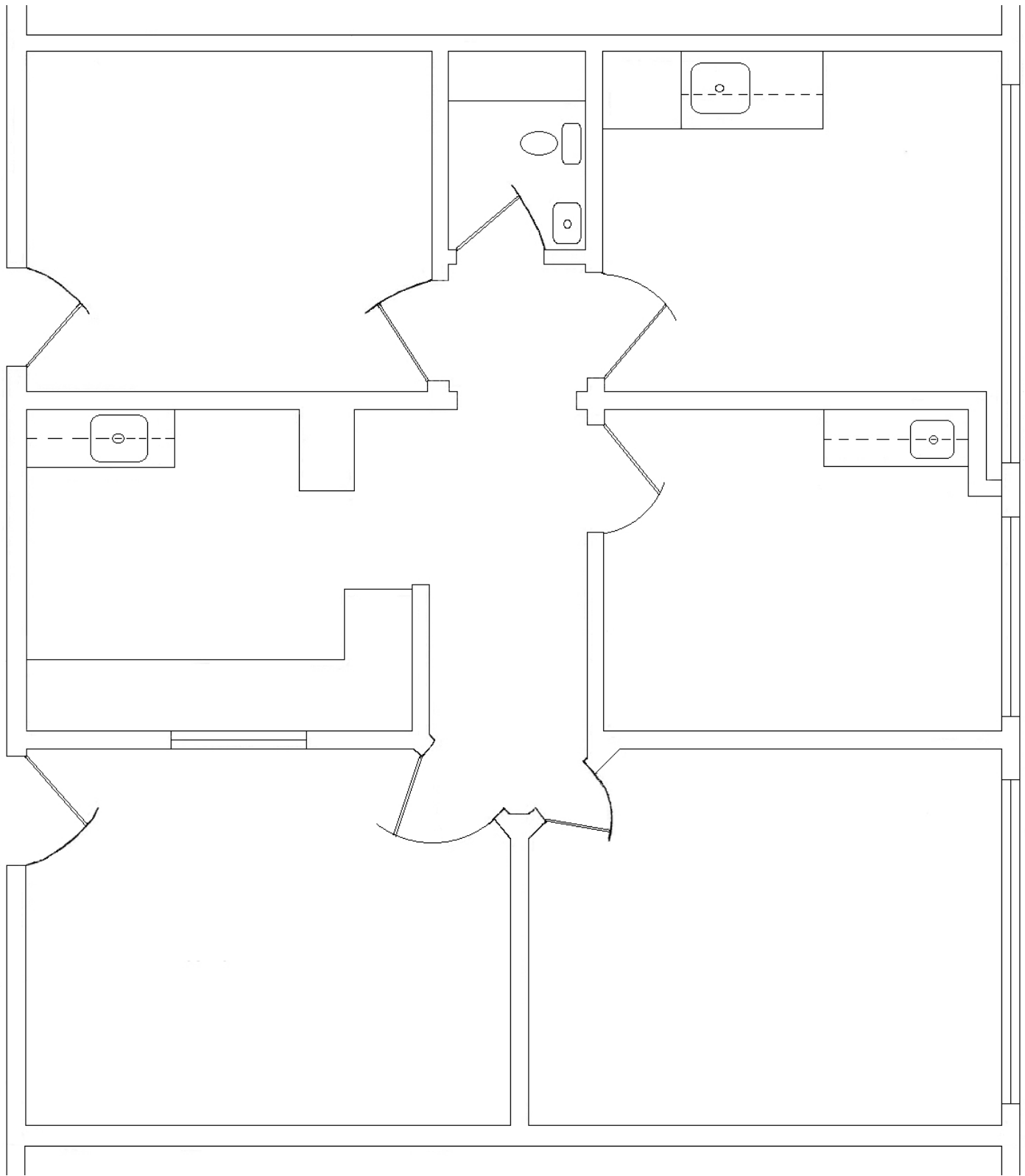
JENNIFER DONALDSON

818.986.9800

[jdonaldson@lee-re.com](mailto:jdonaldson@lee-re.com)

 **LEE &  
ASSOCIATES**  
COMMERCIAL REAL ESTATE SERVICES

No warranty or representation is made to the accuracy of the foregoing information. Terms of sale or lease and availability are subject to change or withdrawal without notice.



## VILLAGE MEDICAL CENTER | **Medical Space For Sublease**

FOR LEASING INQUIRIES CONTACT:

JENNIFER DONALDSON

818.986.9800

[jdonaldson@lee-re.com](mailto:jdonaldson@lee-re.com)



No warranty or representation is made to the accuracy of the foregoing information. Terms of sale or lease and availability are subject to change or withdrawal without notice.