

MEDICAL SPACE FOR LEASE

12626 Riverside Dr • Valley Village | CA



 **LEE &
ASSOCIATES**
COMMERCIAL REAL ESTATE SERVICES

Todd Wuschnig
Principal
818.933.0301
twuschnig@lee-re.com
DRE 01367230

Jennifer Donaldson
Principal
818.933.0347
jdonaldson@lee-re.com
DRE 01317737

No warranty or representation is made to the accuracy of the foregoing information. Terms of sale or lease and availability are subject to change or withdrawal without notice. CID 01191898



PROPERTY DETAILS

Lease Rate: \$2.95/SF FSG
Parking: \$100.00 per car, per month
Term: 3-5 Years

AVAILABILITY

SUITE	SQ. FT.
301	±2,786 RSF
306	±1,197 RSF
308	±1,473 RSF

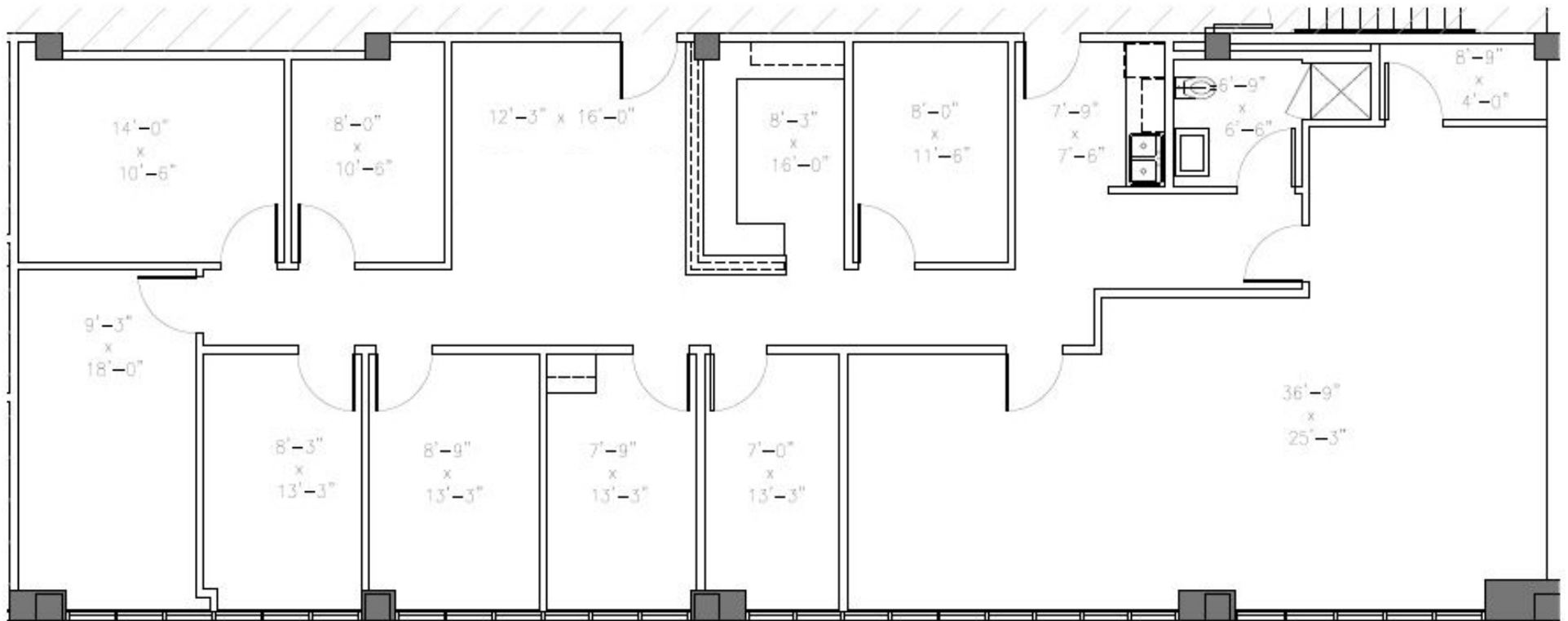
* Suites 306 & 308 contiguous for 2,670 RSF

PROPERTY HIGHLIGHTS

- New Ownership
- New Renovations
- On-Site Pharmacy
- Great Window Line
- Great Street Parking (free & Unmetered)
- Covered on-site parking in secured lot

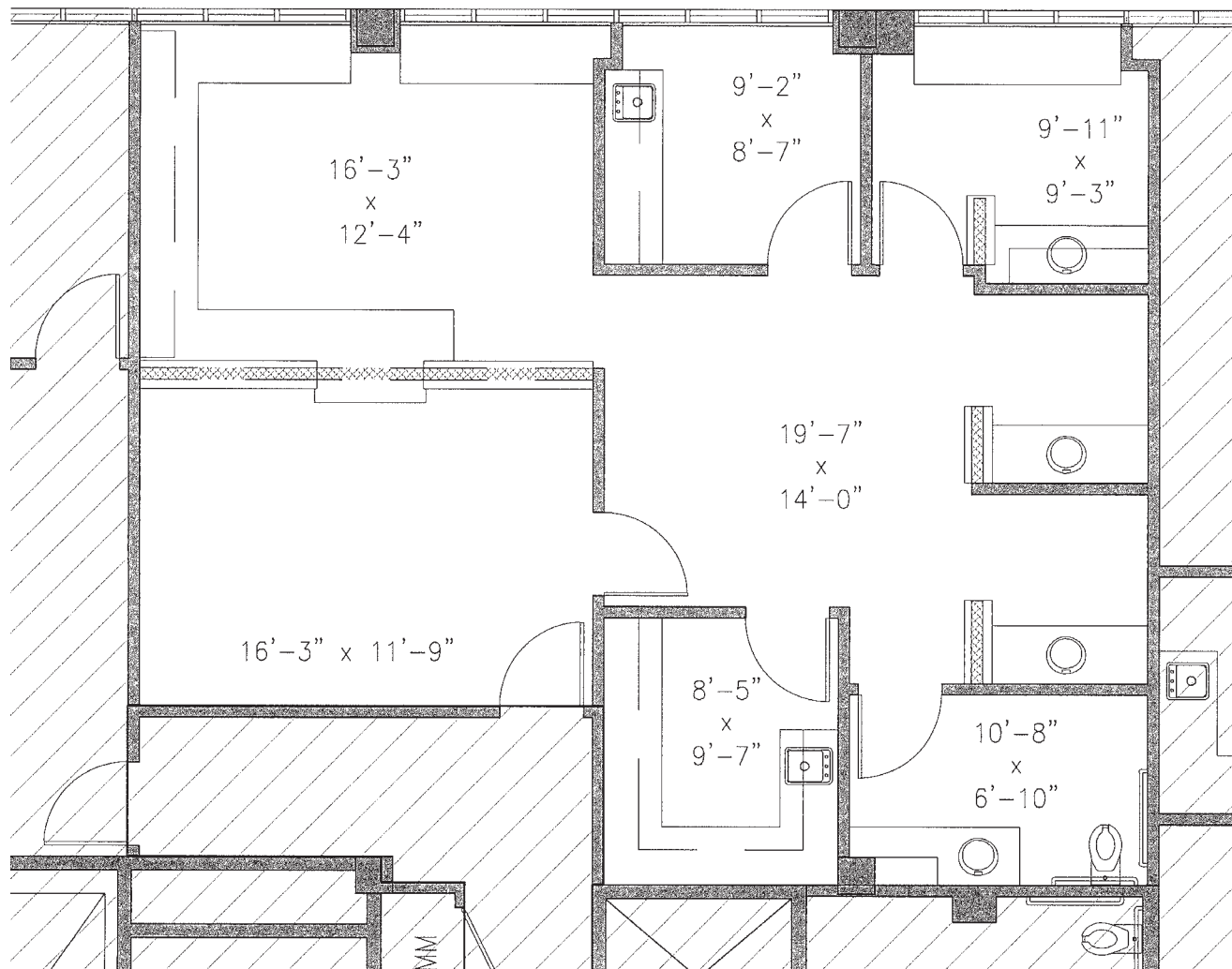


SUITE 301 FLOOR PLAN • ±2,786 RSF



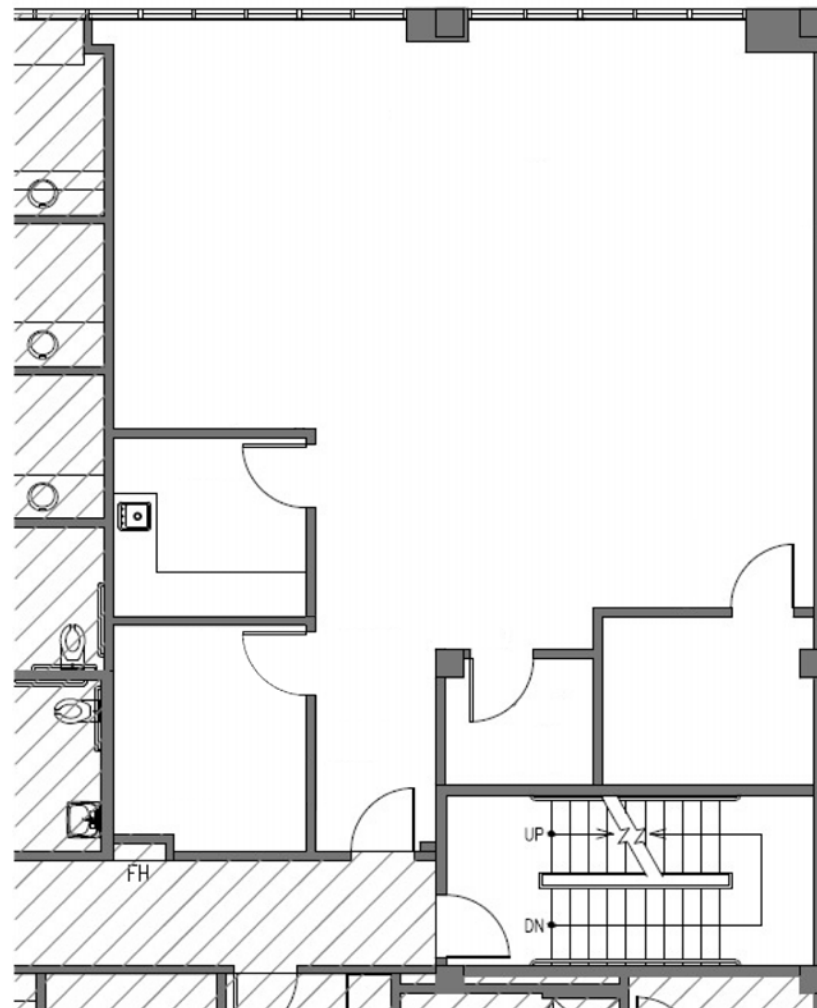
NOT TO SCALE

SUITE 306 FLOOR PLAN • ±1,197 RSF



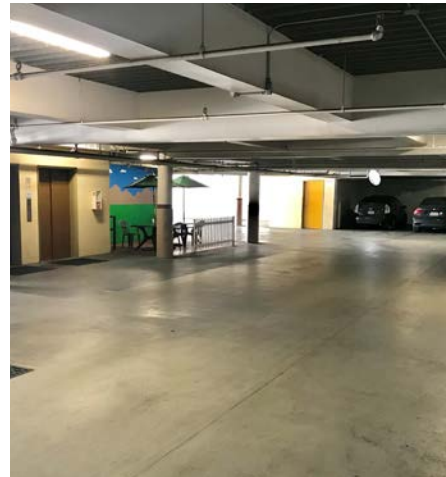
NOT TO SCALE

SUITE 308 FLOOR PLAN • ±1,473 RSF



NOT TO SCALE

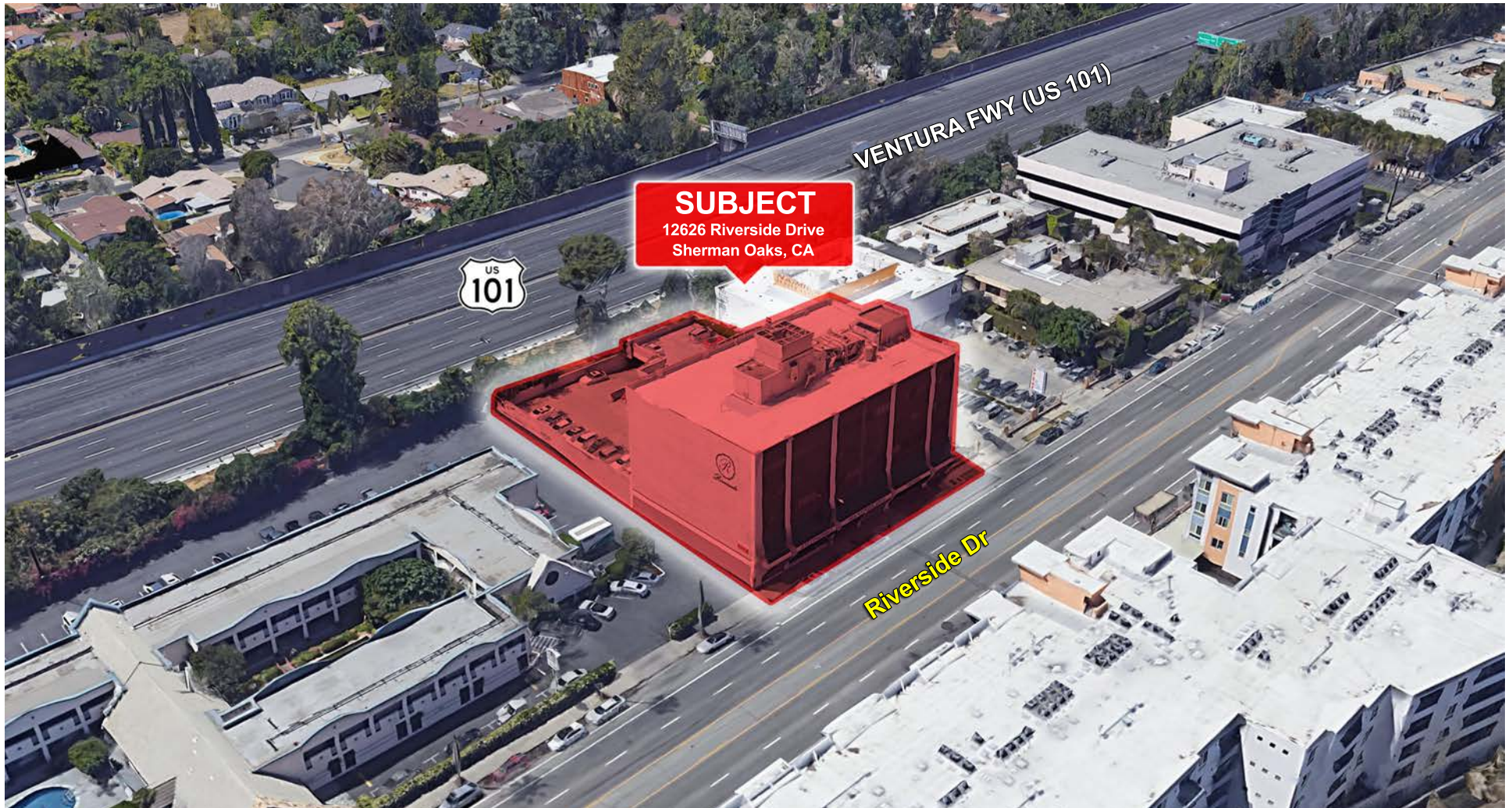
PROPERTY PHOTOS



12626 Riverside Dr • Valley Village | CA

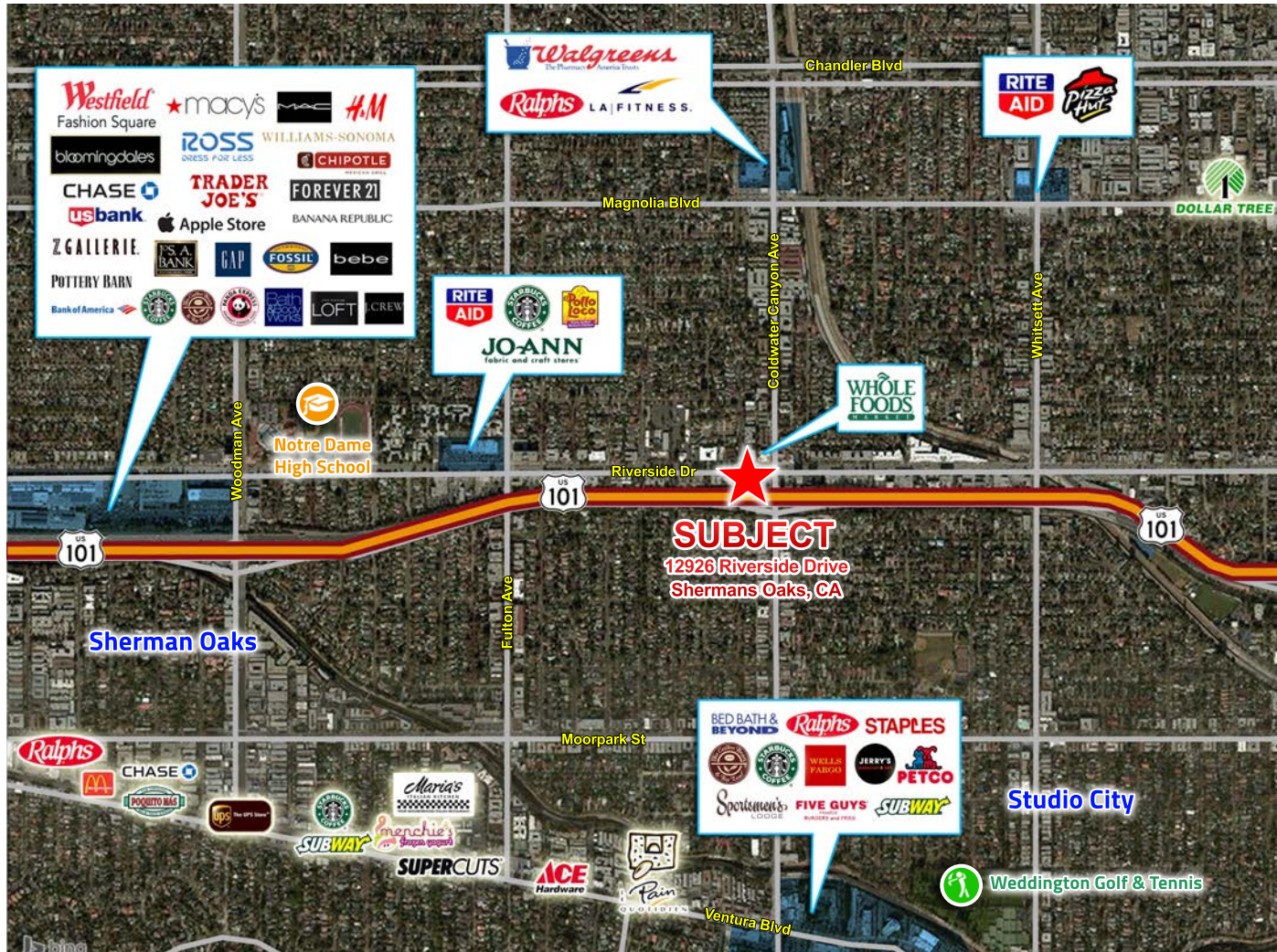
MEDICAL SPACE AVAILABLE FOR LEASE

AERIAL



12626 Riverside Dr • Valley Village | CA

OFFICE SPACE AVAILABLE FOR LEASE



For more information:

Todd Wuschnig

Principal
818.933.0301
twuschnig@lee-re.com
DRE# 01320005

Jennifer Donaldson

Principal
818.933.0347
jdonaldson@lee-re.com
DRE# 01317737



**LEE &
ASSOCIATES**

COMMERCIAL REAL ESTATE SERVICES

Lee & Associates® - LA North/Ventura, Inc.
Corporate ID #01191898
A Member of the Lee & Associates®
Group of Companies
15250 Ventura Blvd., Suite 100
Sherman Oaks, CA 91403
P:818.223.4388 F:818.591.1450