

# OFFICE SPACE FOR LEASE

1700 LOMBARD ST • OXNARD, CA



## PROPERTY SPECIFICATIONS

<b>LOCATION:</b>	1700 Lombard St, Oxnard
<b>YEAR BUILT:</b>	2001
<b>BLDG. SIZE:</b>	20,885 SF
<b>AVAILABLE:</b>	1,485 - 2,467 RSF
<b>STORIES:</b>	3
<b>ELEVATOR:</b>	Yes
<b>PARKING:</b>	100 Surface Spaces
<b>ZONING:</b>	C-2



## PROPERTY HIGHLIGHTS

- High Image Office Building
- Competitive Lease Rate
- Flexible Floor Plans
- Medical Use Allowed
- Abundant On-Site Parking
- Close to Retail and Restaurant Amenities
- Easy Access to Ventura 101 Freeway
- Onsite and Professionally Managed



COMMERCIAL REAL ESTATE SERVICES

Lee & Associates® - LA North/Ventura, Inc. • Corporate ID #01191898  
A Member of the Lee & Associates Group of Companies  
1000 Town Center Drive, Suite 310, Oxnard, CA 93036  
Tel 805.626.1200 | Fax 805.413.7000 • www.lee-associates.com

No warranty or representation is made to the accuracy of the foregoing information. Terms of sale or lease and availability are subject to change or withdrawal without notice.

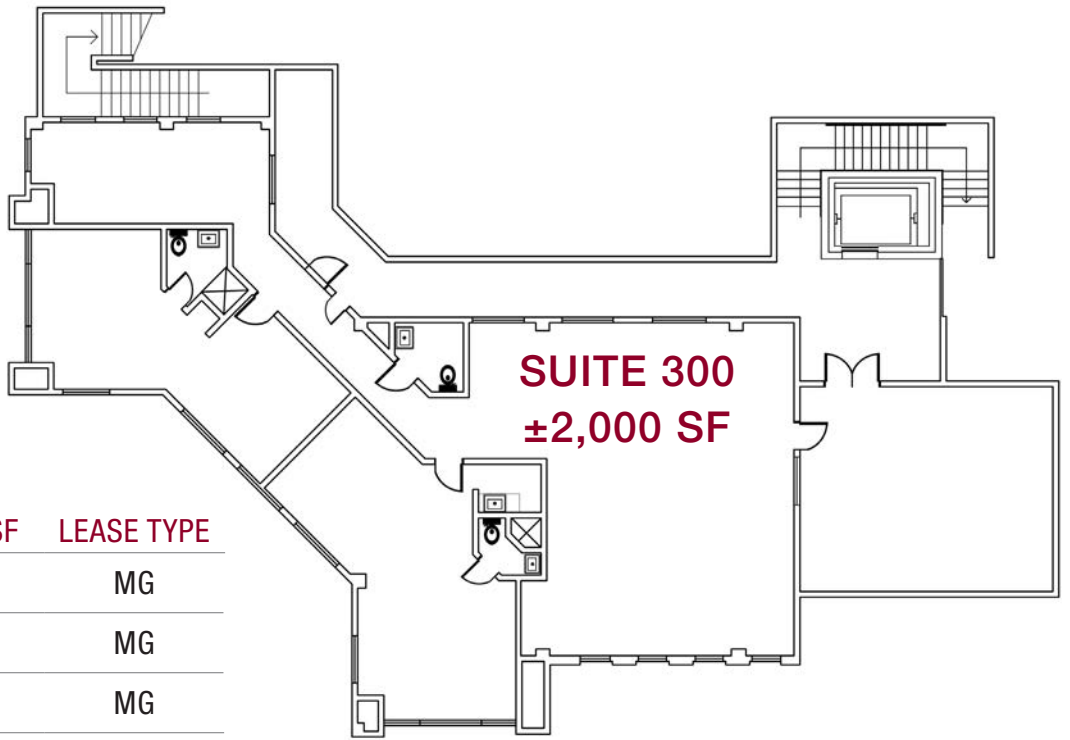
**DAVID KIM**

Principal

Lic. 01483179

805.626.1234 | Direct

dkim@lee-re.com



## AVAILABILITY

SUITE	SIZE (RSF)	RATE PSF	LEASE TYPE
200	±1,485	\$1.50	MG
230	±2,467	\$1.00	MG
300	±2,000	\$1.50	MG



**LEE & ASSOCIATES**

COMMERCIAL REAL ESTATE SERVICES

Lee & Associates® - LA North/Ventura, Inc. • Corporate ID #01191898  
 A Member of the Lee & Associates Group of Companies  
 1000 Town Center Drive, Suite 310, Oxnard, CA 93036  
 Tel 805.626.1200 | Fax 805.413.7000 • www.lee-associates.com

**DAVID KIM**

Principal

Lic. 01483179

805.626.1234 | Direct

dkim@lee-re.com

No warranty or representation is made to the accuracy of the foregoing information. Terms of sale or lease and availability are subject to change or withdrawal without notice.