



River Park

PROFESSIONAL CENTER

2901 N. Ventura Road, Oxnard, CA



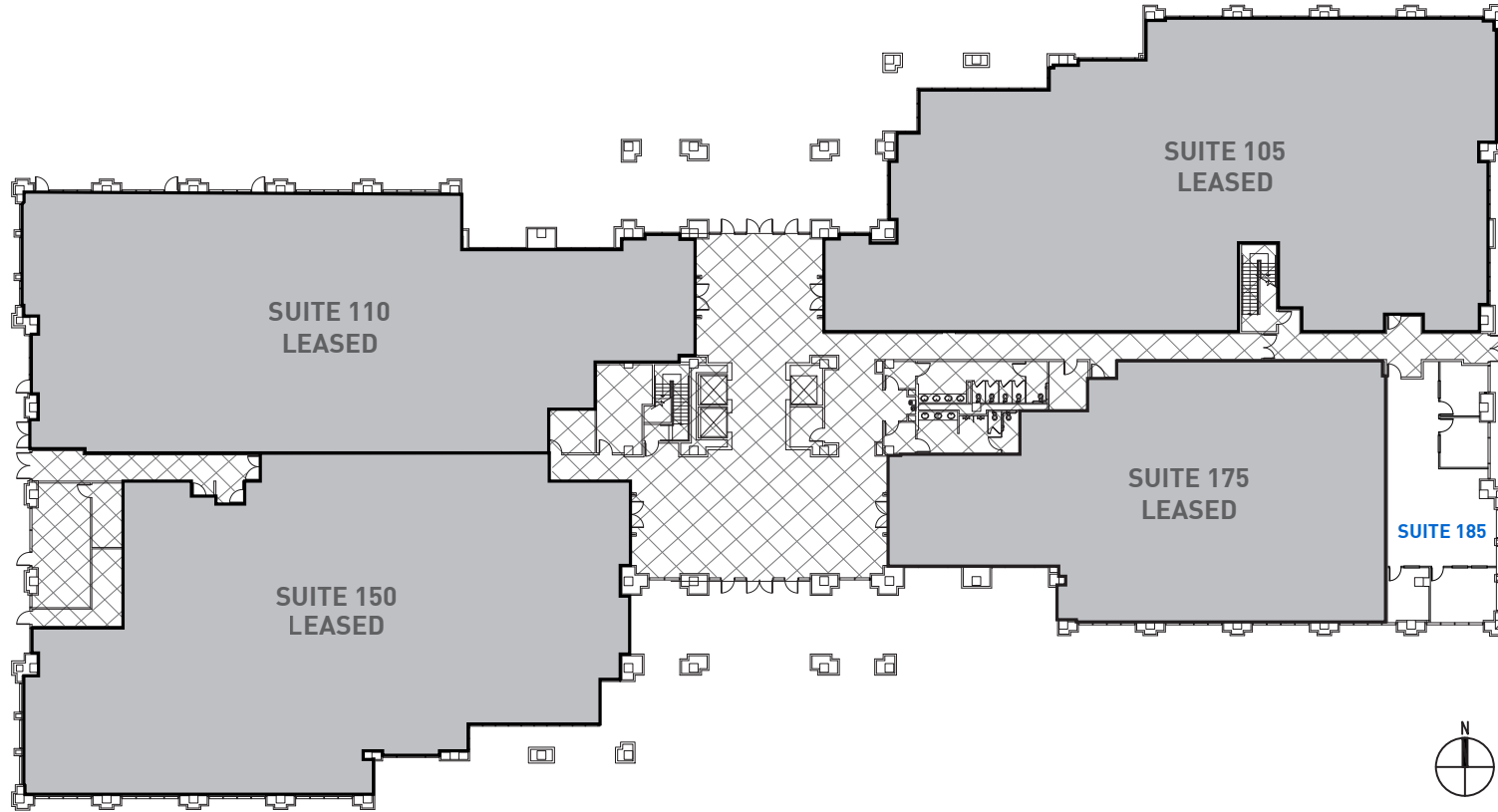
PROPERTY SPECIFICATIONS

LOCATION:	2901 N. Ventura Road, Oxnard, CA 93036
YEAR BUILT:	1993
BUILDING SIZE:	113,029 SF
LOT SIZE:	7.6 Acres
STORIES:	3
ELEVATOR:	Yes
PARKING:	452 Surface Spaces
ZONING:	C-2

PROPERTY HIGHLIGHTS

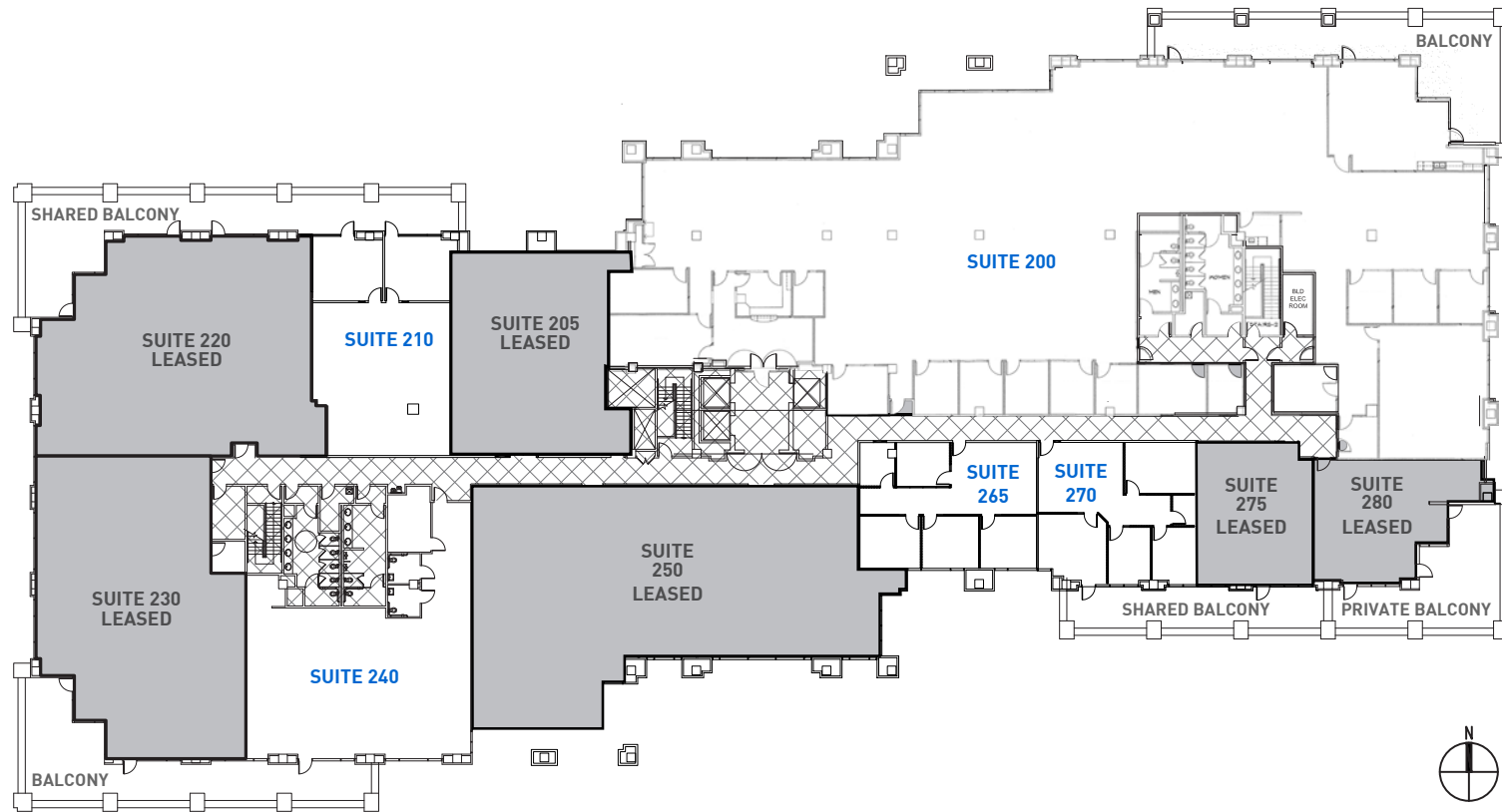
- 3-Story multi-tenant Class 'A' professional office building
- Highly efficient floor plates with flexible floor plans
- Extensive window line with excellent views
- Private balconies (2nd & 3rd Floor)
- Exterior building and monument signage available
- Close proximity to retail and restaurant amenities at The Destination River Park, The Collection
- Easy access to Ventura 101 Freeway

FIRST FLOOR PLAN



SUITE	SIZE	DIVISIBLE	RATE	LEASE TYPE	STATUS
Suite 185	1,774 RSF	No	\$2.40 PSF	Full-Service Gross	Available

SECOND FLOOR PLAN



SUITE	SIZE	DIVISIBLE	RATE	LEASE TYPE	STATUS
Suite 200	14,773 RSF	Yes	\$2.40 PSF	Full-Service Gross	Available
Suite 210	1,921 RSF	No	\$2.40 PSF	Full-Service Gross	Available
Suite 240	2,959 RSF	No	\$2.40 PSF	Full-Service Gross	Available
Suite 265	1,403 RSF	No	\$2.40 PSF	Full-Service Gross	Available
Suite 270	1,383 RSF	No	\$2.40 PSF	Full-Service Gross	Available
Suite 265/270	2,786 RSF	No	\$2.40 PSF	Full-Service Gross	Available

River Park

PROFESSIONAL CENTER

2901 N. Ventura Road, Oxnard, CA



CONTACT:

David Kim

Principal

805.626.1234

dkim@lee-re.com

Lic # 01483179



COMMERCIAL REAL ESTATE SERVICES

Lee & Associates® - LA North/Ventura, Inc.

Corporate ID #01191898

A Member of the Lee & Associates Group of Companies

1000 Town Center Drive, Suite 310

Oxnard, CA 93036

805.626.1200 | 805.413.7000

www.lee-associates.com

No warranty or representation is made to the accuracy of the foregoing information. Terms of sale or lease and availability are subject to change or withdrawal without notice.

