

23832 ROCKFIELD BLVD, SUITE 240 | LAKE FOREST

FOR LEASE

\$2.35 FSG

- SUITE 240: ±1,798 SF
- BUILDING SIZE: ±48,928 SF
- RECENTLY UPDATED SPACE IN RECENTLY DEVELOPED OFFICE BUILDING
- EASY ACCESS TO THE 5 FREEWAY
- ABUNDANT FREE SURFACE PARKING
- RECENTLY UNDERWENT A FULL EXTERIOR RENOVATION
- NICE OPEN AIR COURTYARD
- LOTS OF FOOD OPTIONS IN THE IMMEDIATE AREA
- ADJACENT TO THE IRVINE SPECTRUM AND MINUTES FROM JOHN WAYNE AIRPORT



ALLEN BASSO
Senior Vice President
CaIDRE 01298152
949.790.3130
abasso@leeirvine.com

ERIC DARNELL
Vice President
CaIDRE 01888743
949.790.3157
edarnell@leeirvine.com

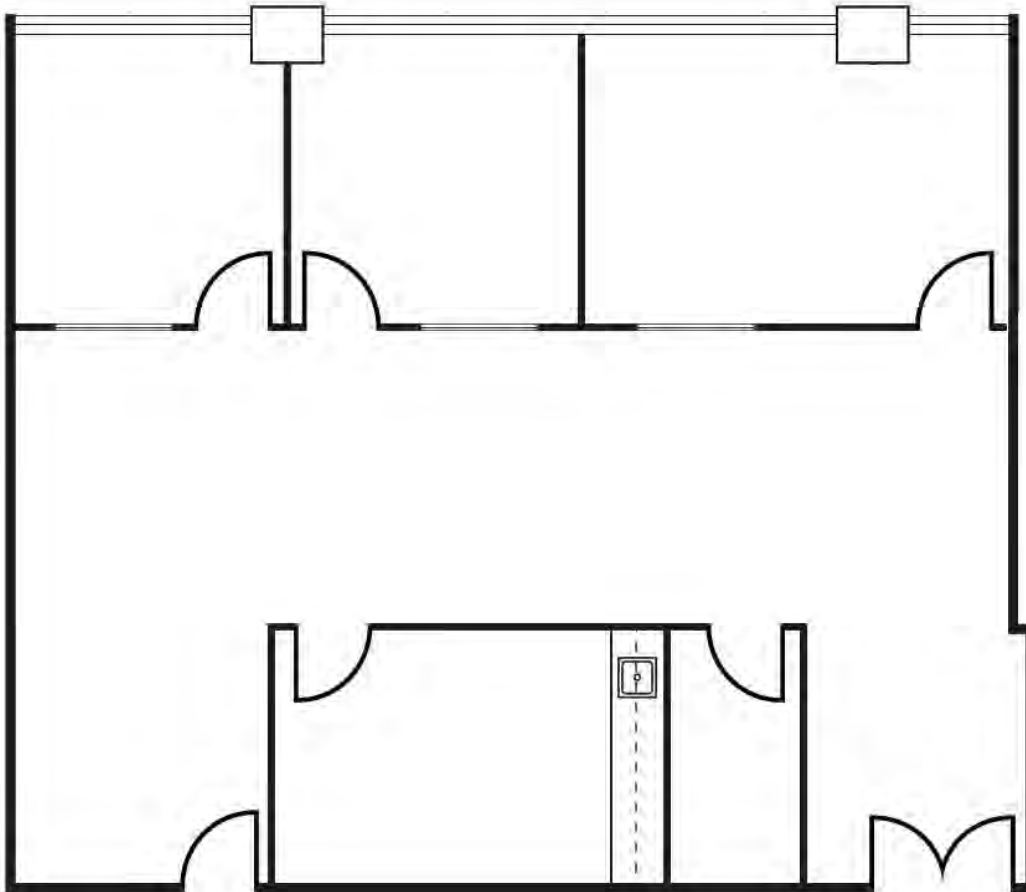
KYLEE KING
Associate
CaIDRE 02101275
949.790.3108
kking@leeirvine.com

orange county
OFFICE | GROUP

FOR LEASE

23832 ROCKFIELD BVLD, SUITE 240 | LAKE FOREST

± 1,798 SF



**LEE &
ASSOCIATES**

COMMERCIAL REAL ESTATE SERVICES

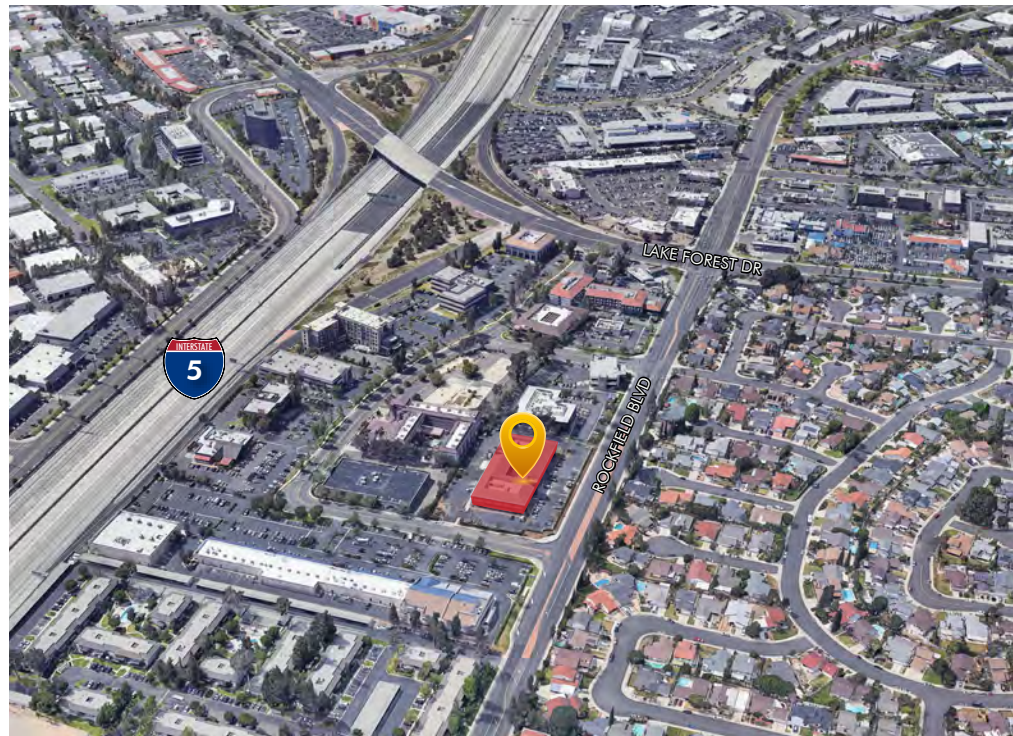
ALLEN BASSO
Senior Vice President
CaIDRE 01298152
949.790.3130
abasso@leeirvine.com

ERIC DARNELL
Vice President
CaIDRE 01888743
949.790.3157
edarnell@leeirvine.com

KYLEE KING
Associate
CaIDRE 02101275
949.790.3108
kking@leeirvine.com

orange county

OFFICE | GROUP



ALLEN BASSO
Senior Vice President
CaDRE 01298152
949.790.3130
abasso@leeirvine.com

ERIC DARNELL
Vice President
CaDRE 01888743
949.790.3157
edarnell@leeirvine.com

KYLEE KING
Associate
CaDRE 02101275
949.790.3108
kking@leeirvine.com

orange county
OFFICE | GROUP