



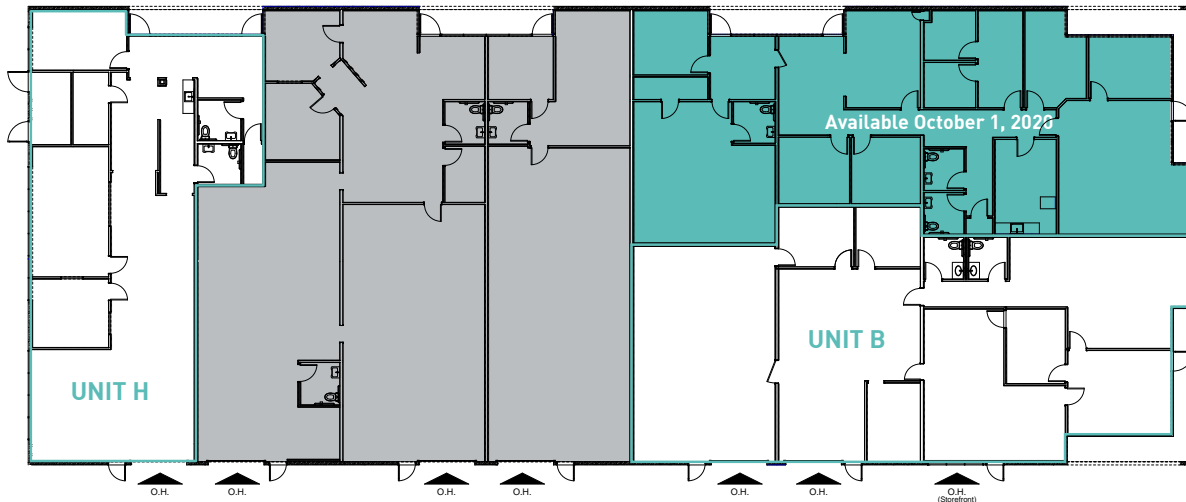
VIDEO TOURS

- **PROPERTY OVERVIEW**
- **UNIT B**
- **UNIT H**

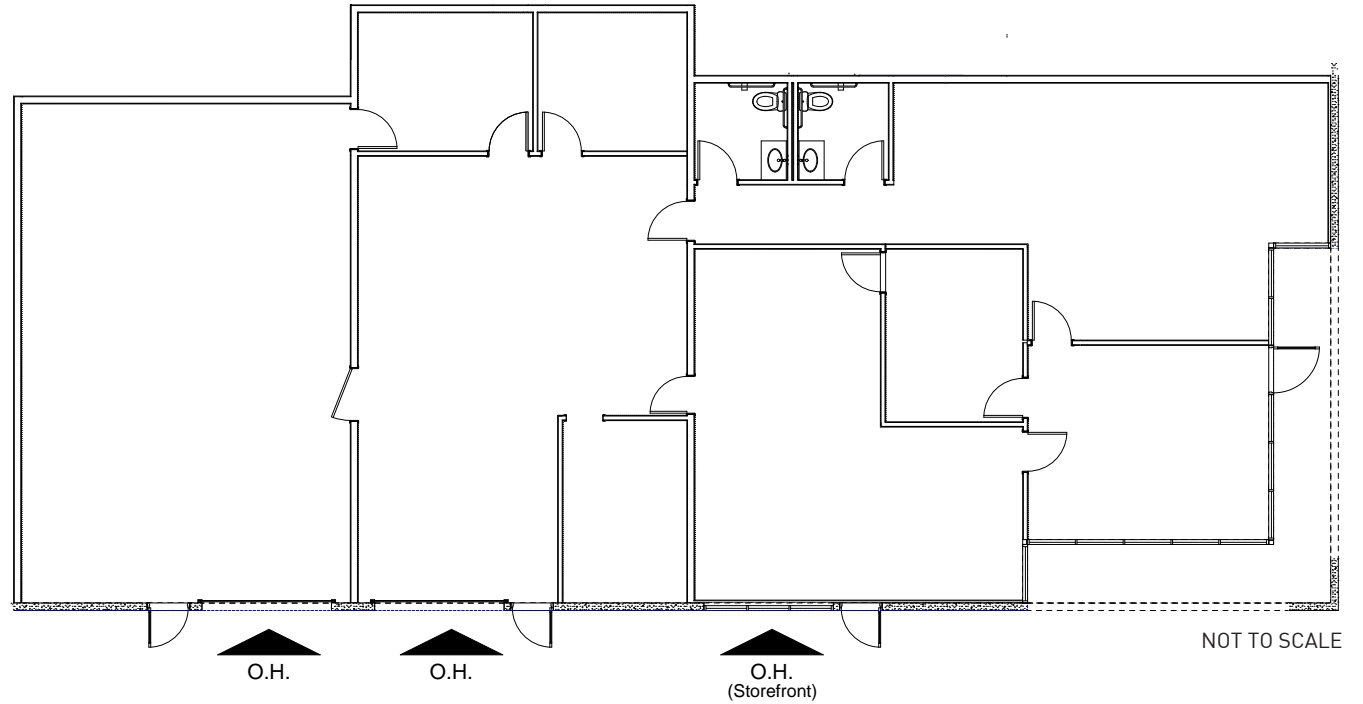
4562
Westinghouse St, Ventura



LOCATION:	4562 Westinghouse St Ventura, CA 93003
YEAR BUILT:	1991
BUILDING SIZE:	17,020 SF
LOADING DOORS:	Ground Level (10'W x 12'H)
CEILING HEIGHT:	14'
POWER:	200A 120-208V 3Ø 4W
PARKING:	50 Surface Spaces Available Ratio of 3.00/1,000 SF
ZONING:	MPD

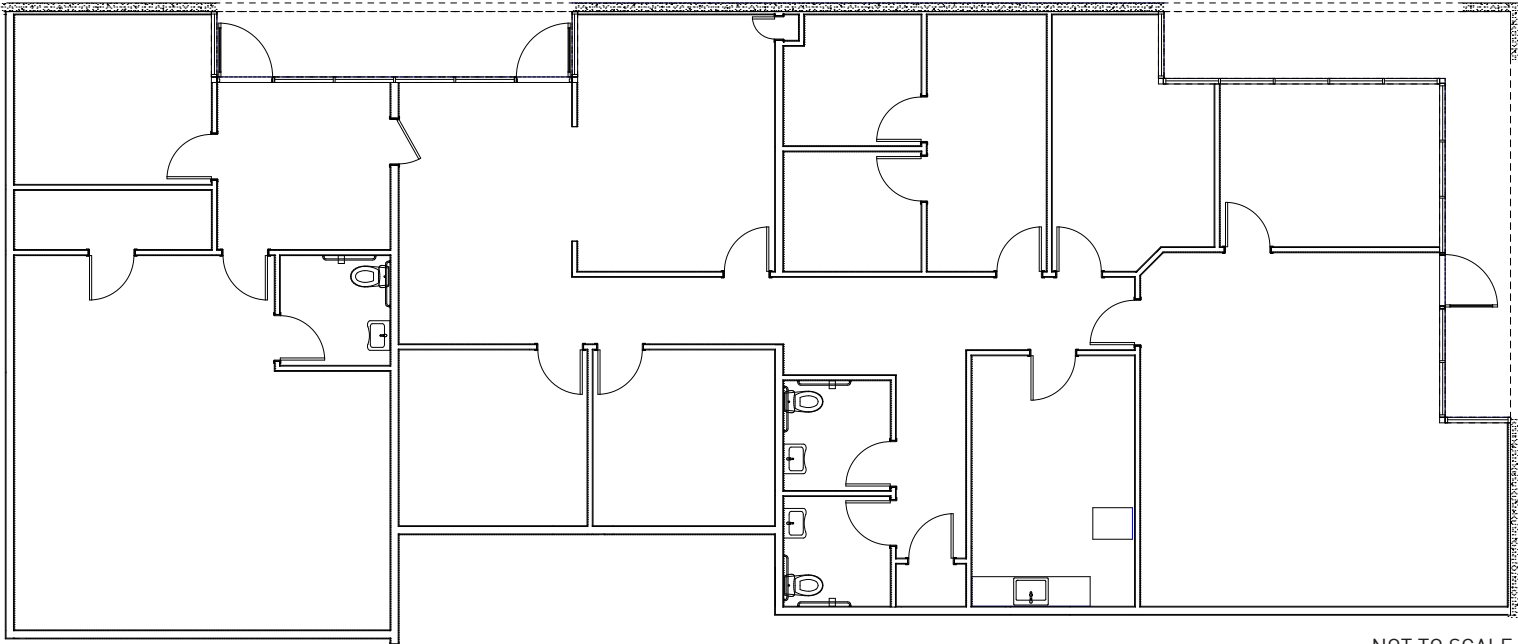


- Flex Industrial and Office Units for Lease
- Great Location in the Market Street Area of Ventura
- Ample Surface Parking
- Walking Distance to retail and Restaurant Amenities
- Easy Access to Ventura 101 Freeway



SUITE	SF	RATE PSF
UNIT B	4,048	\$1.15 MG

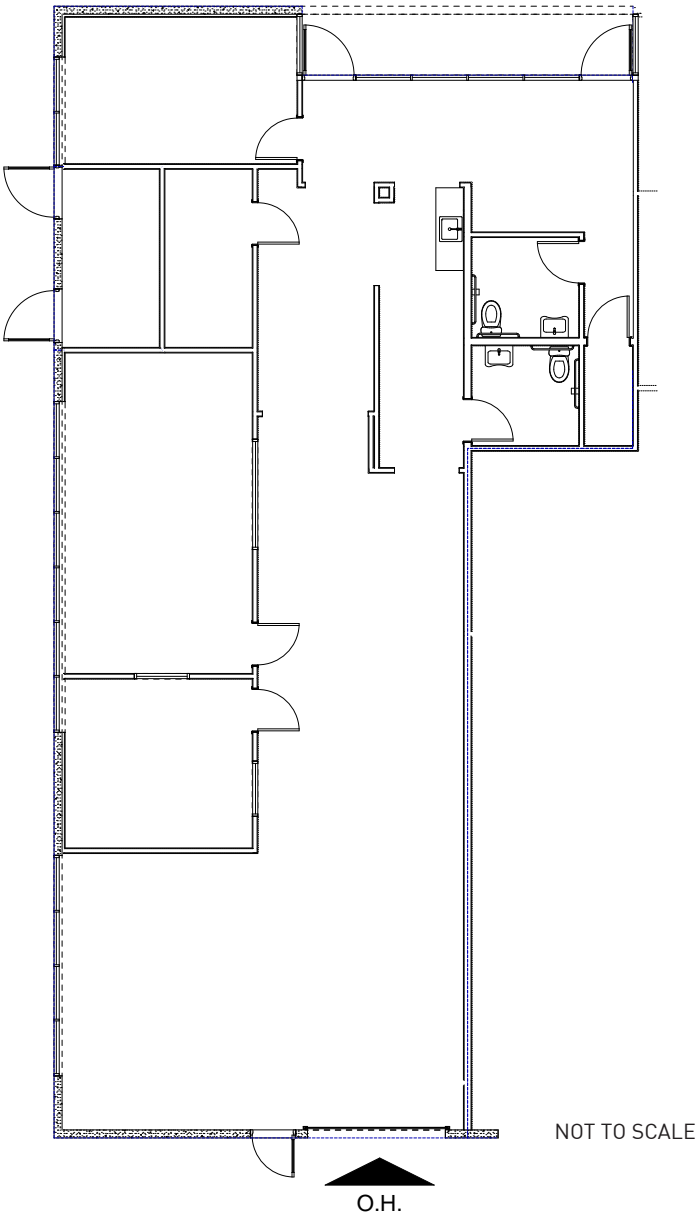




NOT TO SCALE

SUITE	SF	RATE PSF
UNIT D	3,732	\$1.40 MG
Available October 1, 2020		

FLOOR PLAN



SUITE	SF	RATE PSF
UNIT H	2,623	\$1.40 MG





David Kim

Principal

805.626.1234

dkim@lee-re.com

Lic # 01483179

Grant Harris

Principal

805.626.1212

gharris@lee-re.com

Lic #01029619



COMMERCIAL REAL ESTATE SERVICES

Lee & Associates® - LA North/Ventura, Inc.

Corporate ID #01191898

A Member of the Lee & Associates Group of Companies

1000 Town Center Drive, Suite 310

Oxnard, CA 93036

805.626.1200 | 805.413.7000

www.lee-associates.com

No warranty or representation is made to the accuracy of the foregoing information. Terms of sale or lease and availability are subject to change or withdrawal without notice.