

Professional Park North

5011 N 26th Street, Lincoln, NE



GREENLEAF
COMMERCIAL REAL ESTATE

FOR SALE



PROPERTY DETAILS

Buildable SF:	6,000 SF
Price:	\$175,000
Lot Size:	0.44 Acres
Zoning:	O-3
Market:	Lincoln
Submarket:	NW

HIGHLIGHTS

- Prime office pad site that is ready to build on.
- Use permit allows a (max) 6,000 Sq. Ft. office building.
- Association oversees common area maintenance such as lawn care, snow removal, etc.
- This site is situated in nice office & retail area in north Lincoln with close proximity to I-80 & other major highways.
- Neighboring businesses include: HyVee, Sam's Club, Walmart & others.
- Close to restaurants, hotels, & other local amenities.

GREENLEAF COMMERCIAL REAL ESTATE
402-467-2525
300 N 44th St, Ste 112
Lincoln, NE 68503
greenleafproperties.com

Donald Linscott, CCIM, SIOR
(402) 525-7417
don@greenleafcommercial.com

Brett Harris, CCIM
(402) 429-3114
brett@greenleafcommercial.com

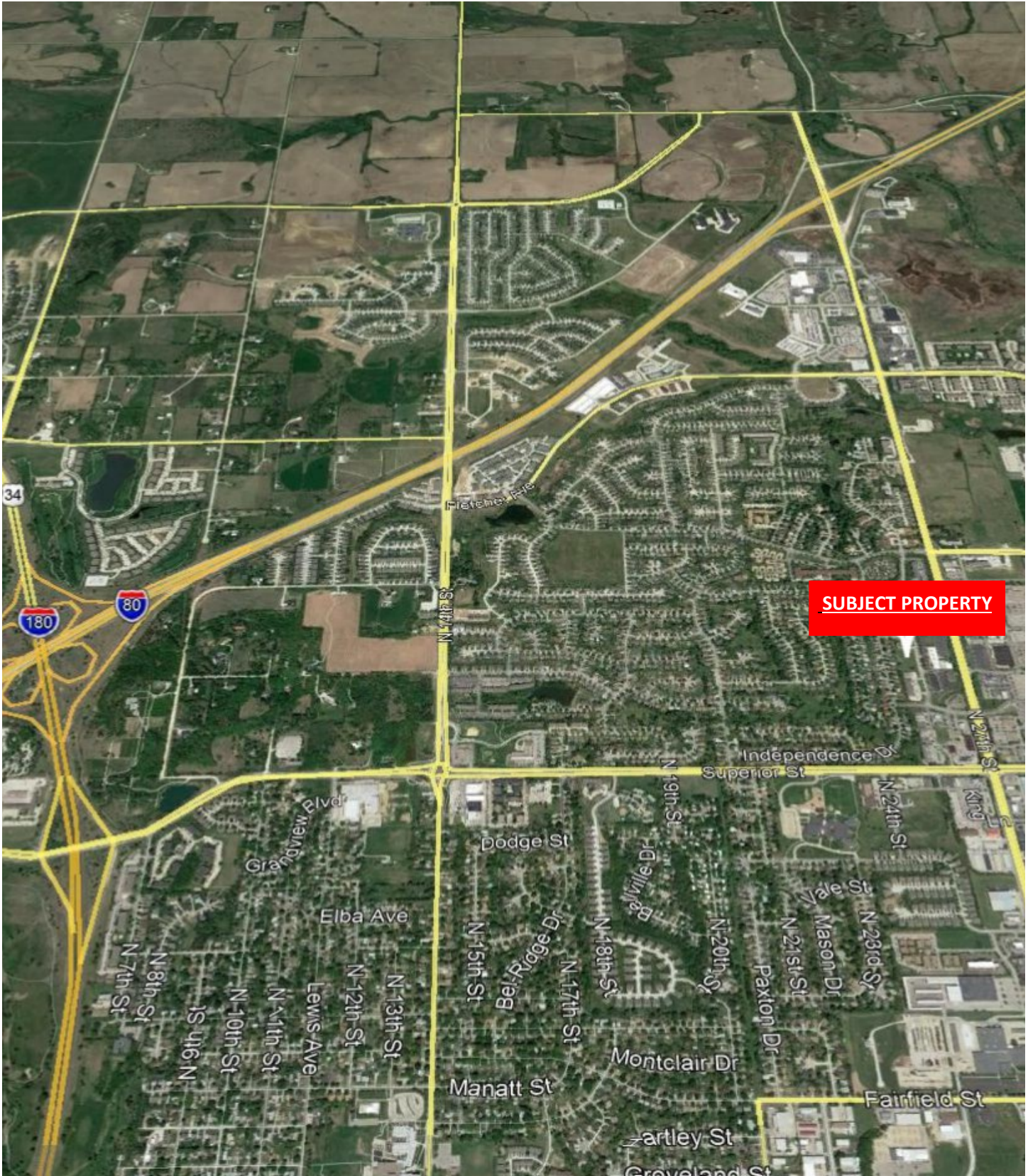
This information has been secured from sources we believe to be reliable, but we make no representations nor warranties, express nor implied as to the accuracy of the information. References to square footage are approximate. Recipient must verify the information and bears all risks for any inaccuracies.

Professional Park North

5011 N 26th Street, Lincoln, NE



GREENLEAF
COMMERCIAL REAL ESTATE



GREENLEAF COMMERCIAL REAL ESTATE

402-467-2525
300 N 44th St, Ste 112
Lincoln, NE 68503
greenleafproperties.com

Donald Linscott, CCIM, SIOR
(402) 525-7417
don@greenleafcommercial.com

Brett Harris, CCIM
(402) 429-3114
brett@greenleafcommercial.com