

AVAILABLE

COLLINS SQUARE

HWY 78 & BERLIN G MYERS PKWY SUMMERVILLE, SC 29483

OUR PARCEL FOR SALE



LOCATION

Co-tenants:



OFFERED BY



(843) 856-4600
www.belklucy.com

Blair Belk, CCIM
 blair.belk@belklucy.com
 (843) 606-5449 — direct office
 (843) 709-9292 — mobile

AND

Trey Lucy
 trey.lucy@belklucy.com
 (843) 606-5455 — direct office
 (843) 566-2867 — mobile

PROPERTY DESCRIPTION

Belk | Lucy is pleased to present the exclusive listing for Collins Square, which is a recently revitalized shopping center located in the heart of Summerville, SC. Ideally positioned at the intersection of US 78 and Berlin G. Myers Parkway, this attractive retail plaza offers exceptional visibility and ample signage opportunities. Anchored by Palmetto State Armory, co-tenants include Planet Fitness, Harley Davidson, Red Bowl, US Army Recruiting, and Summerville Pediatric Dentistry and Orthodontics. This is an excellent opportunity to join other successful retailers in the area.

AREA DESCRIPTION

The town of Summerville is situated mostly in Dorchester County and is part of the 745,000-person Charleston, SC MSA. Summerville is a burgeoning community with a strong local economy, beautifully planned neighborhoods, excellent schools, rich history, and plenty of southern hospitality. In the past thirty years, the population of Summerville has increased exponentially as families, business people, and military personnel continue to flock to charming city.



PROPERTY INFORMATION



AVAILABILITIES

Outparcel	1.41 ac	\$875,000/ac
-----------	---------	--------------

DEMOGRAPHICS (5-MILE)

Population	129,475
Households	47,819
Avg. HH Income	\$66,070

OFFERED BY



(843) 856-4600
www.belklucy.com

Blair Belk, CCIM

blair.belk@belklucy.com

(843) 606-5449 — direct office

(843) 709-9292 — mobile

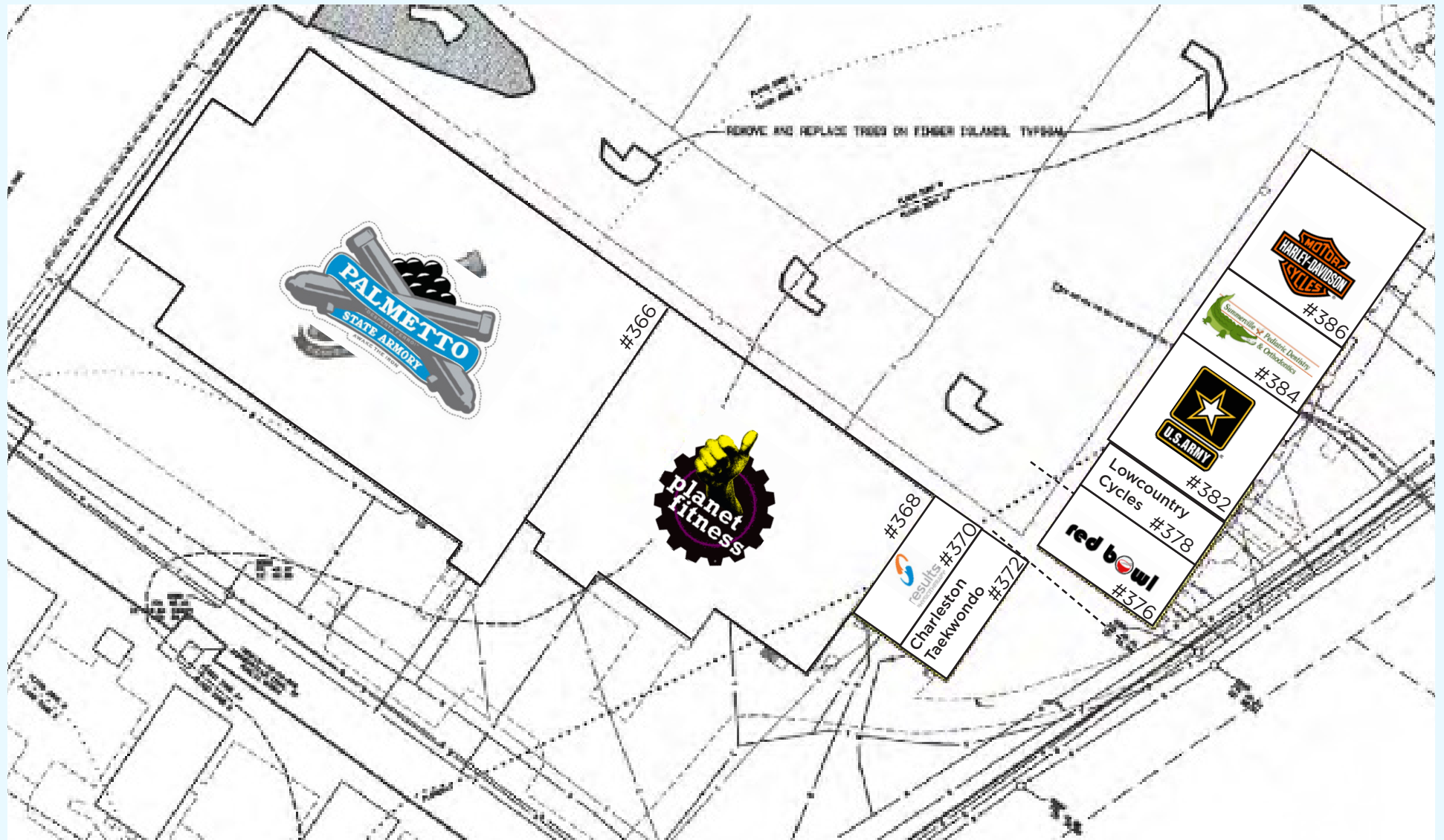
Trey Lucy

trey.lucy@belklucy.com

AND (843) 606-5455 — direct office

(843) 566-2867 — mobile

SITE PLAN



OFFERED BY



(843) 856-4600
www.belklucy.com

Blair Belk, CCIM

blair.belk@belklucy.com

(843) 606-5449 — direct office

(843) 709-9292 — mobile

Trey Lucy

trey.lucy@belklucy.com

AND (843) 606-5455 — direct office

(843) 566-2867 — mobile



**OUTPARCEL:
1.41 AC**

OFFERED BY



(843) 856-4600
www.belklucy.com

Blair Belk, CCIM

blair.belk@belklucy.com

(843) 606-5449 — direct office

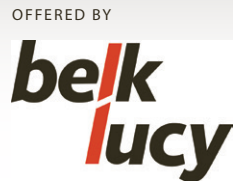
(843) 709-9292 — mobile

Trey Lucy

trey.lucy@belklucy.com

AND (843) 606-5455 — direct office

(843) 566-2867 — mobile



(843) 856-4600
www.belklucy.com

Blair Belk, CCIM
blair.belk@belklucy.com
(843) 606-5449 — direct office
(843) 709-9292 — mobile

Trey Lucy
trey.lucy@belklucy.com
AND (843) 606-5455 — direct office
(843) 566-2867 — mobile