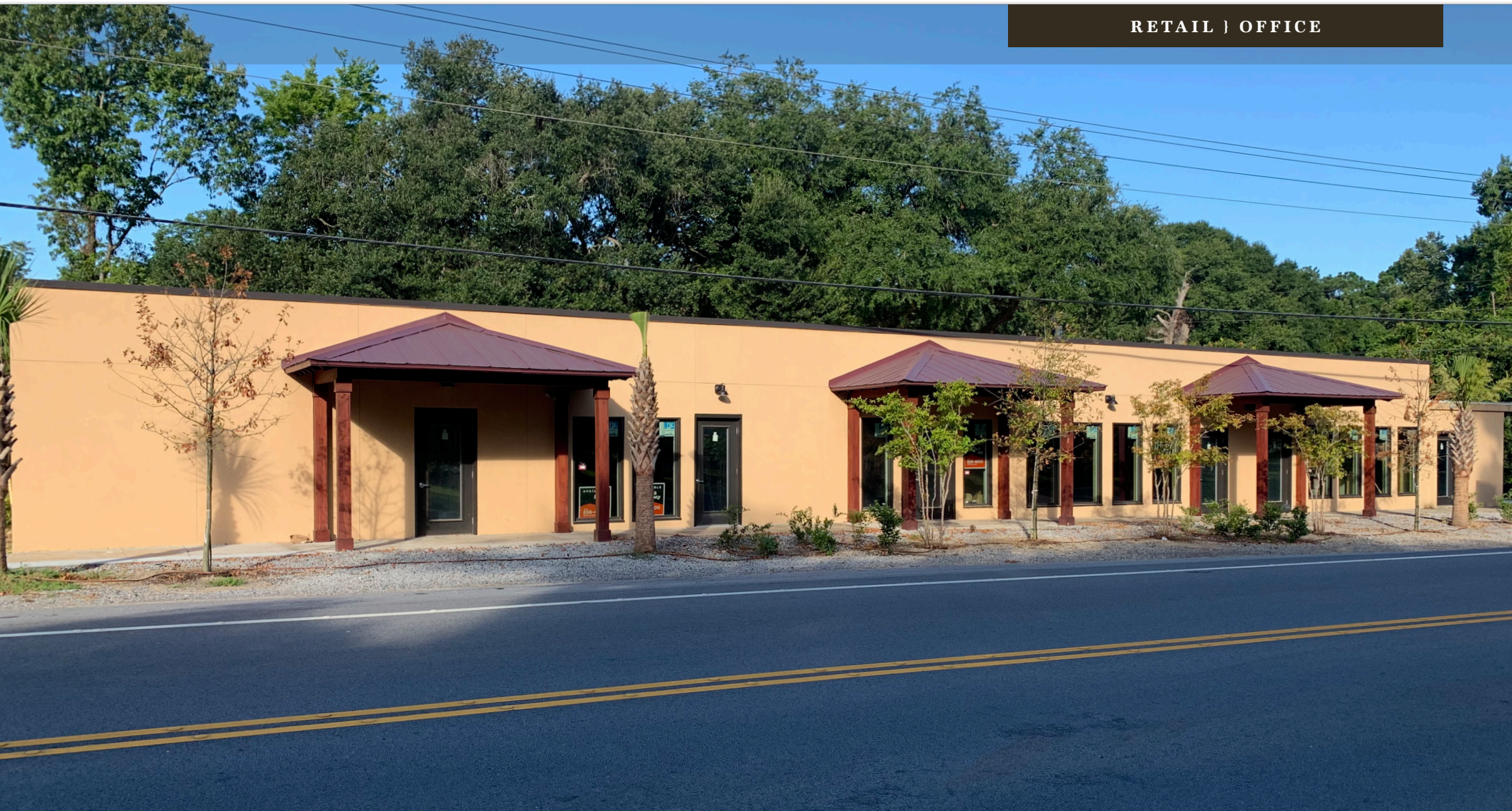


AVAILABLE - FOR LEASE 2052 RIVER ROAD

JOHNS ISLAND, SC 29455

RETAIL | OFFICE



Nearby Retailers



DOLLAR GENERAL

OFFERED BY



(843) 856-4600  
www.belklucy.com

Trey Lucy  
trey.lucy@belklucy.com

(843) 606-5455 — direct office  
(843) 566-2867 — mobile

Chris Dion  
chris.dion@belklucy.com

(843) 872-9743 — direct office  
(864) 918-0409 — mobile

AND

Blair Belk, CCIM  
blair.belk@belklucy.com  
(843) 606-5449 — direct office  
(843) 709-9292 — mobile

PROPERTY INFORMATION

**PROPERTY DESCRIPTION**

Belk | Lucy is pleased to present the exclusive listing for 2052 River Road. Situated in the heart of Johns Island, this property is located on well-travelled River Road in close proximity to Maybank Highway. Offering convenient access and excellent visibility, this is a great opportunity for a retail or office user looking for affordable space in the Johns Island market. Completely redeveloped, this project is outfitted with 3-phase power and is ready for delivery.

**AREA DESCRIPTION**

Johns Island is South Carolina's largest island and is situated to the southwest of Charleston proper. Bordered by the islands of James, Kiawah, Wadmalaw, Seabrook, Edisto, and Folly Beach, this Charleston county town is home to over 20,000 permanent residents. Known for its unspoiled natural beauty and rich farming history, people flock to this charming lowcountry town for its tranquility, outdoor activities, and close proximity to downtown Charleston. This dynamic community has become one of the fastest-growing Charleston municipalities in recent years, with an abundance of new residential communities being built that take advantage of its picturesque setting.



TERMS AND CONDITIONS		
Suite D	± 1,250 sf	\$ 20.00/sf MG

DEMOGRAPHICS (5-MILE)	
Population	64,695
Households	28,710
Avg. HH Income	\$69,587

OFFERED BY



(843) 856-4600  
www.belklucy.com

Trey Lucy  
trey.lucy@belklucy.com  
(843) 606-5455 — direct office  
(843) 566-2867 — mobile

Chris Dion  
chris.dion@belklucy.com  
(843) 872-9743 — direct office  
(864) 918-0409 — mobile

Blair Belk, CCIM  
AND blair.belk@belklucy.com  
(843) 606-5449 — direct office  
(843) 709-9292 — mobile

