



4095 E. Pony Express Pkwy

Eagle Mountain, Utah 84005

NAIExcel

COMMERCIAL REAL ESTATE SERVICES, WORLDWIDE

2901 Ashton Blvd. Ste 102
Lehi, Utah 84043

801.341.0900 | naixel.com

Offered By:

Jay Blacker

cell: 801.960.5559
email: jblacker@naixel.com

Stan Perkins

cell: 435.632.2834
email: sperkins@naixel.com

Zach Hatch

direct: 801.341.1991
email: zhatch@naixel.com

Content

- 04 Executive Summary
- 06 Maps
- 09 Photos
- 12 Future Transportation
- 13 Demographics & Traffic Counts
- 14 Area Information



FOR LEASE | OFFICE-RETAIL



AFFILIATED BUSINESS DISCLOSURE & CONFIDENTIALITY AGREEMENT

AFFILIATED BUSINESS DISCLOSURE

NAI EXCEL operates with many subsidiaries and affiliates in a broad range of commercial real estate businesses including, but not limited to, brokerage services, property management, GIS Services, and development. In all instances, NAI EXCEL will act in the best interest of the client(s) it represents in the transaction described in this Memorandum and will not act in concert with or otherwise conduct its business in a way that benefits any affiliate to the detriment of any other offeror or prospective offeror, but rather will conduct its business in a manner consistent with the law and any fiduciary duties owed to the client(s) it represents in the transaction described in this Memorandum.

CONFIDENTIALITY AGREEMENT

This offering contains selected financial information pertaining to the Property and does not purport to be a representation of the current financial state of the Property, to be all-inclusive, or to contain all or part of the information which prospective investors may require to evaluate a purchase of real property. All financial projections and information are provided for general reference purposes only and have been gathered from sources deemed reliable. Certain assumptions have been made relating to the general economy, market conditions, competition and other factors beyond the control of seller and NAI EXCEL.

Therefore, all projections, assumptions and other information provided and made herein are subject to material variation. All references to acreages, square footages, and other measurements are approximations. Additional information and an opportunity to inspect the Property will be made available to qualified prospective purchasers. In this Memorandum, certain documents, including leases and other materials, are described in summary form. These summaries do not purport to be complete nor necessarily accurate descriptions of the full agreements referenced herein. Interested parties are expected to review and confirm all such summaries and other documents of whatever nature independently and not rely on the contents of this Memorandum in any manner.

Neither the seller or NAI EXCEL, nor any of their respective directors, officers, Affiliates or representatives make any representation or warranty, expressed or implied, as to the accuracy or completeness of this Offering Memorandum or any of its contents, and no legal commitment or obligation shall arise by reason of your receipt of this Memorandum or use of its contents; Purchasers are to rely solely on its investigations and inspections of the Property in evaluating a possible purchase of the real property.

The seller expressly reserves the right, at its sole discretion, to reject any or all offers to purchase the Property, and/or to terminate discussions with any entity at any time, with or without notice, which may

arise as a result of review of this Memorandum.

By receipt of this Memorandum, you agree that this Memorandum and its contents are confidential in nature, that you will hold and treat such in the strictest confidence and that you will not disclose this Memorandum, or any of its contents, to any other entity without the prior written authorization of the seller or NAI EXCEL.

If after reviewing this Memorandum, you have no further interest in purchasing the Property, please delete or return this Memorandum to NAI EXCEL.

Executive Summary

ADDRESS	4095 E. Pony Express Pkwy Eagle Mountain, Utah
NNN	\$5.50 SF
BUILDING SIZE SQFT	Office 1,800 – 4,800± Retail 10,000±
ZONING	Community Commercial

- Only Grocery store development in Eagle Mountain
- Retail and Office Space Available
- Great Location for restaurants, retail, service providers and offices

OFFERING TERMS

LEASE PRICE

\$20 OFFICE | \$19.50 RETAIL

FOR LEASE | OFFICE-RETAIL

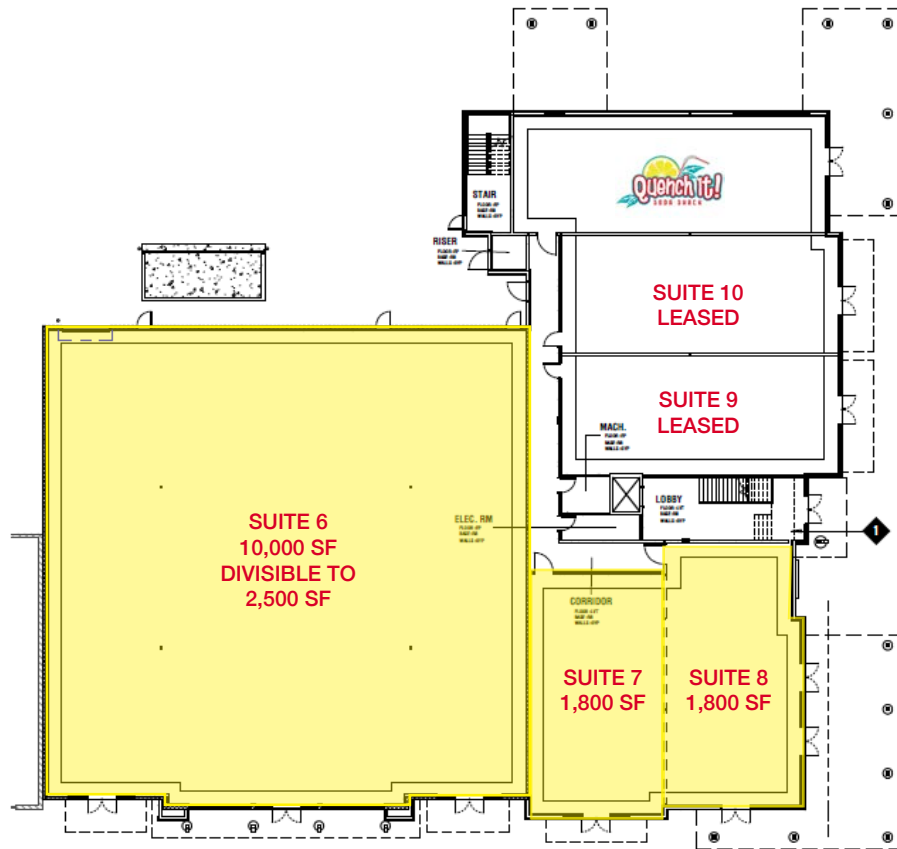
FOR MORE INFORMATION
<http://helloarti.com/view/36206>
 TEXT EAGLE TO 39200



Floorplans

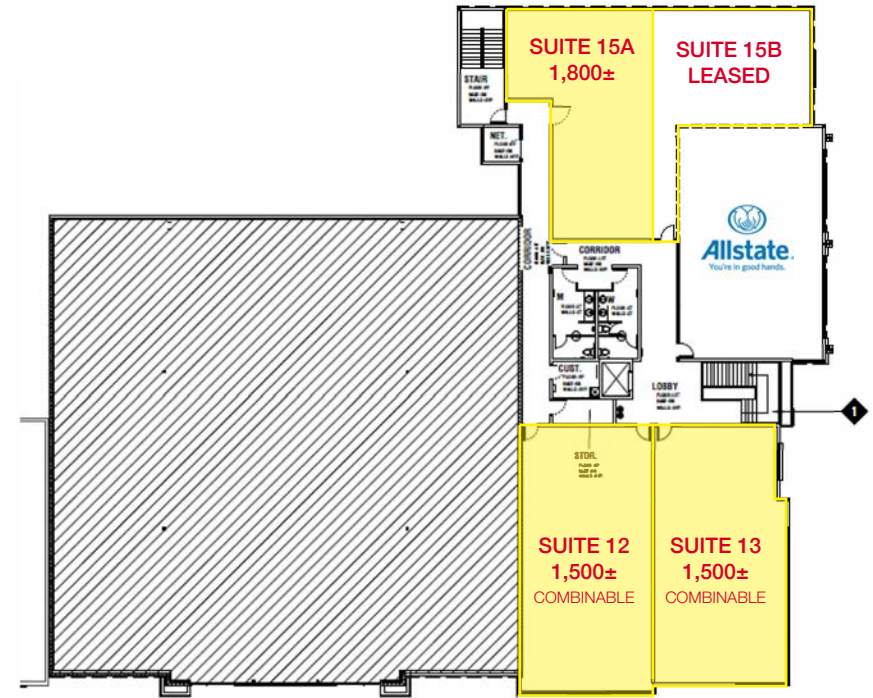
FOR LEASE | OFFICE-RETAIL

RETAIL



A1 LEVEL 1 FINISH FLOOR
1/16" = 1'-0"

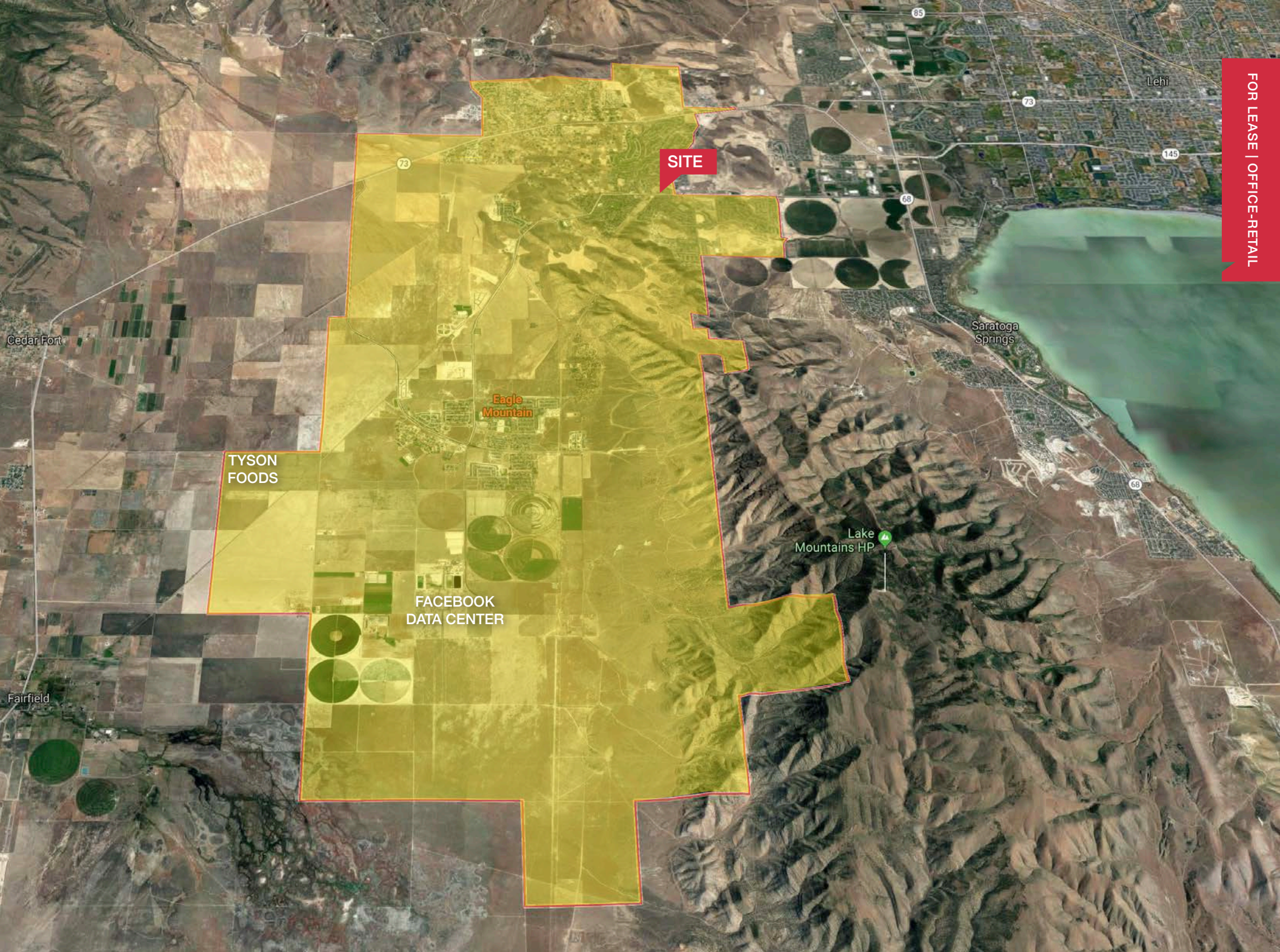
OFFICE



A4 LEVEL 2 FINISH FLOOR
1/16" = 1'-0"

Maps





FOR LEASE | OFFICE-RETAIL

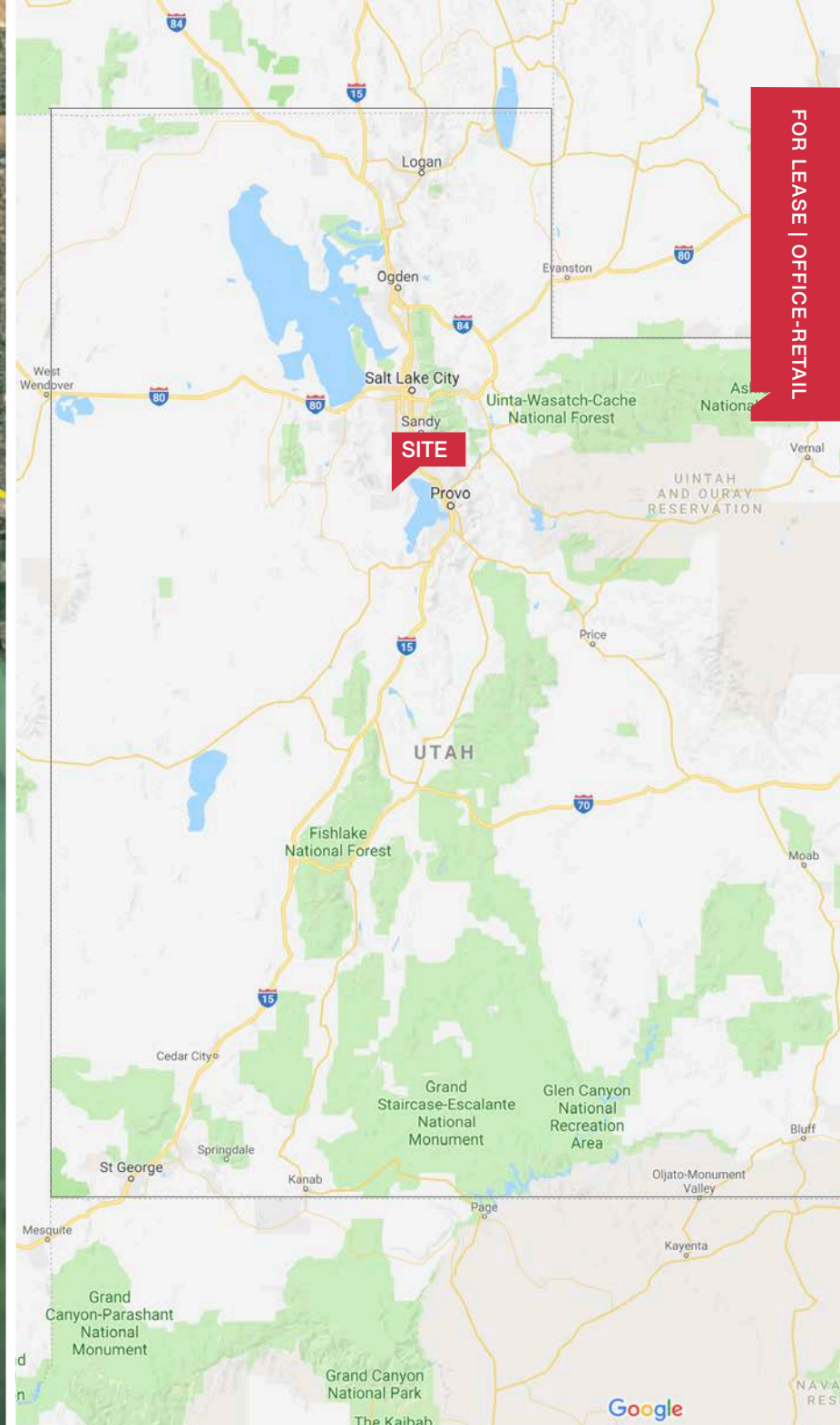
SITE

**TYSON
FOODS**

**Eagle
Mountain**

**FACEBOOK
DATA CENTER**

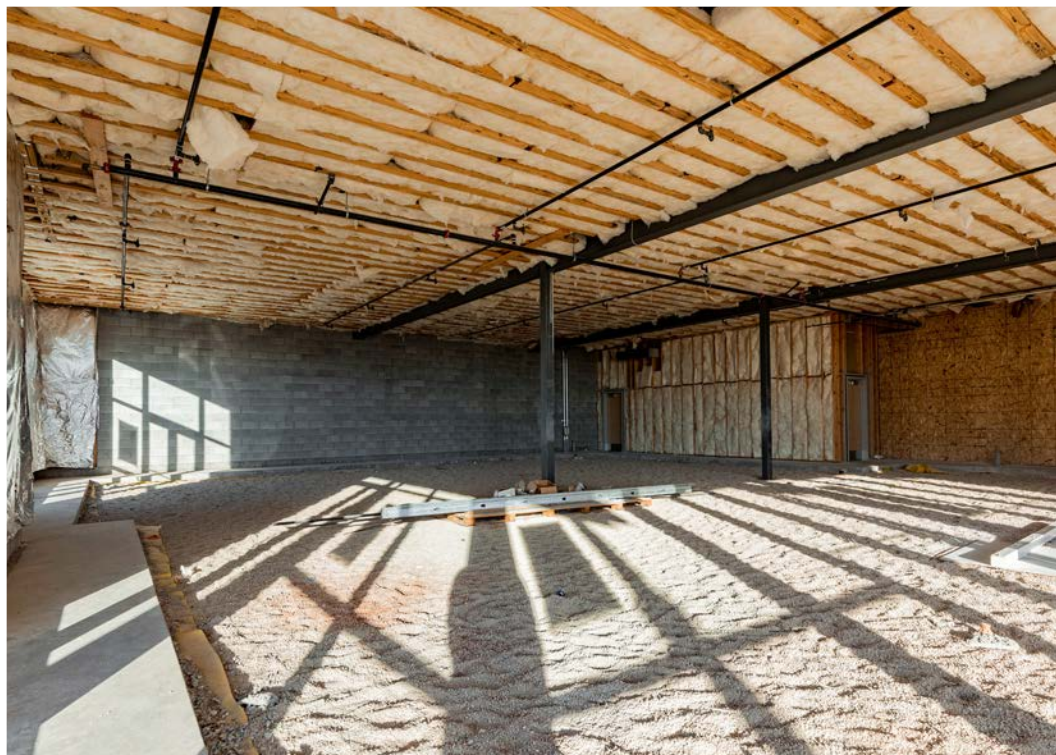
Lake
Mountains HP

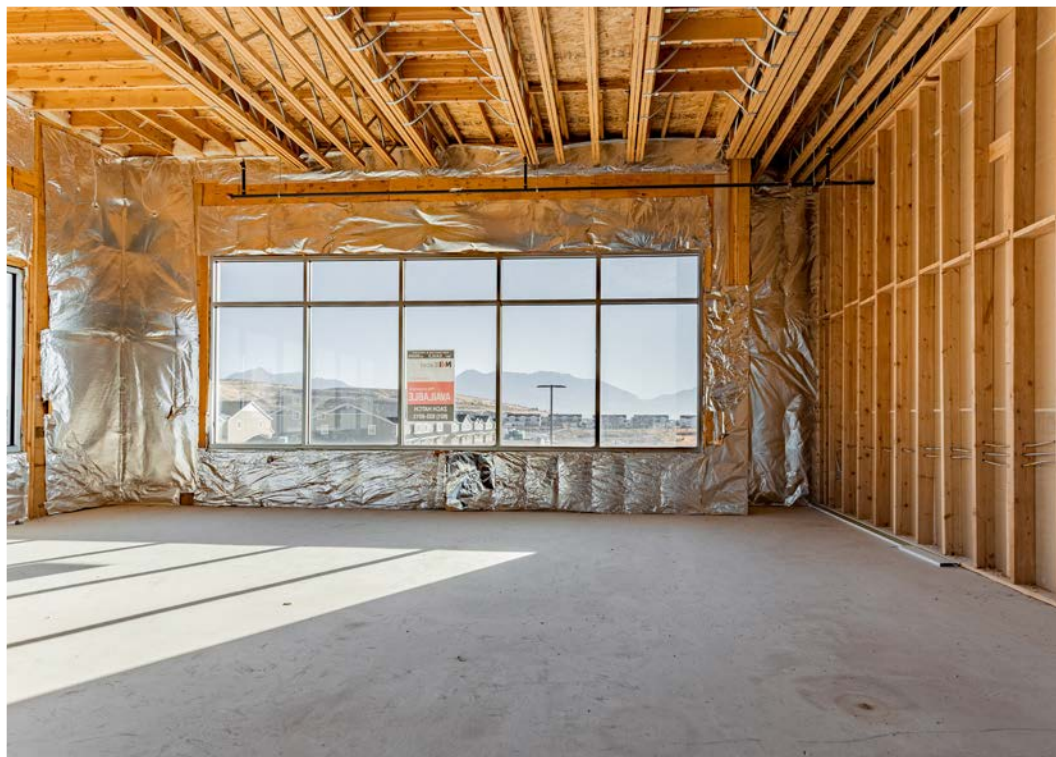
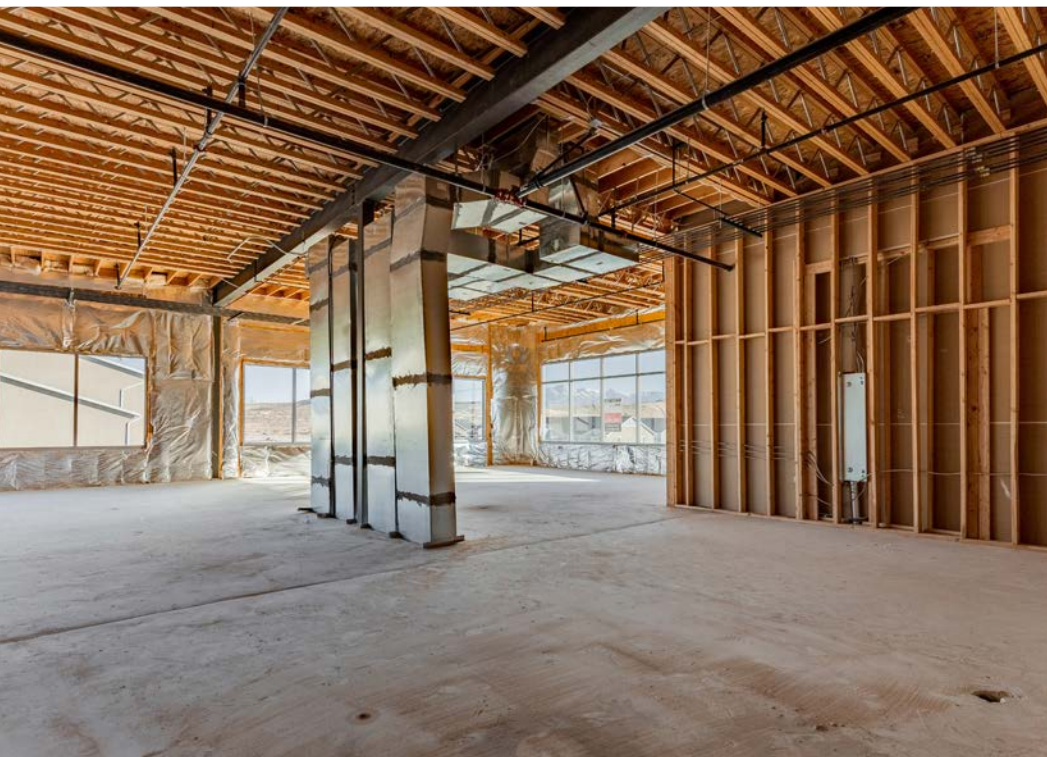


RETAIL



FOR LEASE | OFFICE-RETAIL





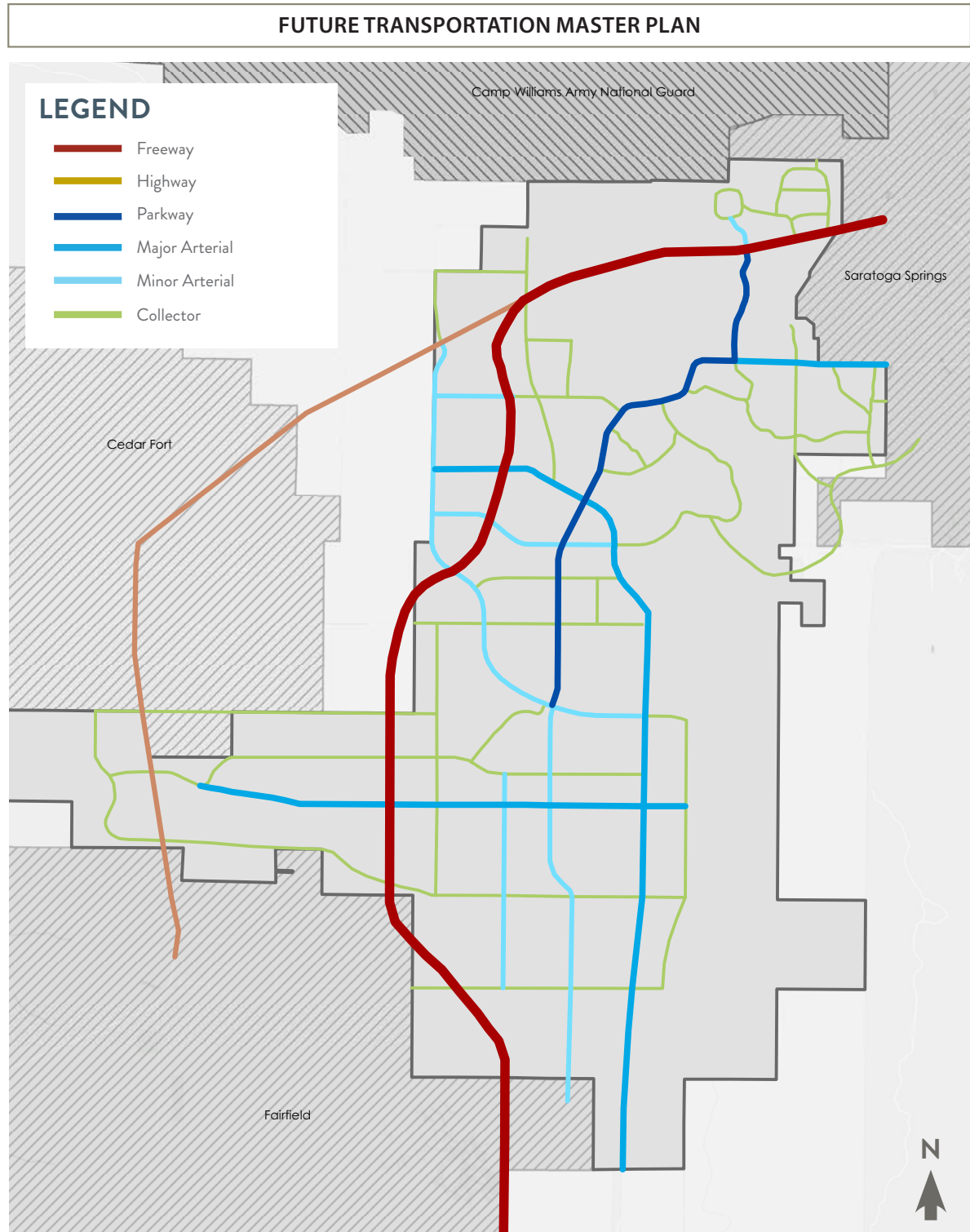
DRONE



FOR LEASE | OFFICE-RETAIL



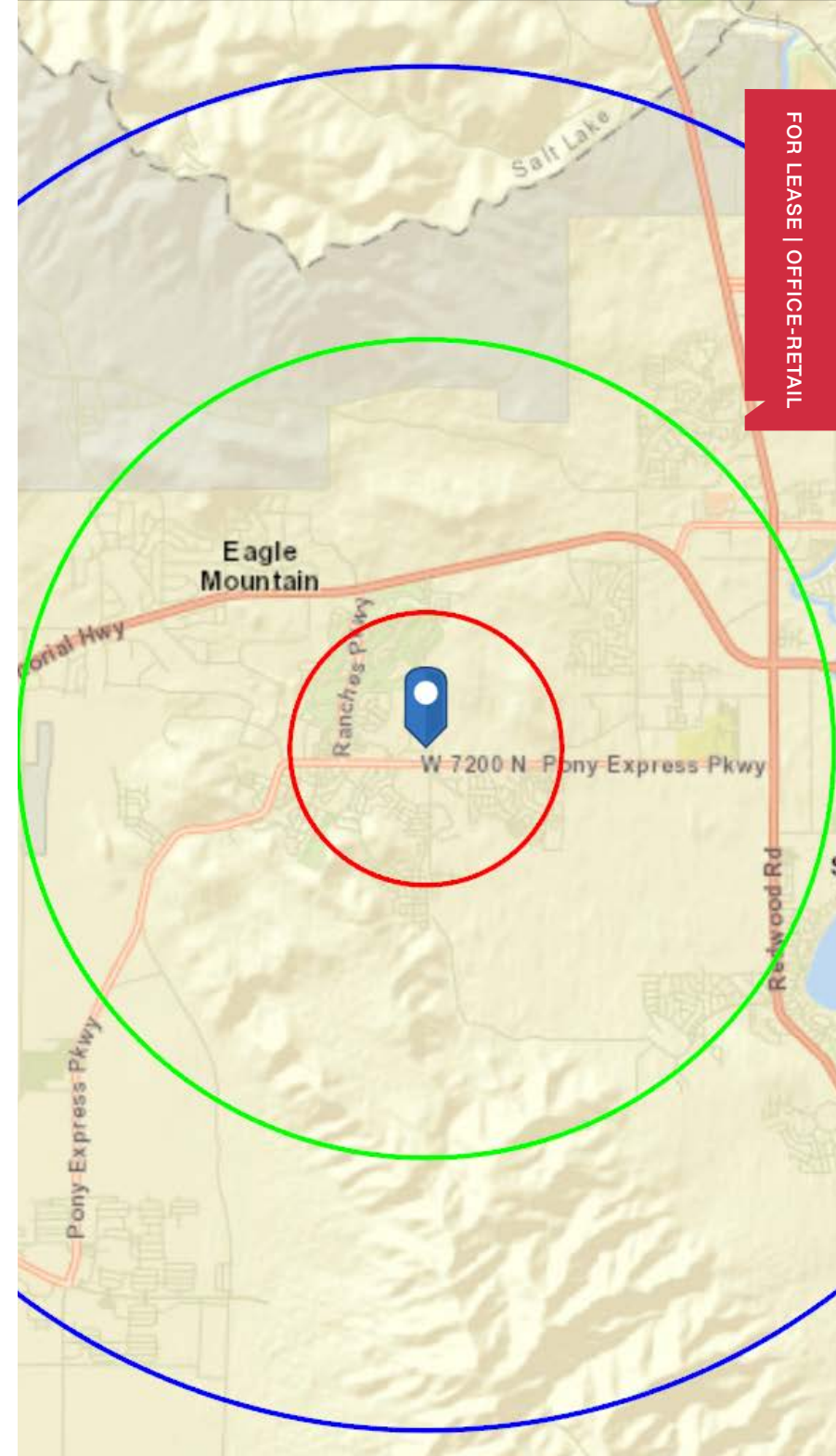
Future Transportation



FOR LEASE | OFFICE-RETAIL

Demographics

	1 Mile	3 Mile	5 Mile
Population	13,631	32,276	65,369
Average Household Size	4.06	4.24	4.23
Total Businesses	66	226	514
Total Employees	488	1,858	4,963
Average Household Income	\$83,716	\$95,822	\$93,566
Median Household Income	\$83,716	\$95,822	\$77,975
Per Capita Income	\$19,961	\$22,698	\$22,237



Area Information

Eagle Mountain, Utah

Eagle Mountain City is a master-planned community that captures a neighborhood feel in the midst of Utah's urban corridor. Since its incorporation in December 1996, the city's population has grown from 250 residents to a projected 40,000 by the end of 2019, becoming one of the state's fastest growing communities. Eagle Mountain residents enjoy quiet, safe neighborhoods with plenty of open space where families can play and spend time together.

- Elevation: 4,882'
- Population | 2017: 32,204

Things to Do

- Saratoga Hot Springs
- Inlet Park Hot Springs
- Soldiers Pass
- Camp Floyd State Park
- Cory Wride Memorial Park



FOR LEASE | OFFICE-RETAIL

> VIEW MARKET STATISTICS FOR OFFICE, RETAIL, INDUSTRIAL & MULTIFAMILY AT <https://excelcres.com/market-research/>



COMMERCIAL REAL ESTATE SERVICES, WORLDWIDE

2901 Ashton Blvd. Ste 102
Lehi, Utah 84043

801.341.0900 | naiexcel.com

Offered By:

Jay Blacker

cell: 801.960.5559
email: jblacker@naiexcel.com

Stan Perkins

cell: 435.632.2834
email: sperkins@naiexcel.com

Zach Hatch

direct: 801.341.1991
email: zhatch@naiexcel.com