

6500 CREEDMOOR ROAD

Raleigh, NC 27613



TRI PROPERTIES

NAI Carolantic Realty



6500 CREEDMOOR ROAD

Raleigh, NC 27613

LOCATED NEAR THE INTERSECTION OF CREEDMOOR ROAD AND LYNN ROAD IN RALEIGH. NUMEROUS SURROUNDING AMENITIES

BUILDING SIZE Approximately 26,000 RSF

AVAILABLE SPACE Suite 206 - 1,163 RSF - Available 8/1/21
Suite 214 - 995 RSF*
Suite 216 - 2,388 RSF*
**Can be combined for 3,383 contiguous RSF*



RENTAL RATE \$22.50 PSF, Net of electricity and janitorial

FLOORS Two (2) floors

LEASE TERM Three (3) to Five (5) years

PARKING RATIO 4.5 spaces per 1,000 SF

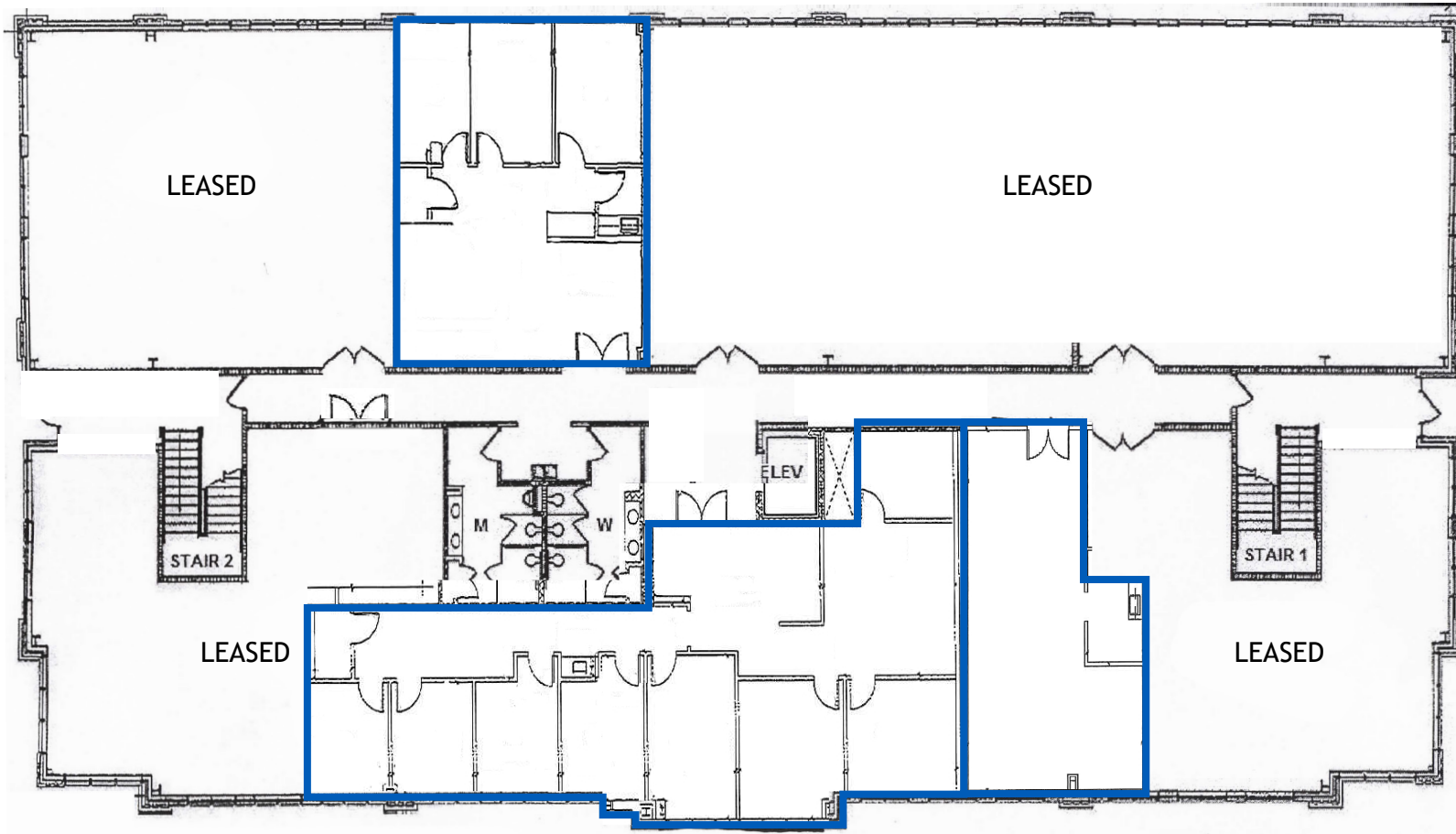
LEASING CONTACT
BECKY CAPPS | 919.281.2342 | bcapps@triprop.com
KACY COGGIN | 919.281.2353 | kcoggin@triprop.com

TRI PROPERTIES | **NAI Carolantic Realty**

6500 CREEDMOOR ROAD

Raleigh, NC 27613

Suite 206
1,163 RSF
Available 8/1/21



Suite 216
2,388 RSF

Suite 214
995 RSF

**Can be combined for 3,383 contiguous RSF*



Second (2nd) Floor

LEASING CONTACT

BECKY CAPPS | 919.281.2342 | bcapps@triprop.com

KACY COGGIN | 919.281.2353 | kcoggin@triprop.com

All information provided herein is from sources deemed reliable. However, all information is subject to verification. Tri Properties | NAI Carolantic does not independently verify nor warrant the accuracy of the information.

TRI PROPERTIES

NAI Carolantic Realty



DINING



BANKING



HOTELS



LEASING CONTACT

BECKY CAPPS | 919.281.2342 | bcapps@triprop.com

KACY COGGIN | 919.281.2353 | kcoggin@triprop.com

All information provided herein is from sources deemed reliable. However, all information is subject to verification. Tri Properties | NAI Carolantic does not independently verify nor warrant the accuracy of the information.

TRI PROPERTIES

NAI Carolantic Realty