

Land For Sale

COMMERCIAL Industrial

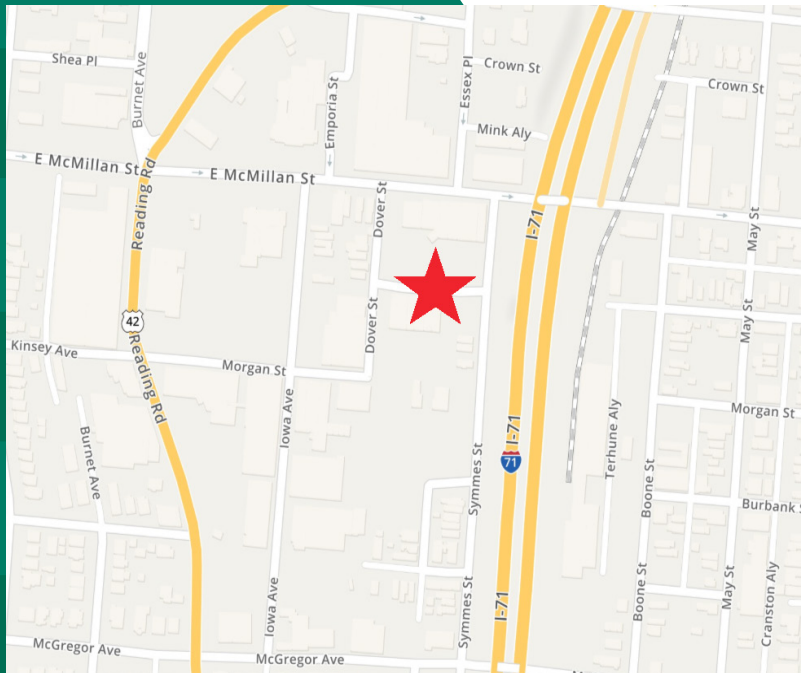


FEATURES

- **1.132 Acres**
- All utilities
- Zoning: MG (Manufacturing)
- Topography: Gently sloping
- .16 Mile to I-71
- 2.3 Miles to I-75
- 7 Miles to I-275
- Permitted uses: office, industrial, transitional housing, restaurants
- Sale price: \$950,000 (\$845,200/acre)

LOCATION

**481 Wayne Street &
2401-2419 Symmes Street
Cincinnati, OH 45206
Hamilton County**



CONTACT

Frank Torbeck, SIOR
frank.torbeck@everestrealstate.com
513/769-2505

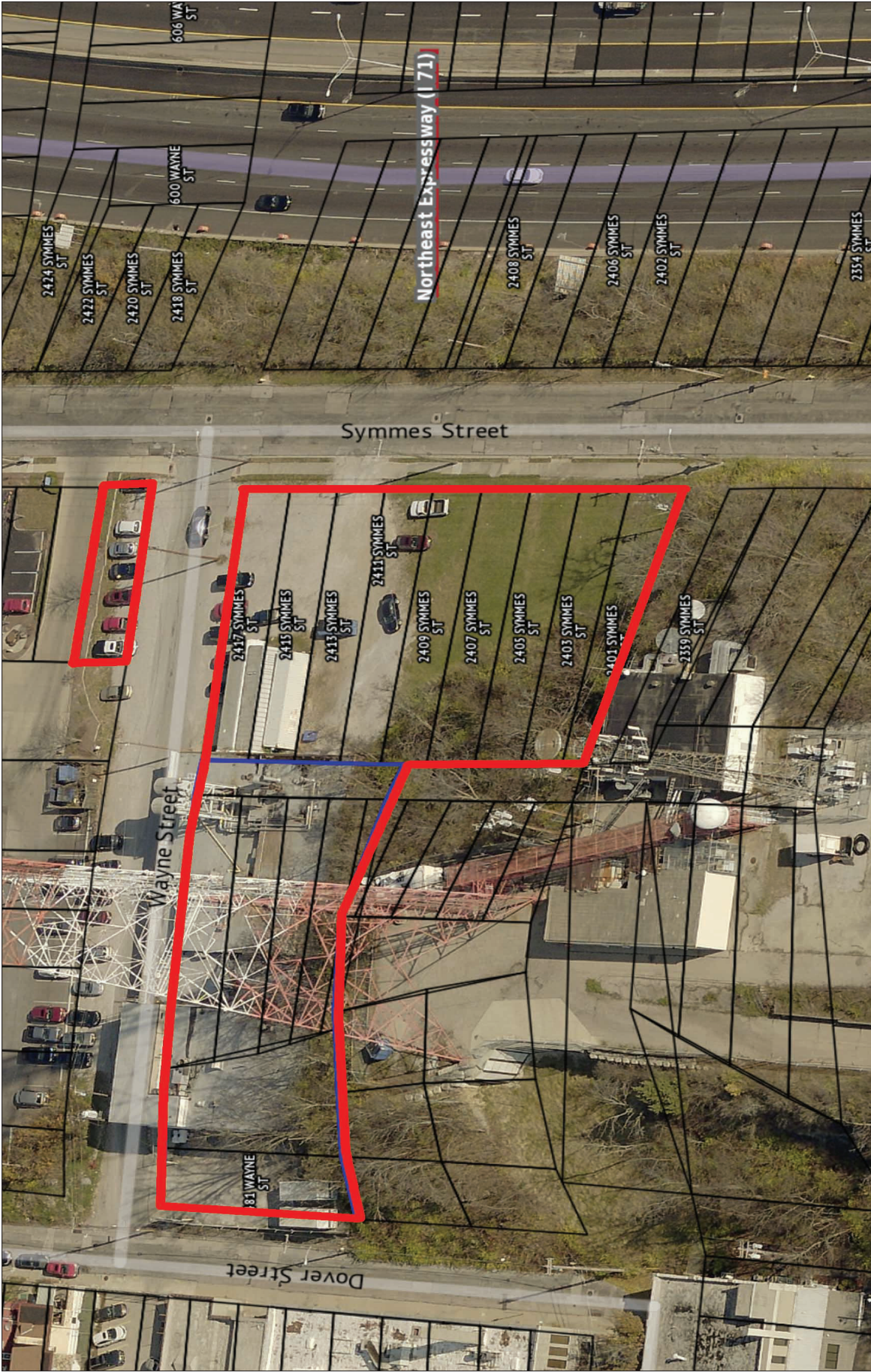
The information submitted is not guaranteed. Although obtained from reliable sources, it is subject to errors, omissions, prior sale and withdrawal from the market without notice.



COMMERCIAL REAL ESTATE SERVICES

WEB www.everestrealstate.com TEL 513-769-2500 FAX 513-769-2512

9902 Carver Road, Sycamore Office Park, Suite 105, Cincinnati, Ohio 45242



Parcel IDs: 068-0001-0263, 068-0001-0274, 068-0001-0275, 068-0001-0276, 068-0001-0277, 068-0001-0278, 068-0001-0279, 068-0001-0280, 068-0001-0281, 068-0001-0282 and 068-0001-0296