



5640 Dillard Drive

Cary, North Carolina 27518

Property Highlights

- 18,000 SF, 3-story Class A, owner occupied, office building in Crossroads
- 2,291 RSF Available on the first floor with main lobby entry!
- Red brick and stucco construction with finely appointed lobbies & common areas
- Built in 2008 and meticulously maintained with higher than typical finish quality
- Located at the corner of Dillard Dr. & Columbus Ave. next to the Holiday Inn and the Four Points by Sheraton
- Abundant parking
- Plug and play ready with furniture included



Available Spaces

Spaces	Lease Rate	Size (SF)
Suite 102	\$24.00 SF/yr	2,291

For more information

Daniel Herring

O: 919 714 7127 | C: 919 760 7822
dherring@naicarolantic.com

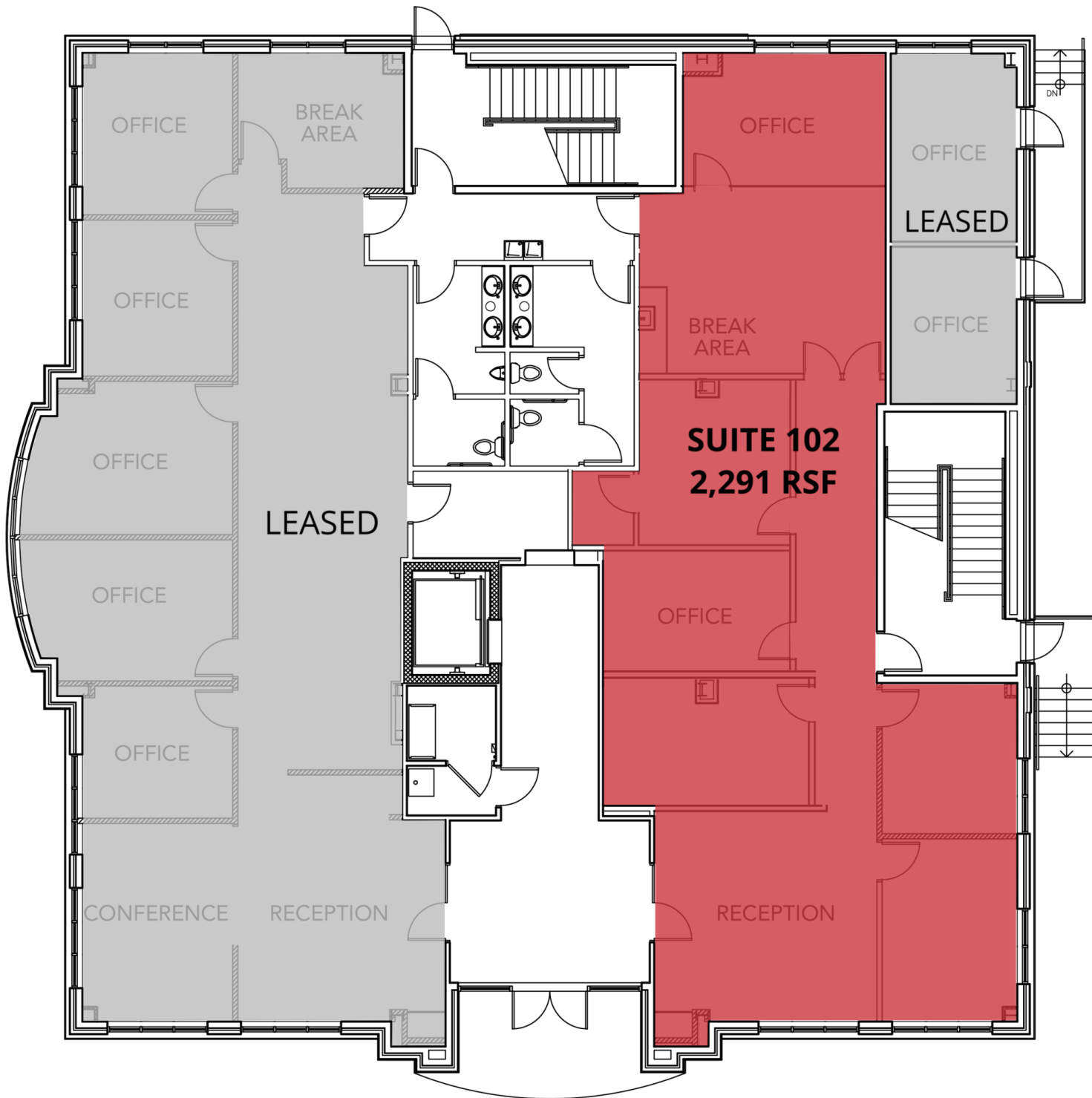
Jordan Williams, MBA

O: 919 281 2357 | C: 919 880 3077
jwilliams@naicarolantic.com

For Lease

Office

2,291 SF



For Lease

Office

2,291 SF



TRI PROPERTIES

NAI Carolantic Realty

Tri Properties | NAI Carolantic Realty, Inc. makes no warranty whatsoever with respect to the accuracy of the information contained herein or properties represented, including any (A) warranty of fitness for a particular purpose; or (B) warranty of title; whether express or implied by law, course of dealing, course of performance, usage of trade or otherwise. Projections, opinions, assumptions or estimates are provided for illustration only and do not reflect current or future performance of the property. Information is provided subject to, without notice (i) errors, omissions, change of availability, price, or other conditions, and (ii) prior sale, lease or financing or withdrawal, and special listing conditions. No warranties or representations are made as to the condition of the property or hazards contained therein, nor are any to be implied.

5121 Kingdom Way, Suite 200
Raleigh, NC 27607
919.832.0594
<https://naicarolantic.com>



For Lease
Office
 2,291 SF



Map data ©2020 Google

Tri Properties | NAI Carolantic Realty, Inc. makes no warranty whatsoever with respect to the accuracy of the information contained herein or properties represented, including any (A) warranty of fitness for a particular purpose; or (B) warranty of title; whether express or implied by law, course of dealing, course of performance, usage of trade or otherwise. Projections, opinions, assumptions or estimates are provided for illustration only and do not reflect current or future performance of the property. Information is provided subject to, without notice (i) errors, omissions, change of availability, price, or other conditions, and (ii) prior sale, lease or financing or withdrawal, and special listing conditions. No warranties or representations are made as to the condition of the property or hazards contained therein, nor are any to be implied.

5121 Kingdom Way, Suite 200
 Raleigh, NC 27607
 919.832.0594
<https://naicarolantic.com>