

TRI PROPERTIES

NAI Carolantic Realty

For Sale
Land

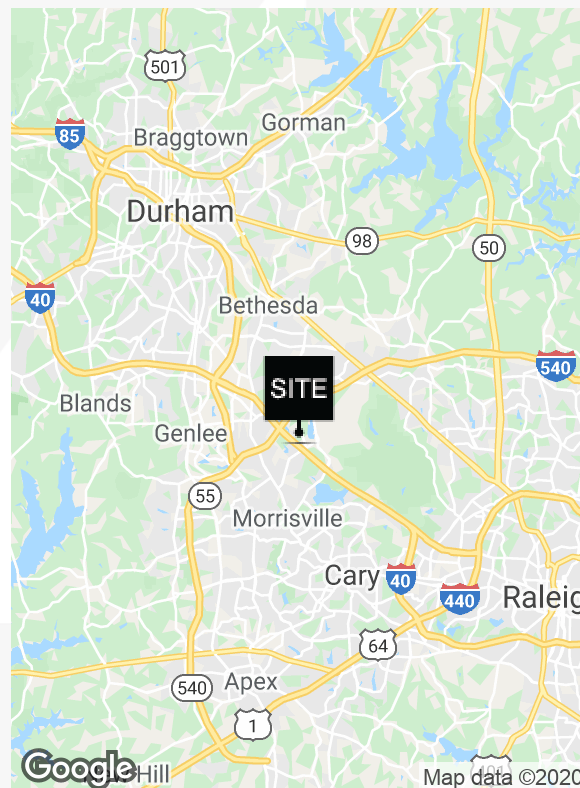


World Trade Park

World Trade Blvd.
Morrisville, North Carolina 27560

Property Highlights

- 22.96 acres total
- 11.1 acre parcel available
- Infill office, technology, and warehouse land opportunity
- 1,500 feet of frontage along I-540
- Pre-approval for buildings on many parcels
- Adjacent to RDU International Airport, Brier Creek, and Bethpage Development
- Located in Foreign Trade Zone #93
- Zoned CUD-TD by the City of Raleigh
- Sales price: \$185,000 - \$235,000/acre



For more information

Hunt Wyche

C: 919 740 4406

hwyche@naicarolantic.com

TRI PROPERTIES

NAI Carolantic Realty

Tri Properties | NAI Carolantic Realty, Inc. makes no warranty whatsoever with respect to the accuracy of the information contained herein or properties represented, including any (A) warranty of fitness for a particular purpose; or (B) warranty of title; whether express or implied by law, course of dealing, course of performance, usage of trade or otherwise. Projections, opinions, assumptions or estimates are provided for illustration only and do not reflect current or future performance of the property. Information is provided subject to, without notice (i) errors, omissions, change of availability, price, or other conditions, and (ii) prior sale, lease or financing or withdrawal, and special listing conditions. No warranties or representations are made as to the condition of the property or hazards contained therein, nor are any to be implied.

5121 Kingdom Way, Suite 200

Raleigh, NC 27607

919.832.0594

<https://naicarolantic.com>

in

For Sale Land

Location:

- I-540 1 mile
- US Hwy. 70 1 mile
- I-40 2 miles
- RDU Airport 1 mile
- Research Triangle Park 3 miles

Size:

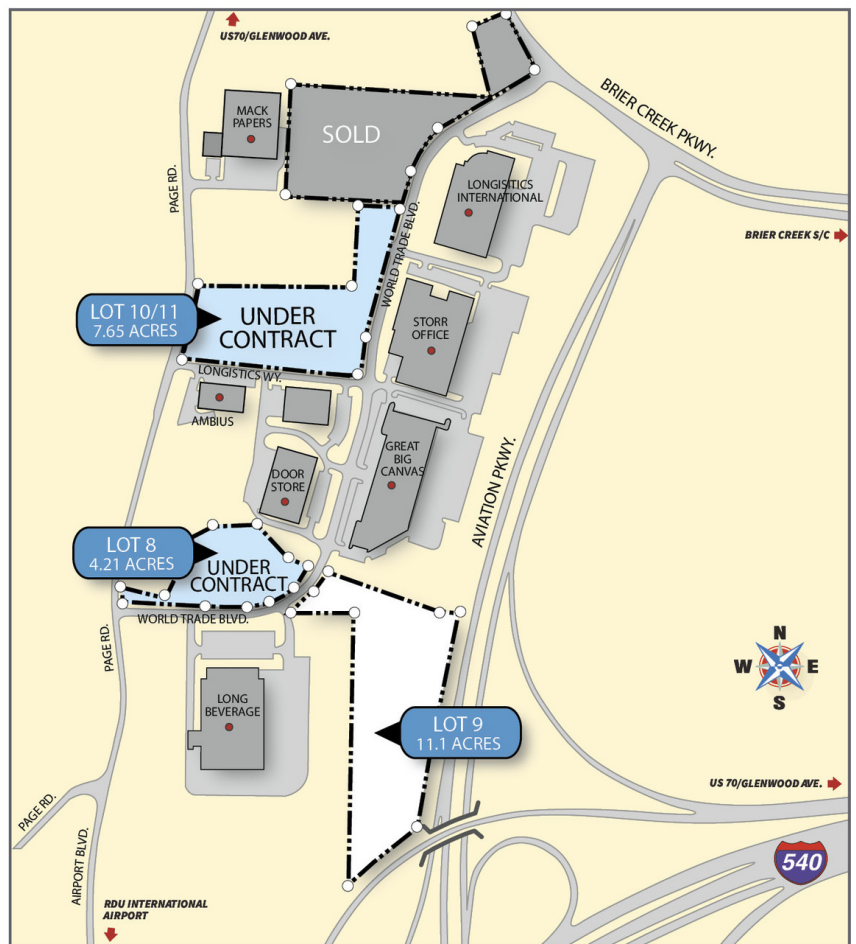
- Total 85 acres
- Longistics 120,000 SF

Special Features:

- On-site business incubator
- Longistics services available including staffing, warehousing/distributing and transportation
- On-site Foreign Trade Zone #93
- On-site training and conference rooms

Utilities/Zoning:

- Zoning: Thoroughfare District CUD (Wake)/1-2 (Durham)
- Electricity: Progress Energy
- Sewer: City of Raleigh
- Telephone: GTE



Lot	Acres	\$/Lot
8	4.21	UNDER CONTRACT
9	11.1	\$2,053,500
10-11	7.65	UNDER CONTRACT

For Sale
Land



For Sale
Land

