



Sanford, North Carolina 27330

- Approx 37.16 acres available
- Zoning: combination of R-20 and HC
- Utilities available
- Excellent potential for commercial, industrial and multifamily
- Lee County parcel numbers:
9633-79-1200-00
9633-78-8745-00
- Additional ± 14.5 acres potentially available
- Sales price: \$19,500 per acre



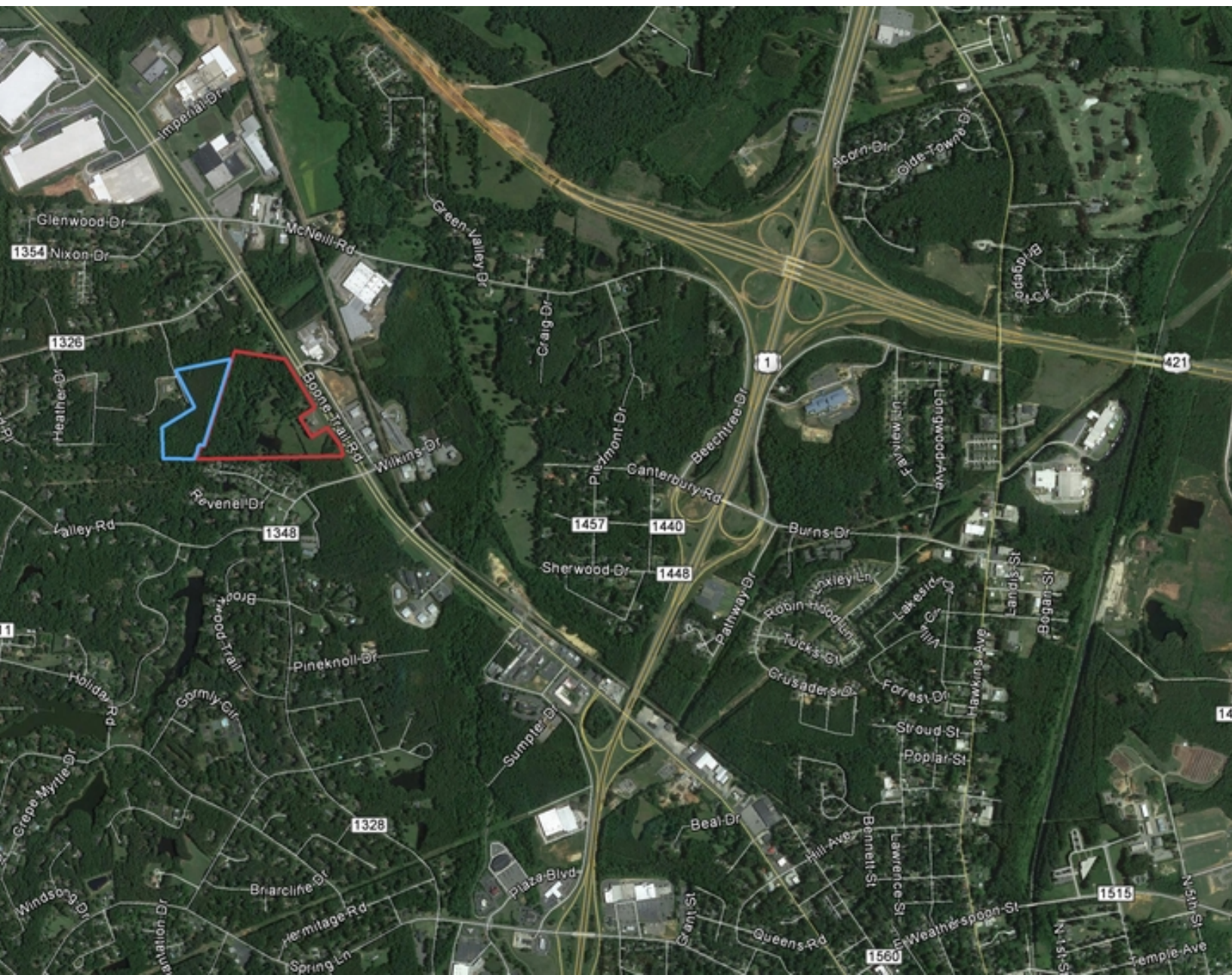
Carson Wilson

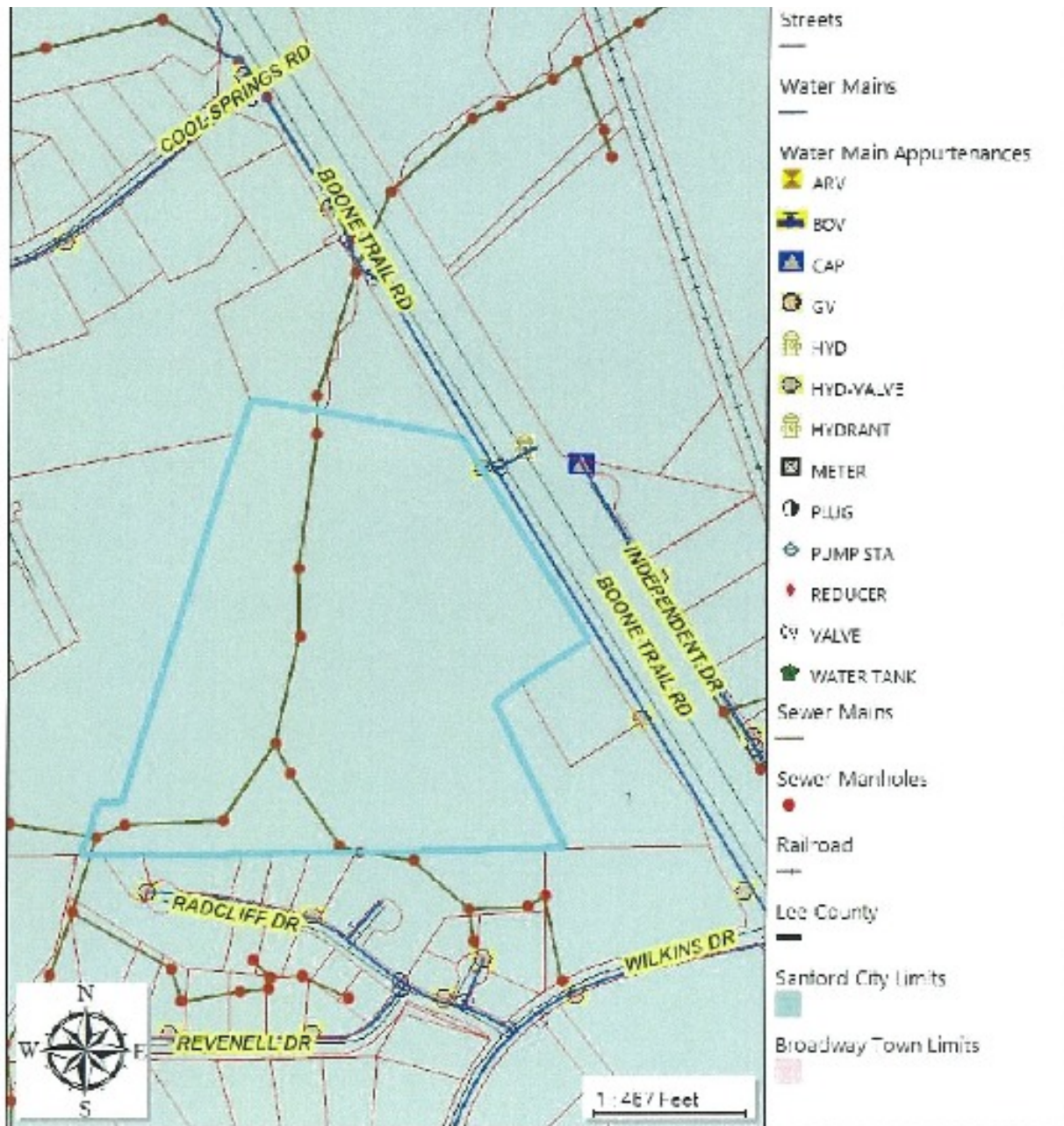
O: 919 714 7122 | C: 919 356 9254
cwilson@naicarolantic.com

E. Stephen Stroud, SIOR

O: 919 832 0594 | C: 919 669 5564
sstroud@naicarolantic.com

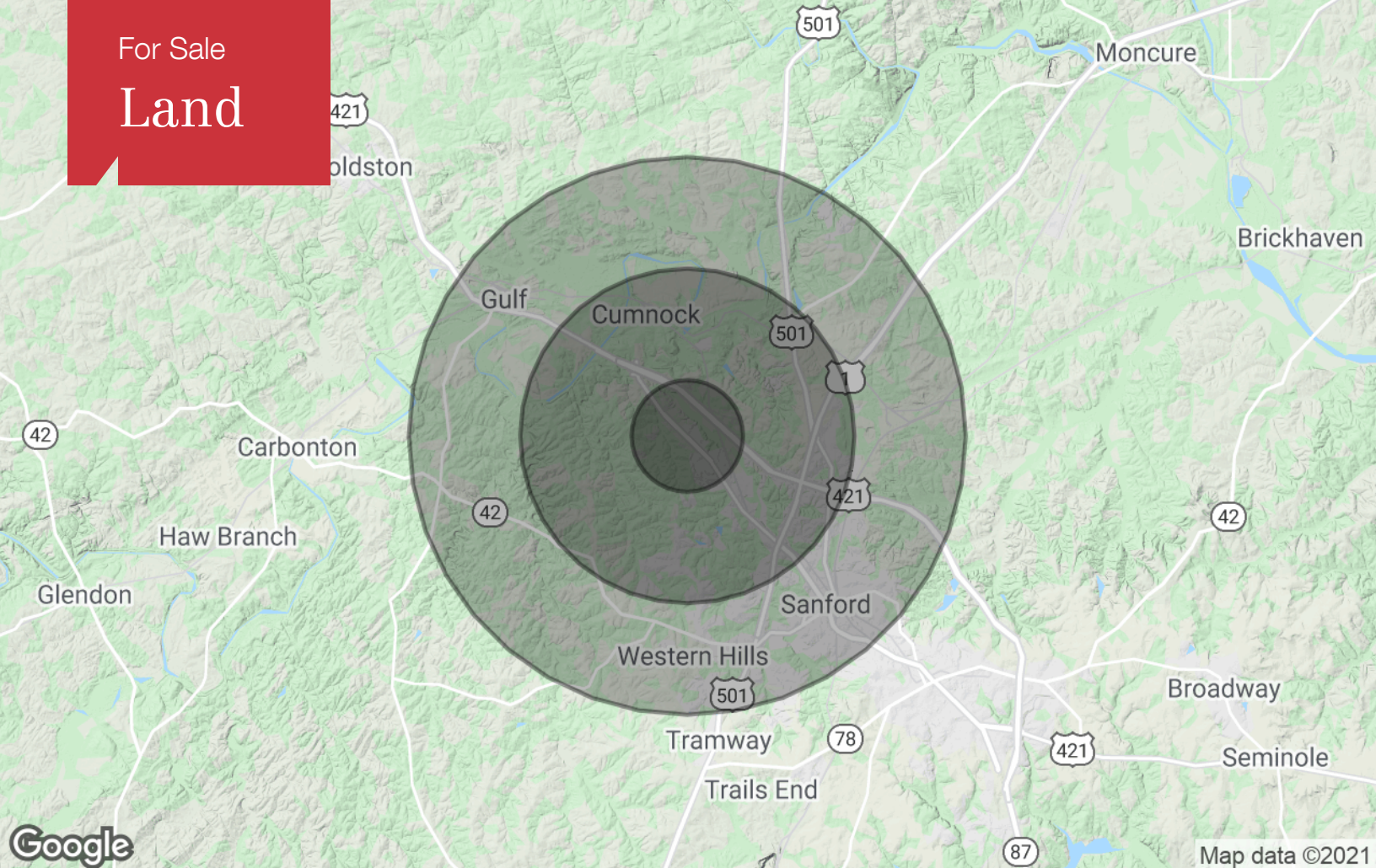
For Sale
Land





This site is prepared for the inventory of real property found within the jurisdiction and is compiled from recorded deeds, plats and other public records and data. Users of this site are hereby notified that the aforementioned public primary information sources should be consulted for verification of the information contained on this site. The County of Lee and Duke Solutions, Inc. assume no legal responsibility for the information contained on this site. Please be advised that you must contact the Lee County Tax Office for accurate tax values. Please contact the Lee County Appraisal Department if any building information is incorrect. The map, layer, data and website (collectively known as GeoCite Layer 2.0) are for graphical and illustration purposes only. The Lee County Strategic Services Department (hereinafter "Department") provides the layer and the information contained within to the general public and has not customized the information for any specific or general purpose. Such information was generated from data maintained by different sources and agencies and as such, some limitations may apply based upon restrictions imposed by other sources or agencies supplying data to Lee County (hereinafter "Data Sources"). While the Department strives to make the information on the GIS website as timely, reliable and accurate as possible, neither the Department nor the County, Lee, nor its employees make any claims, warranties or representations as to the accuracy of the information contained herein or properties represented, including any (A) warranty of fitness for a particular purpose; or (B) warranty of title; whether express or implied by law, course of dealing, course of performance, usage of trade or otherwise. Projections, opinions, assumptions or estimates are provided for illustration only and do not reflect current or future performance of the property. Information is provided subject to, without notice (i) errors, omissions, change of availability, price, or other conditions, and (ii) prior sale, lease or financing or withdrawal, and special listing conditions. No warranties or representations are made as to the condition of the property or hazards contained therein, nor are any to be implied.

For Sale Land



Population

	1 Mile	3 Miles	5 Miles
TOTAL POPULATION	5,366	25,272	38,927
MEDIAN AGE	32.6	34.1	34.7
MEDIAN AGE (MALE)	29.4	32.5	33.4
MEDIAN AGE (FEMALE)	36.1	36.3	36.3

Households & Income

	1 Mile	3 Miles	5 Miles
TOTAL HOUSEHOLDS	1,920	9,270	14,347
# OF PERSONS PER HH	2.8	2.7	2.7
AVERAGE HH INCOME	\$37,893	\$50,182	\$51,586
AVERAGE HOUSE VALUE	\$167,402	\$167,500	\$163,906

* Demographic data derived from 2010 US Census