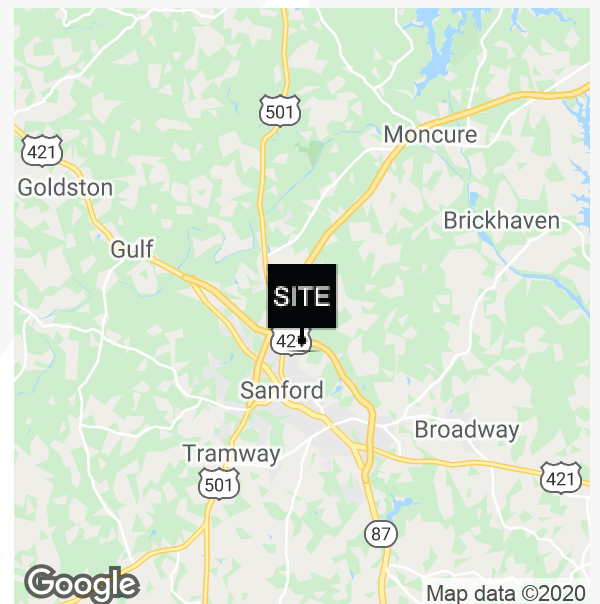


1751 Colon Rd.

Sanford, North Carolina 27330

Property Highlights

- ±117 acres
- Access to dual rail
- CSX
- Norfolk Southern
- 3 Minutes to US Hwy. 1 and US Hwy. 421
- 18 Minutes to I-540 (RTP/RDU)
- 27 Minutes to I-40 (Raleigh)
- Zoning: Heavy Industrial District
- Water and sewer nearby
- US Hwy. 1, Exit 71: 2 Miles
- Sanford: 4 Miles
- Sales price: \$10,000/acre



For more information

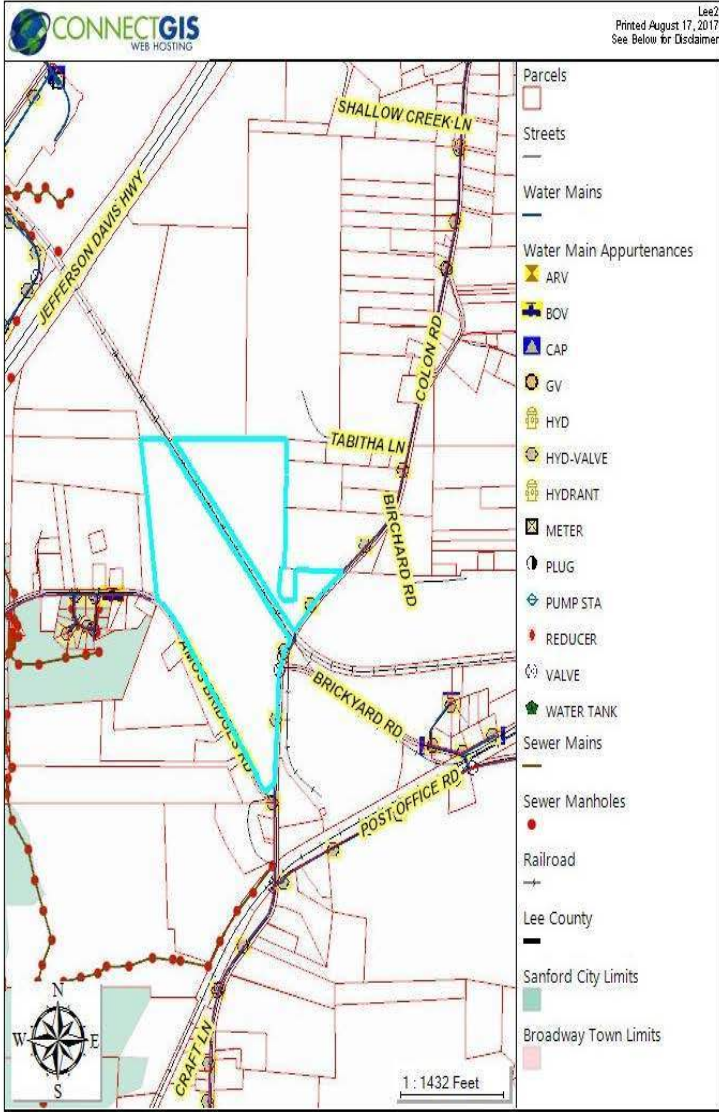
Carson Wilson

C: 919 356 9254
cwilson@naicarolantic.com

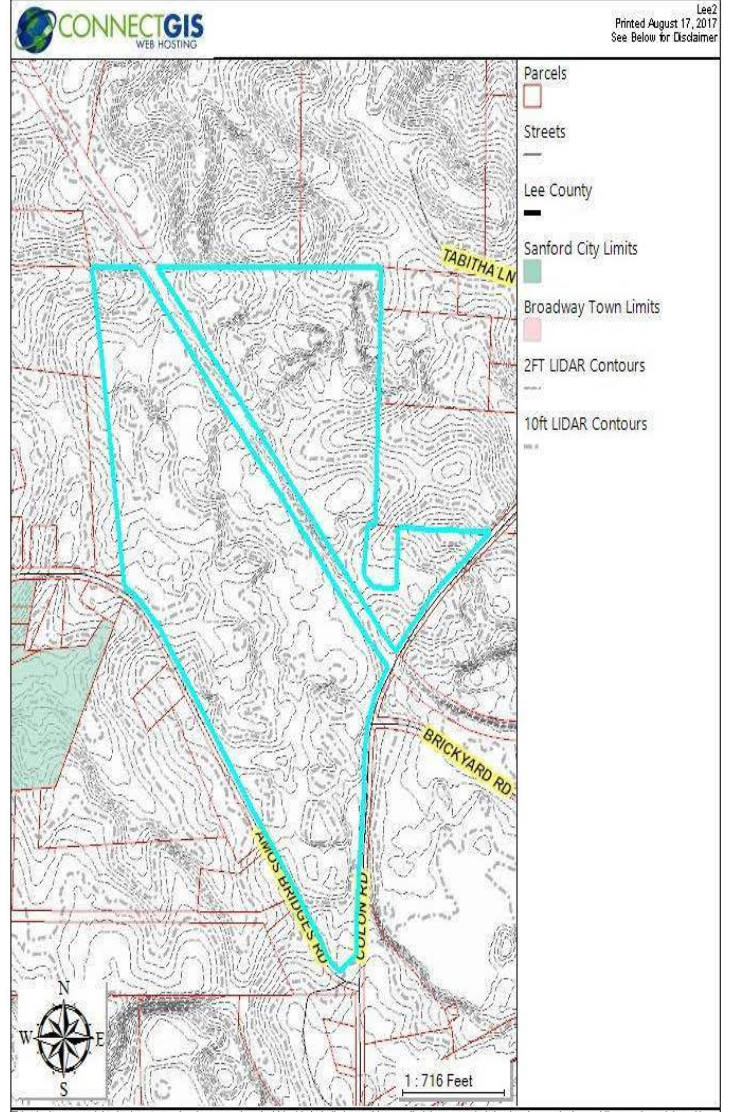
Michael Wallace

C: 919 219 1112
mwallace@naicarolantic.com

For Sale
Land



This site is prepared for the inventory of real property found within this jurisdiction and is compiled from recorded deeds, plats and other public records and data. Users of this site are hereby notified that the aforementioned public primary information sources should be consulted for verification of the information contained on this site. The County of Lee and Dude Solutions, Inc. assume no legal responsibility for the information contained on this site. Please be advised that you must contact the Lee County Tax Office for accurate tax values. Please contact the Lee County Appraisal Department if any building information is incorrect. The map, layer, data and website (collectively known as "the layer") are for graphical and illustration purposes only. The Lee County Strategic Services Department (hereinafter "the Department") provides the layer and the information contained within to the general public and has not customized the information for any specific or general purpose. Such information was generated from data maintained by different sources and agencies and as such, some limitations may apply based upon restrictions imposed by other sources or agencies supplying data to Lee County (hereinafter "the County"). While the Department strives to make the information on the GIS website as timely, reliable and accurate as possible, neither the Department nor the County local governments make any claims, promises, or guarantees about the accuracy, completeness or adequacy of the contents of the layer. Areas depicted are approximate and are not necessarily accurate to mapping, surveying or engineering standards. The County expressly disclaims liability for errors and omissions in the contents of this site and layer. No warranty of any type, implied, expressed, statutory, UCC or otherwise, including, but not limited to, the warranties of non-infringement of third party rights, title, accuracy of data, merchantability, or fitness for a particular purpose, is given with respect to the substantive content of this layer or its use in private or commercial financial transactions. The fact of distribution of the layer does not constitute any warranty, express, implied or otherwise. The user assumes the entire risk related to the use of this data. If the user intends to make any legal or financial decision based on this data, the user should independently verify the accuracy of the same. The Strategic Services Department and the Lee County local governments are providing this data "as is" in no event will any of the foregoing local governments or their officers and employees be liable to you or to any third party for any direct, indirect, incidental, consequential, special or exemplary damages or lost profit resulting from any use or misuse of this data. Unless otherwise noted on an



This site is prepared for the inventory of real property found within this jurisdiction and is compiled from recorded deeds, plats and other public records and data. Users of this site are hereby notified that the aforementioned public primary information sources should be consulted for verification of the information contained on this site. The County of Lee and Dude Solutions, Inc. assume no legal responsibility for the information contained on this site. Please be advised that you must contact the Lee County Tax Office for accurate tax values. Please contact the Lee County Appraisal Department if any building information is incorrect. The map, layer, data and website (collectively known as "the layer") are for graphical and illustration purposes only. The Lee County Strategic Services Department (hereinafter "the Department") provides the layer and the information contained within to the general public and has not customized the information for any specific or general purpose. Such information was generated from data maintained by different sources and agencies and as such, some limitations may apply based upon restrictions imposed by other sources or agencies supplying data to Lee County (hereinafter "the County"). While the Department strives to make the information on the GIS website as timely, reliable and accurate as possible, neither the Department nor the County local governments make any claims, promises, or guarantees about the accuracy, completeness or adequacy of the contents of the layer. Areas depicted are approximate and are not necessarily accurate to mapping, surveying or engineering standards. The County expressly disclaims liability for errors and omissions in the contents of this site and layer. No warranty of any type, implied, expressed, statutory, UCC or otherwise, including, but not limited to, the warranties of non-infringement of third party rights, title, accuracy of data, merchantability, or fitness for a particular purpose, is given with respect to the substantive content of this layer or its use in private or commercial financial transactions. The fact of distribution of the layer does not constitute any warranty, express, implied or otherwise. The user assumes the entire risk related to the use of this data. If the user intends to make any legal or financial decision based on this data, the user should independently verify the accuracy of the same. The Strategic Services Department and the Lee County local governments are providing this data "as is" in no event will any of the foregoing local governments or their officers and employees be liable to you or to any third party for any direct, indirect, incidental, consequential, special or exemplary damages or lost profit resulting from any use or misuse of this data. Unless otherwise noted on an

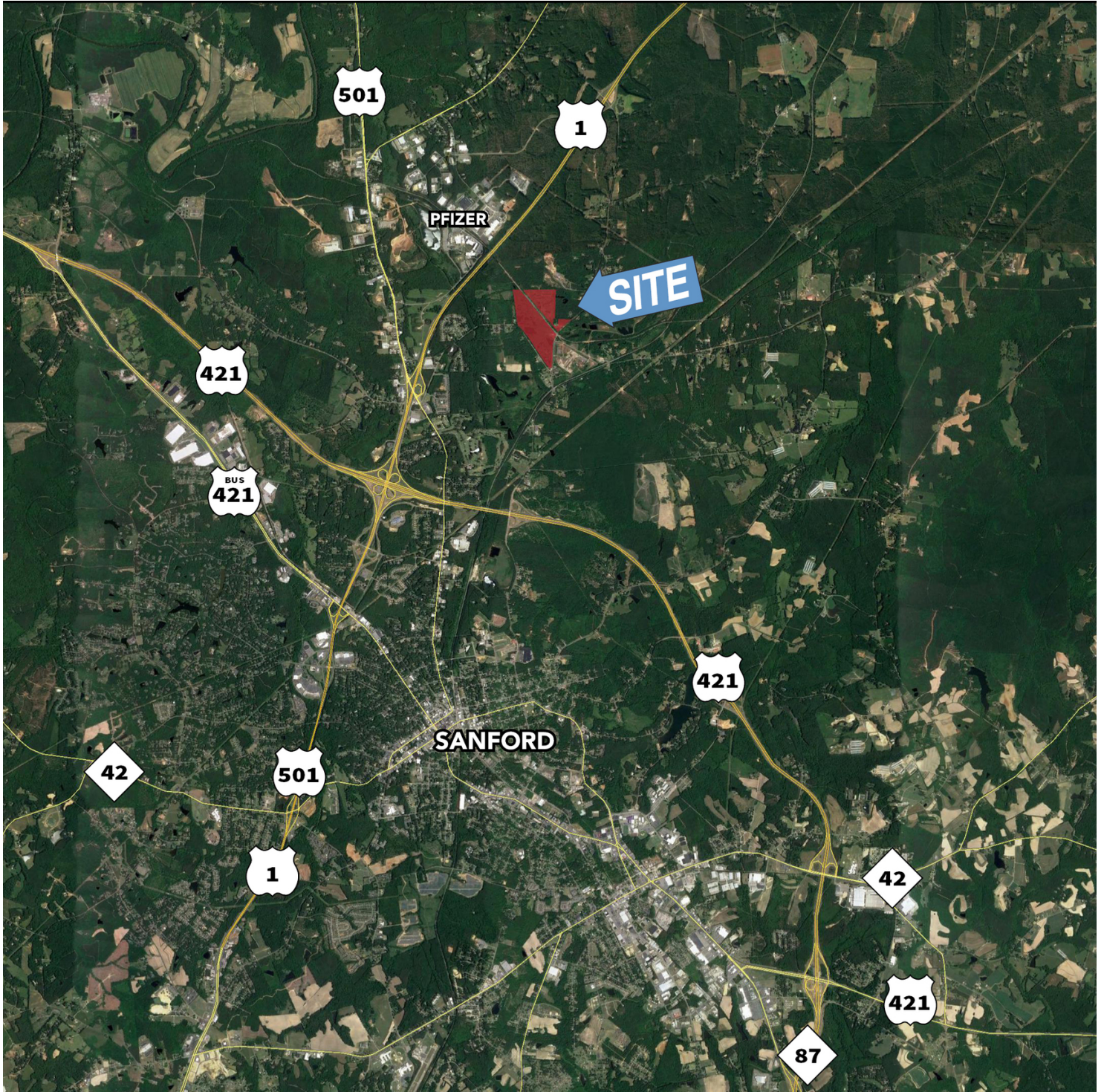
WATER & SEWER

Source: Lee County Connect GIS

TOPO

Source: Lee County Connect GIS

For Sale
Land



TRI PROPERTIES

NAI Carolantic Realty

Tri Properties | NAI Carolantic Realty, Inc. makes no warranty whatsoever with respect to the accuracy of the information contained herein or properties represented, including any (A) warranty of fitness for a particular purpose; or (B) warranty of title; whether express or implied by law, course of dealing, course of performance, usage of trade or otherwise. Projections, opinions, assumptions or estimates are provided for illustration only and do not reflect current or future performance of the property. Information is provided subject to, without notice (i) errors, omissions, change of availability, price, or other conditions, and (ii) prior sale, lease or financing or withdrawal, and special listing conditions. No warranties or representations are made as to the condition of the property or hazards contained therein, nor are any to be implied.

5121 Kingdom Way, Suite 200
Raleigh, NC 27607
919.832.0594
<https://naicarolantic.com>

in