

LAND FOR SALE

Highway 401 Louisburg, NC



± 13 ACRES FOR SALE

LOCATED ON US-401, THE PRIMARY THOROUGHFARE THROUGH FRANKLIN COUNTY. DIRECTLY ADJACENT TO A HOST OF OTHER RETAILERS INCLUDING WALMART, WALGREENS, BB&T, BOJANGLES AND LOCAL GROCER MOSS FOODS.

SIZE	13.28 acres
PRICE	Contact for pricing
ZONING	Town of Louisburg; Highway Business
UTILITIES	Public Water, Sewer and Gas available
SITE LOCATION	Louisburg, Franklin County
TRANSPORTATION	Full service access onto Bickett Blvd. and Main St.
SITE IMPROVEMENTS	Partially cleared and graded. Wetland delineation by US ACE complete.



Contact:
ROB GRIFFIN
 919.281.2318
 rgriffin@triprop.com

TRI PROPERTIES

NAI Carolantic Realty

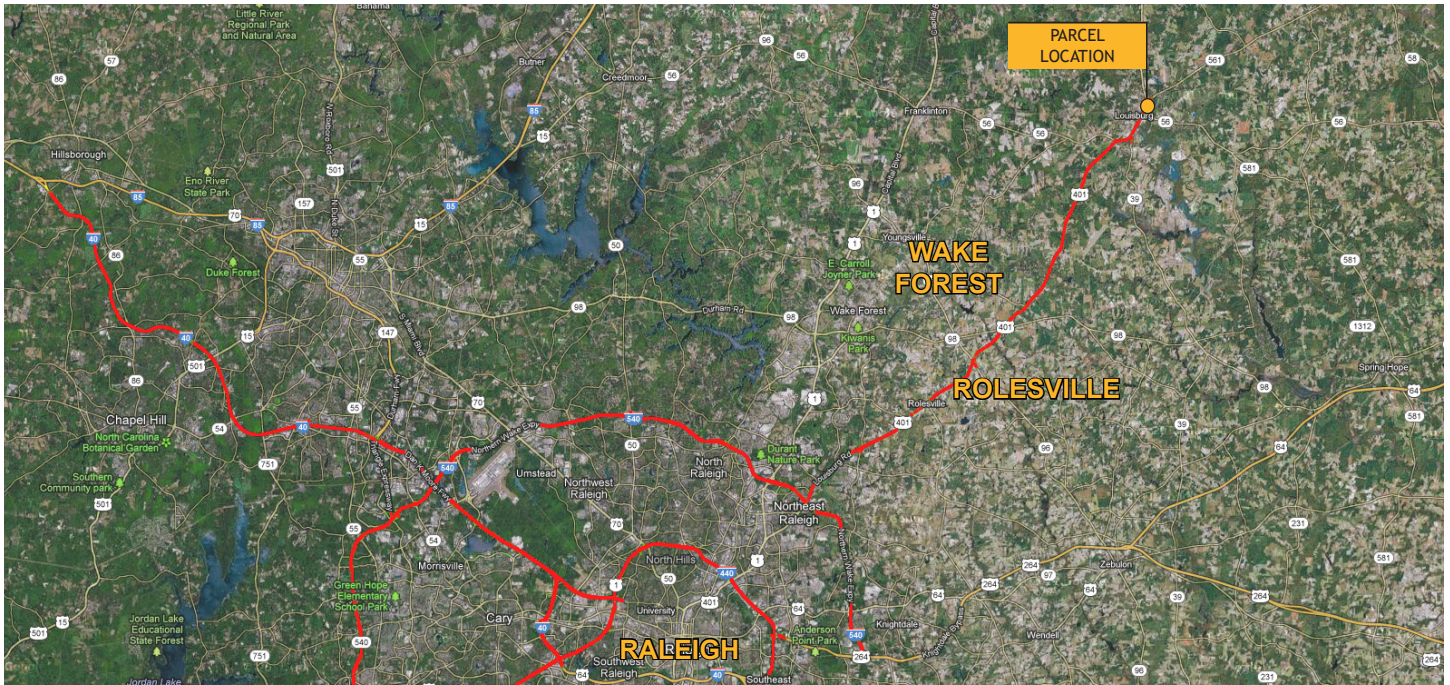
5425 Page Road, Suite 100
 Durham, NC 27703
 triprop.com

All information provided herein is from sources deemed reliable. However, all information is subject to verification. Tri Properties does not independently verify nor warrant the accuracy of the information.

LAND PARCEL FOR SALE

Highway 401 Louisburg, NC

± 13 ACRES
FOR SALE



Contact:

ROB GRIFFIN
919.281.2318
rgriffin@triprop.com

TRI PROPERTIES

NAI Carolantic Realty

5425 Page Road, Suite 100
Durham, NC 27703
triprop.com

All information provided herein is from sources deemed reliable. However, all information is subject to verification. Tri Properties does not independently verify nor warrant the accuracy of the information.