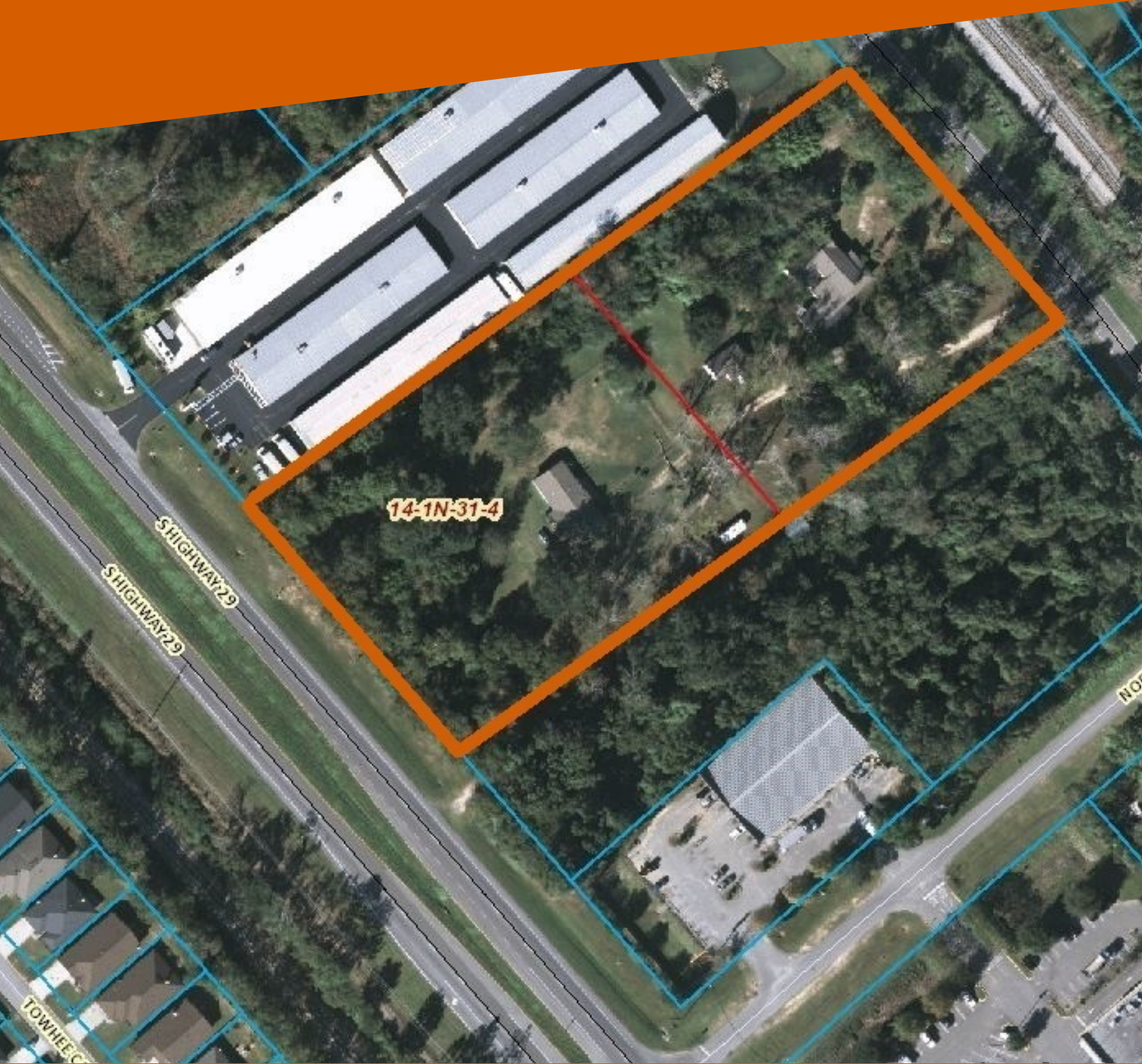


LAND FOR SALE

TOTAL OF 2.07 ACRES - ZONED COM

1395 Highway 29 , Cantonment, FL 32533



This information has been secured by Beck Partners CRE, LLC. from sources believed to be reliable. It is not guaranteed, however, and should be verified prior to consummating any transaction.

Debbie Anglin, SIOR

Vice President
850.477.7044 x4384
C 850.501.1075
danglin@teambeck.com

Thomas McVoy

Sales Associate
850.477.7044
C 850.516.2208
tmcvoy@teambeck.com



LAND FOR SALE

Total Of 2.07 Acres - Zoned COM

1395 Highway 29 , Cantonment, FL 32533



OFFERING SUMMARY

Sale Price: \$375,000

Available SF:

Lot Size: 2.07 Acres

Zoning: COM

Traffic Count: 20,000

Price / SF: \$4.16

PROPERTY OVERVIEW

2.07 Acres of Land For Sale fronting Highway 95A South in Cantonment.

Priced at \$375,00 and located just North of Tate School Road. Small house on property - no value given but is occupied by Owner.

*2.41 Acres (contiguous) and fronting on Highway 29 is also available for sale at \$425,000

PROPERTY HIGHLIGHTS

- Parcel # 141N311007000016
- Excellent Redevelopment Property
- Property is just north of Arby's, Dollar General, Winn Dixie and Post Office to North
- Owners occupy both houses - please respect their privacy.



Debbie Anglin, SIOR
danglin@teambeck.com
850.477.7044 x4384

Thomas McVoy
tmcvoy@teambeck.com
850.477.7044



LAND FOR SALE

Total Of 2.07 Acres - Zoned COM

1395 Highway 29 , Cantonment, FL 32533



Debbie Anglin, SIOR
danglin@teambeck.com
850.477.7044 x4384

Thomas McVoy
tmcvoy@teambeck.com
850.477.7044