



**COMMERCIAL REAL ESTATE**

LAND FOR SALE



# Dog Island Bayfront 20 Acres

Gulf Shore Blvd.  
West End Dog Island, FL 32322

**DAN AUSLEY**

Partner/Broker  
850.566.6761  
dan@tlgproperty.com

**TLG REAL ESTATE SERVICES**

3520 Thomasville Road, Suite 200  
Tallahassee, FL 32309  
O: 850.385.6363



## EXECUTIVE SUMMARY

## GULF SHORE BLVD.

WEST END DOG ISLAND, FL 32322



## OFFERING SUMMARY

**Sale Price:** \$399,000

**Lot Size:** +/- 20 Acres

**Zoning:** Resident - 1 Unit Per 5 Acres

**APN:** 06-08S-04W-5265-0090-0070  
06-08S-04W-5265-0090-0080

## PROPERTY OVERVIEW

Unique opportunity to own 20 bayfront acres on Dog Island. Property is located on the west end of Dog Island. Perfect location to build a family compound and escape. Accessible only by boat, so expect isolated privacy. Beautiful white sand beaches for miles. Zoning allows 1 home per 5 acres. Easements for Gulf access. This is old Florida, share the environment with Eagles, Ospreys, Dolphins and Pelicans.

## LOCATION OVERVIEW

West end of Dog Island, located off of Carrabelle, FL.

**Dan Ausley**  
850.566.6761  
dan@tlgproperty.com

**TLG REAL ESTATE SERVICES**  
3520 Thomasville Road, Suite 200, Tallahassee, FL 32309  
850.385.6363







ADDITIONAL PHOTOS  
**GULF SHORE BLVD.**  
WEST END DOG ISLAND, FL 32322



**Dan Ausley**  
850.566.6761  
dan@tlgproperty.com

**TLG REAL ESTATE SERVICES**  
3520 Thomasville Road, Suite 200, Tallahassee, FL 32309  
850.385.6363



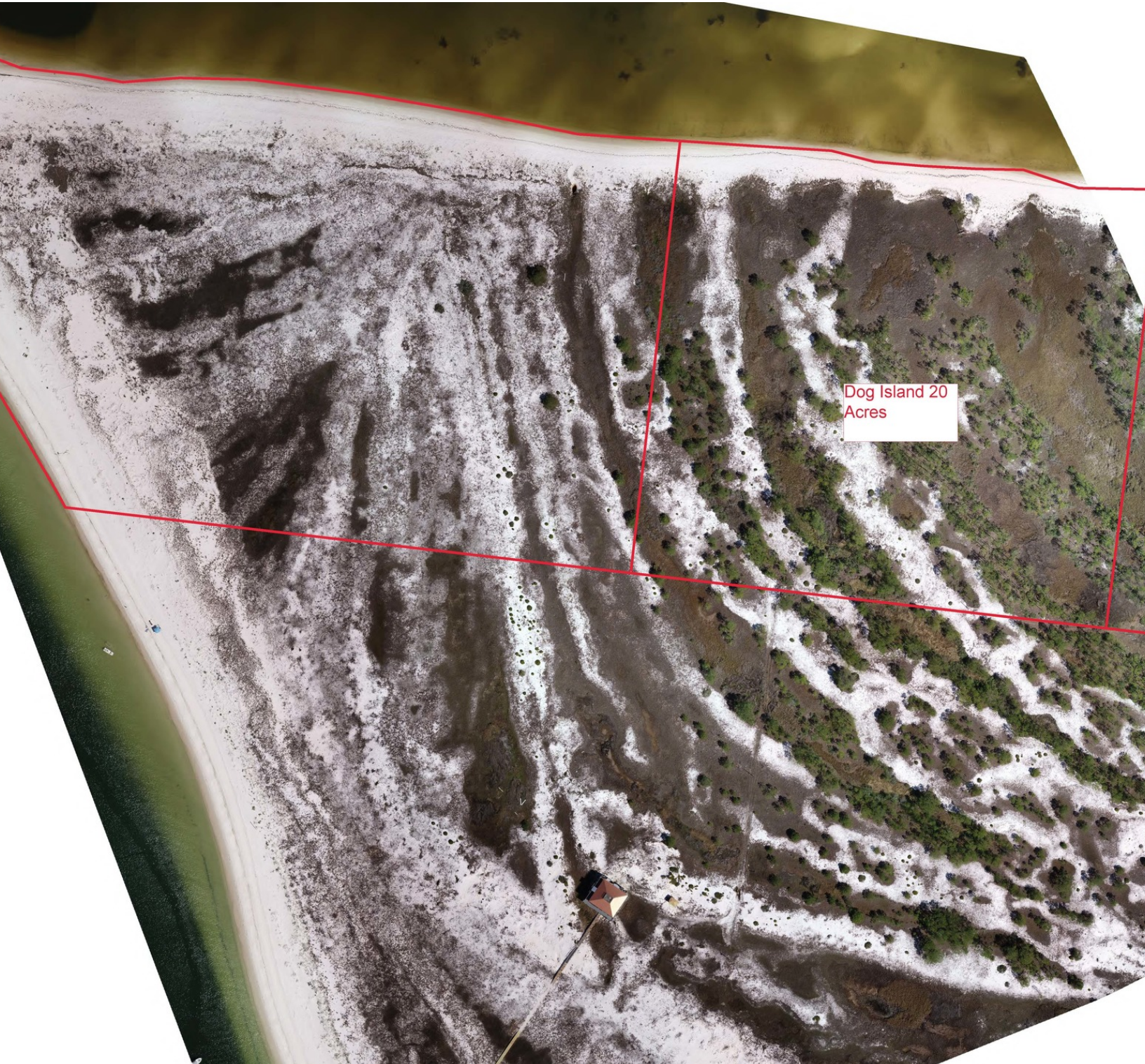




PARCEL MAP

# DOG ISLAND BAYFRONT 20 ACRES

GULF SHORE BLVD., WEST END , DOG ISLAND, FL 32322

Dog Island 20  
Acres

**Dan Ausley**  
850.566.6761  
dan@tlgproperty.com

**TLG REAL ESTATE SERVICES**  
3520 Thomasville Road, Suite 200, Tallahassee, FL 32309  
850.385.6363







AERIAL MAP

GULF SHORE BLVD.

WEST END, DOG ISLAND, FL 32322



Google

Map data ©2020 Imagery ©2020 , Landsat / Copernicus, Maxar Technologies, U.S. Geological Survey, USDA Farm Service Agency

**Dan Ausley**  
850.566.6761  
dan@tlgproperty.com

**TLG REAL ESTATE SERVICES**  
3520 Thomasville Road, Suite 200, Tallahassee, FL 32309  
850.385.6363



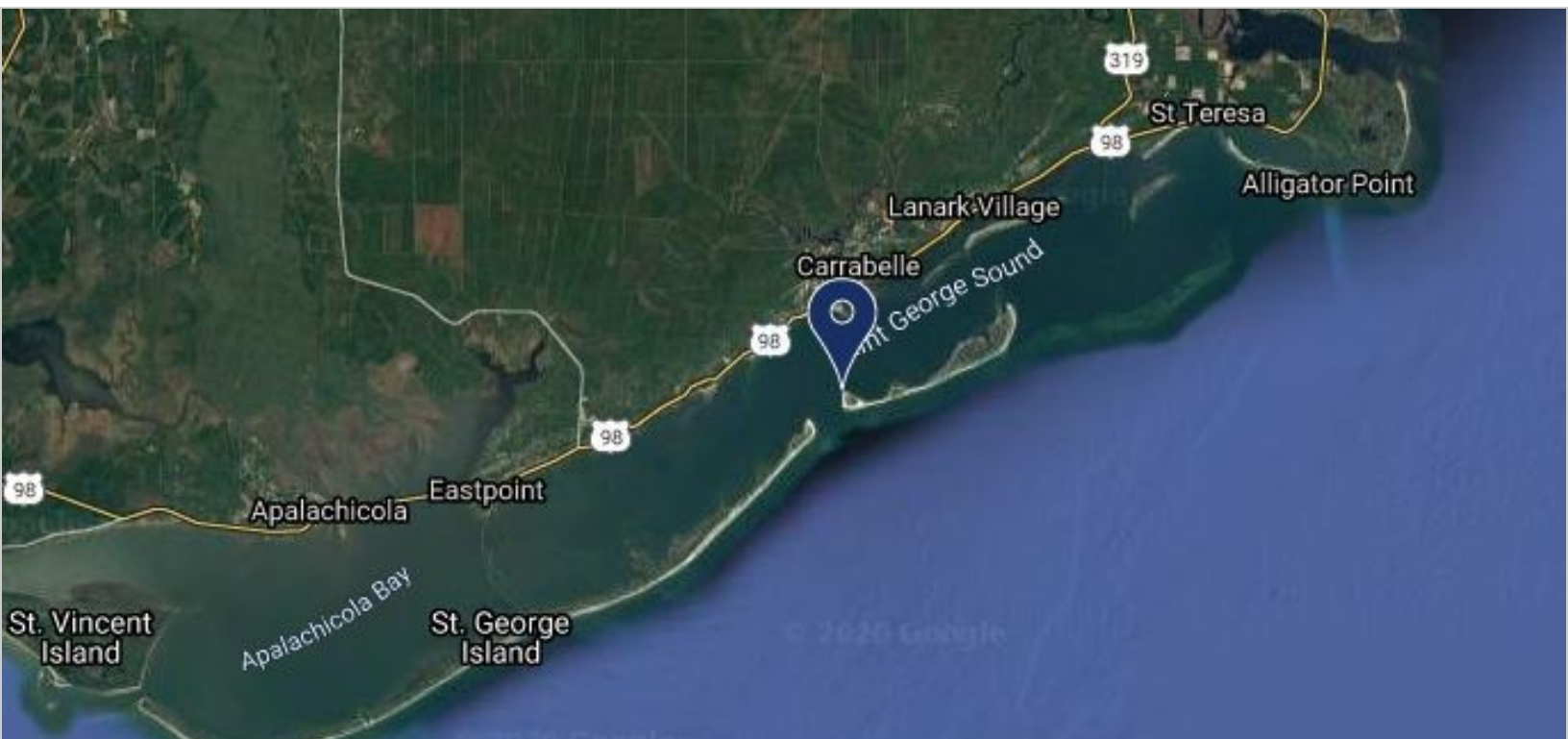
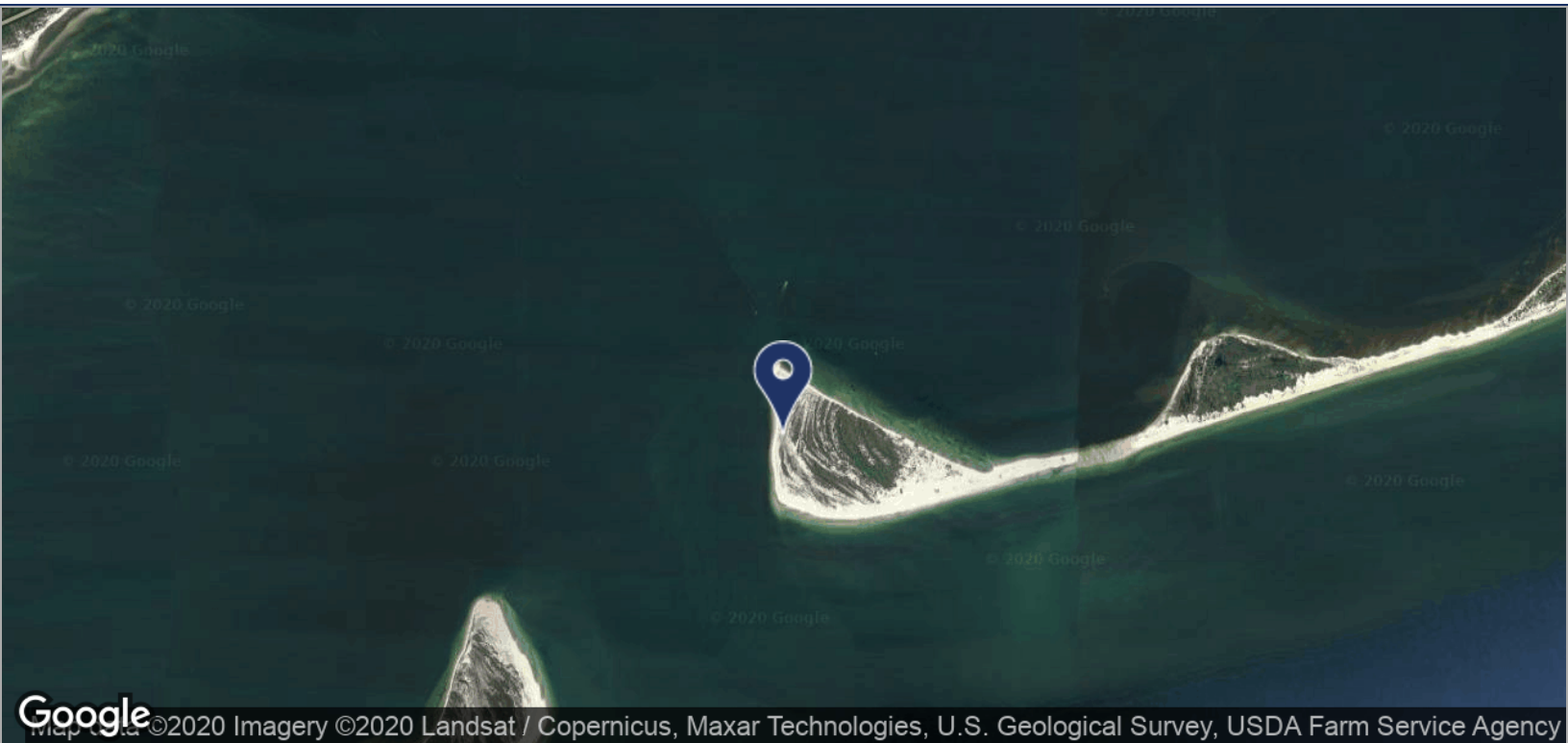
This information has been obtained from sources believed reliable. We have not verified it and make no guarantee, warranty or representation about it. Any projections, opinions, assumptions or estimates used are for example only and do not represent the current or future performance of the property. You and your advisors should conduct a careful, independent investigation of the property to determine to your satisfaction the suitability of the property for your needs. Photos herein are the property of their respective owners and use of these images without the express written content of the owner is prohibited.



LOCATION MAPS

## GULF SHORE BLVD.

WEST END DOG ISLAND, FL 32322



**Dan Ausley**  
850.566.6761  
dan@tlgproperty.com

**TLG REAL ESTATE SERVICES**  
3520 Thomasville Road, Suite 200, Tallahassee, FL 32309  
850.385.6363

