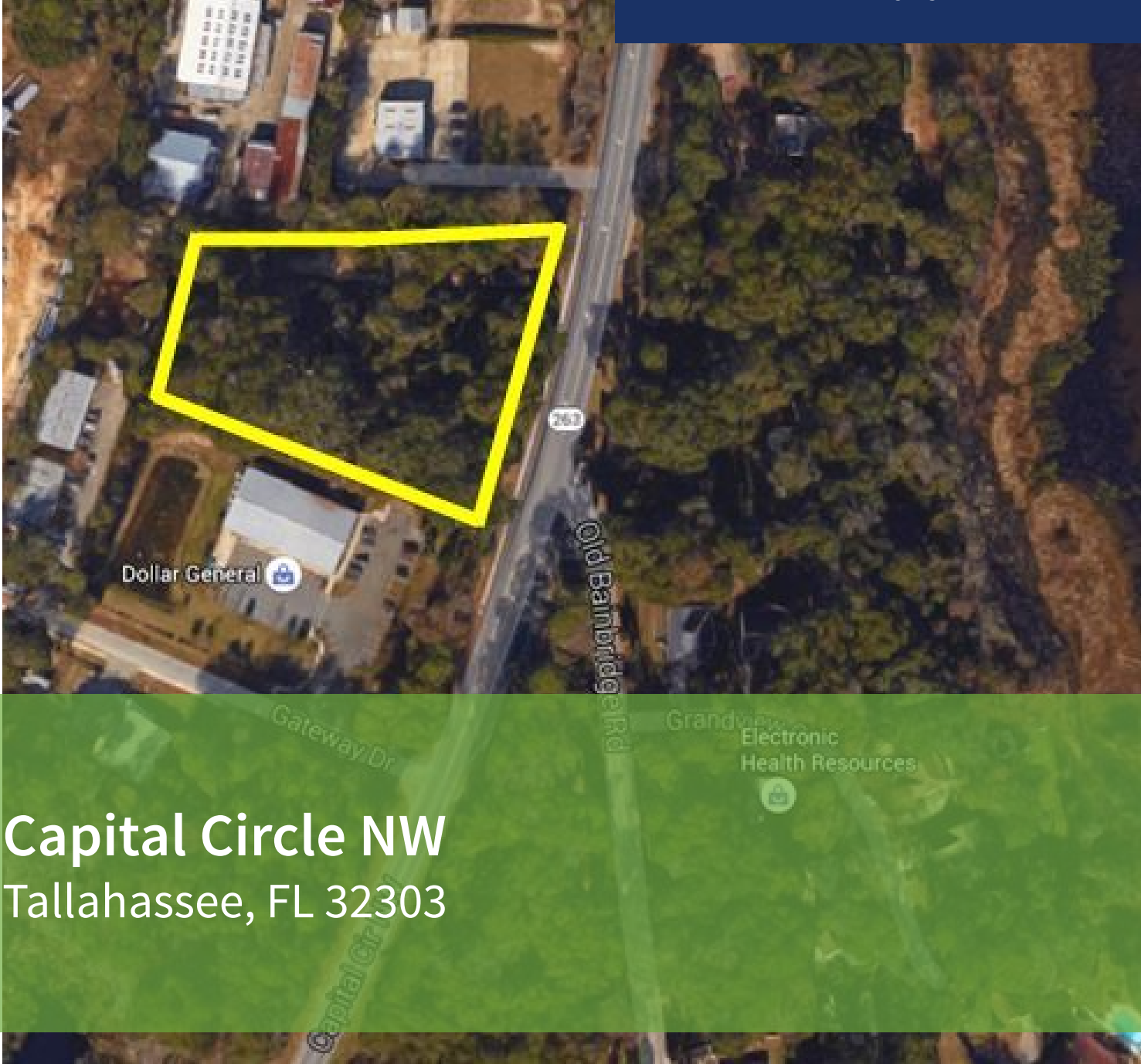




COMMERCIAL REAL ESTATE

LAND FOR SALE



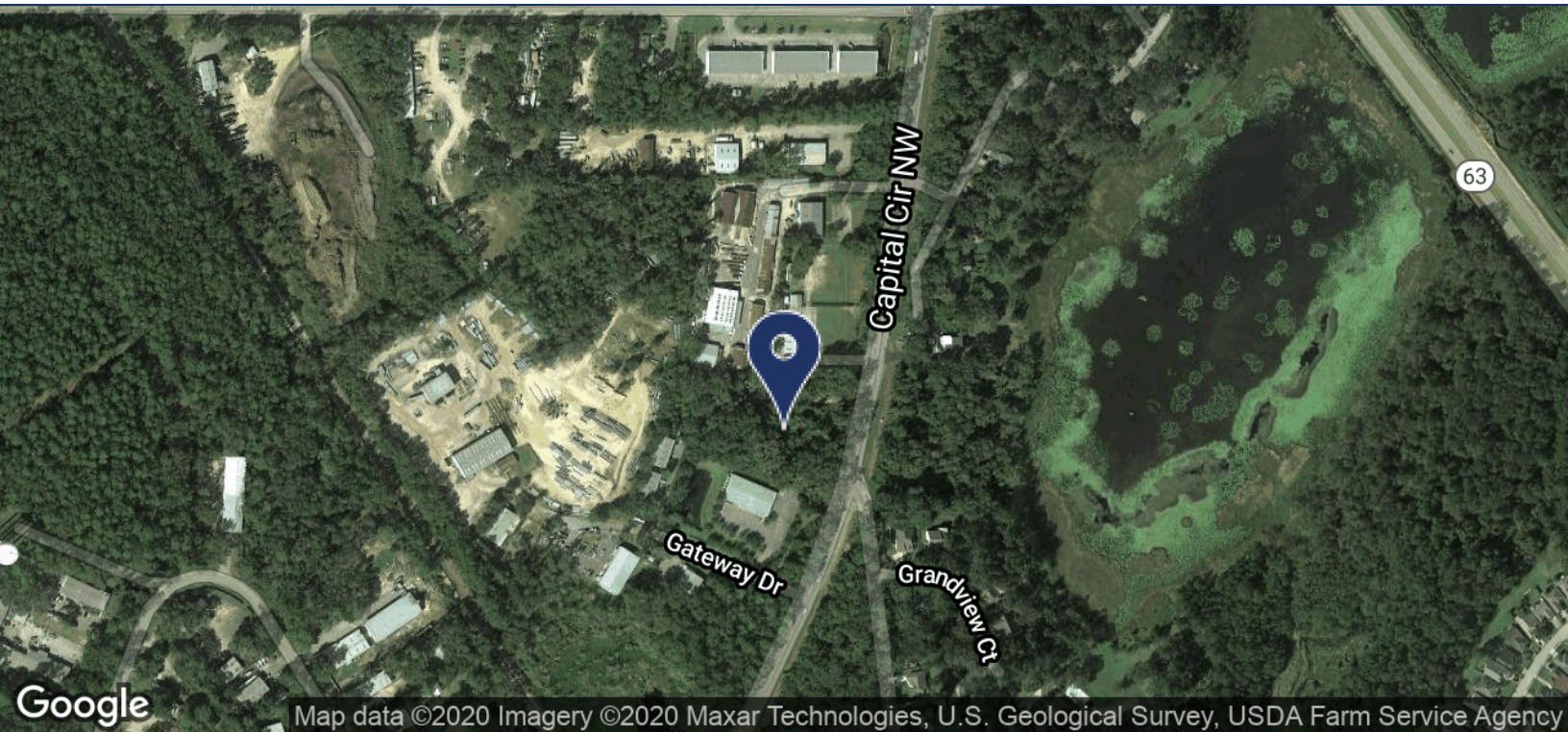
Capital Circle NW
Tallahassee, FL 32303

LAURIE BLANK
Associate
850.545.5107
lblank16@comcast.net

TLG REAL ESTATE SERVICES
3520 Thomasville Road, Suite 200
Tallahassee, FL 32309
O: 850.385.6363



EXECUTIVE SUMMARY
CAPITAL CIRCLE NW
 TALLAHASSEE, FL 32303



Map data ©2020 Imagery ©2020 Maxar Technologies, U.S. Geological Survey, USDA Farm Service Agency

OFFERING SUMMARY

Sale Price:	\$105,000
Price / Acre:	\$48,165
Lot Size:	2.18 Acres
Zoning:	C-2
Leon County APN:	24-31-20-420-0000

PROPERTY OVERVIEW

2.18 acres of vacant commercial land in the NW region of Tallahassee, FL.

LOCATION OVERVIEW

Located on Capital Circle NW, near Old Bainbridge Road, south of N. Monroe Street.

[Click here for zoning information](#)

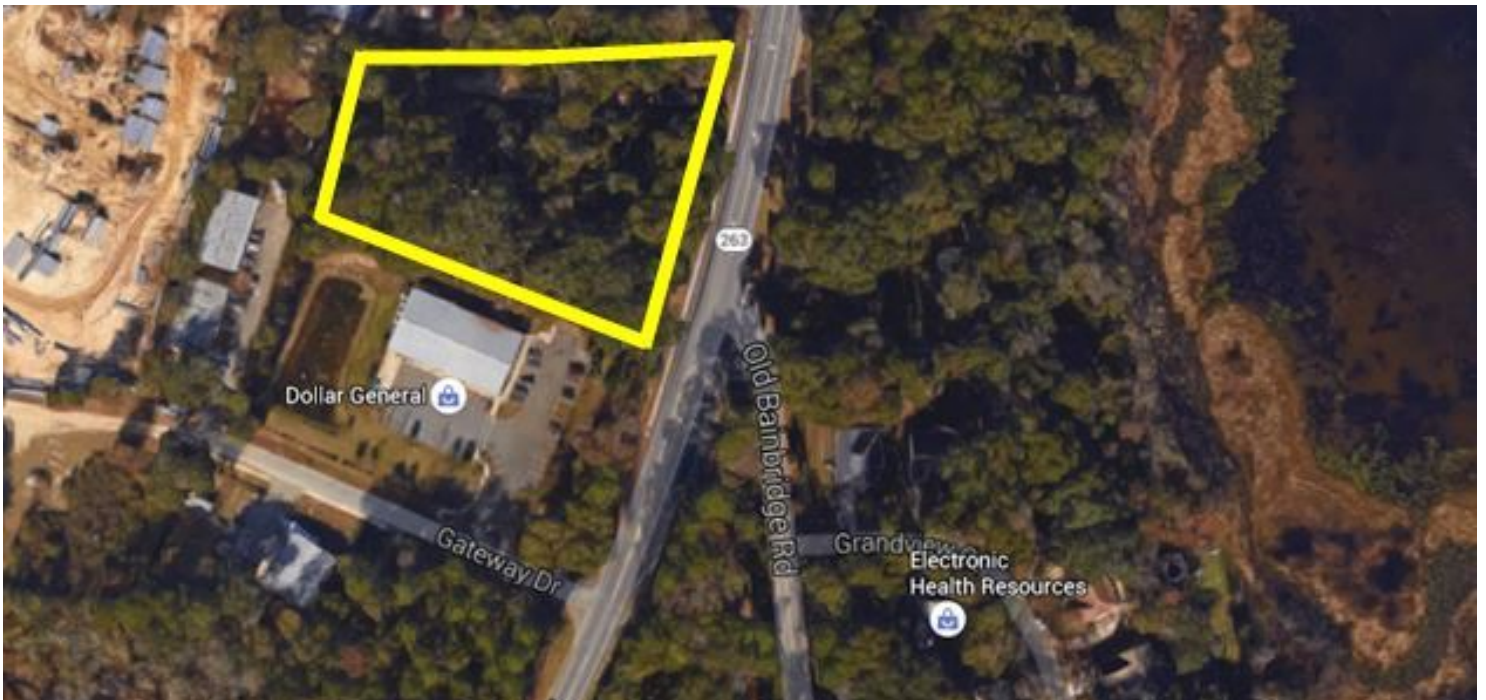
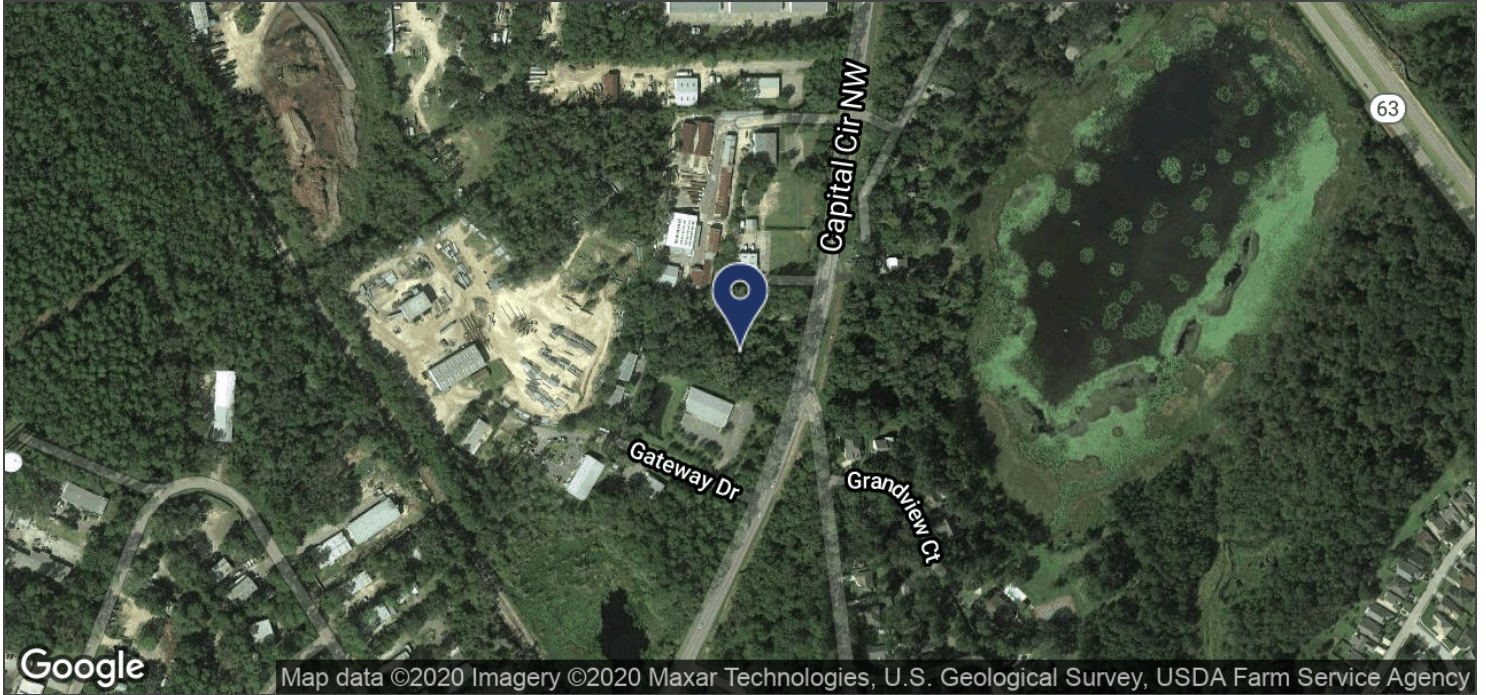
Laurie Blank
 850.545.5107
 lblank16@comcast.net

TLG REAL ESTATE SERVICES
 3520 Thomasville Road, Suite 200, Tallahassee, FL 32309
 850.385.6363





AERIAL MAP
CAPITAL CIRCLE NW
TALLAHASSEE, FL 32303



Laurie Blank
850.545.5107
lblank16@comcast.net

TLG REAL ESTATE SERVICES
3520 Thomasville Road, Suite 200, Tallahassee, FL 32309
850.385.6363

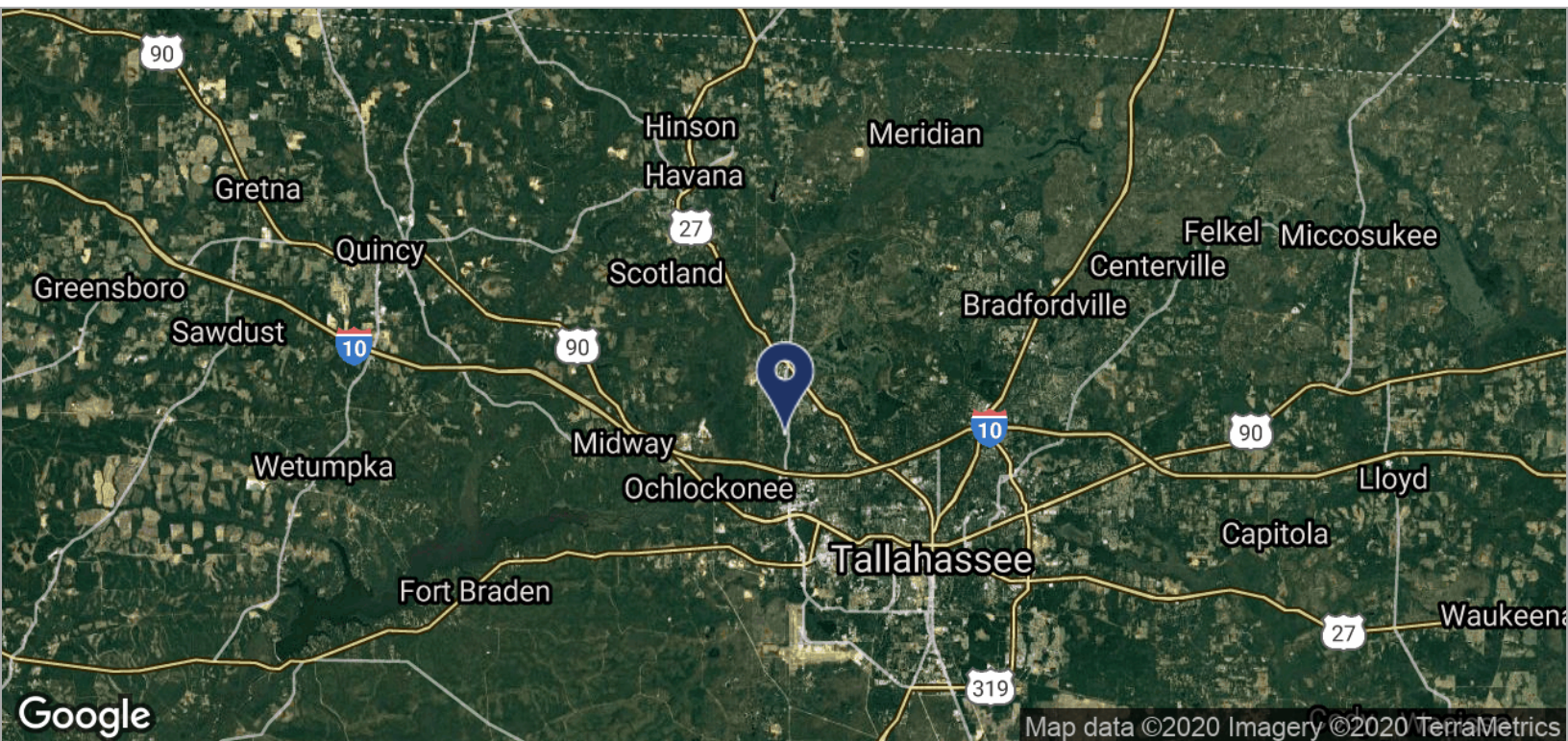
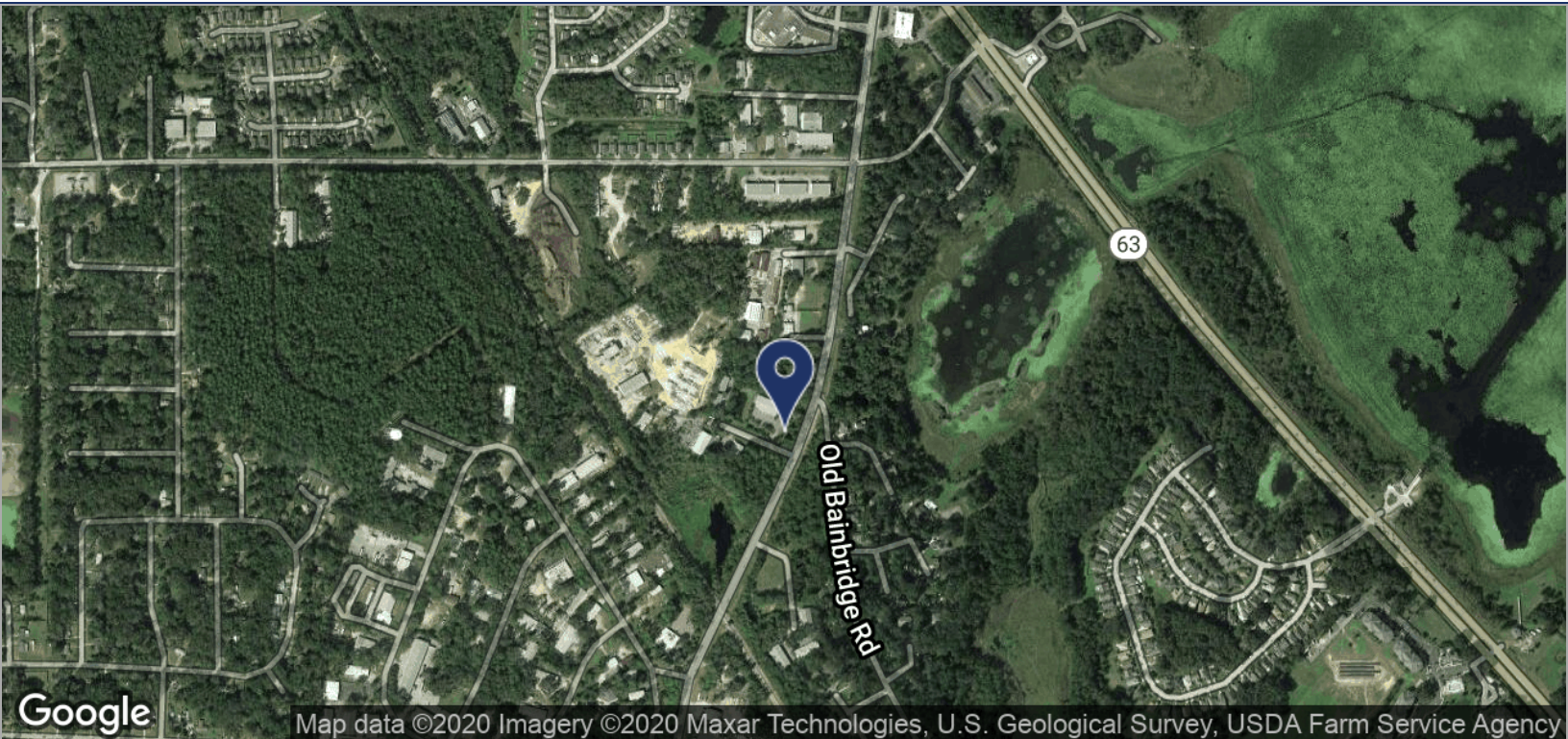




LOCATION MAPS

CAPITAL CIRCLE NW

TALLAHASSEE, FL 32303



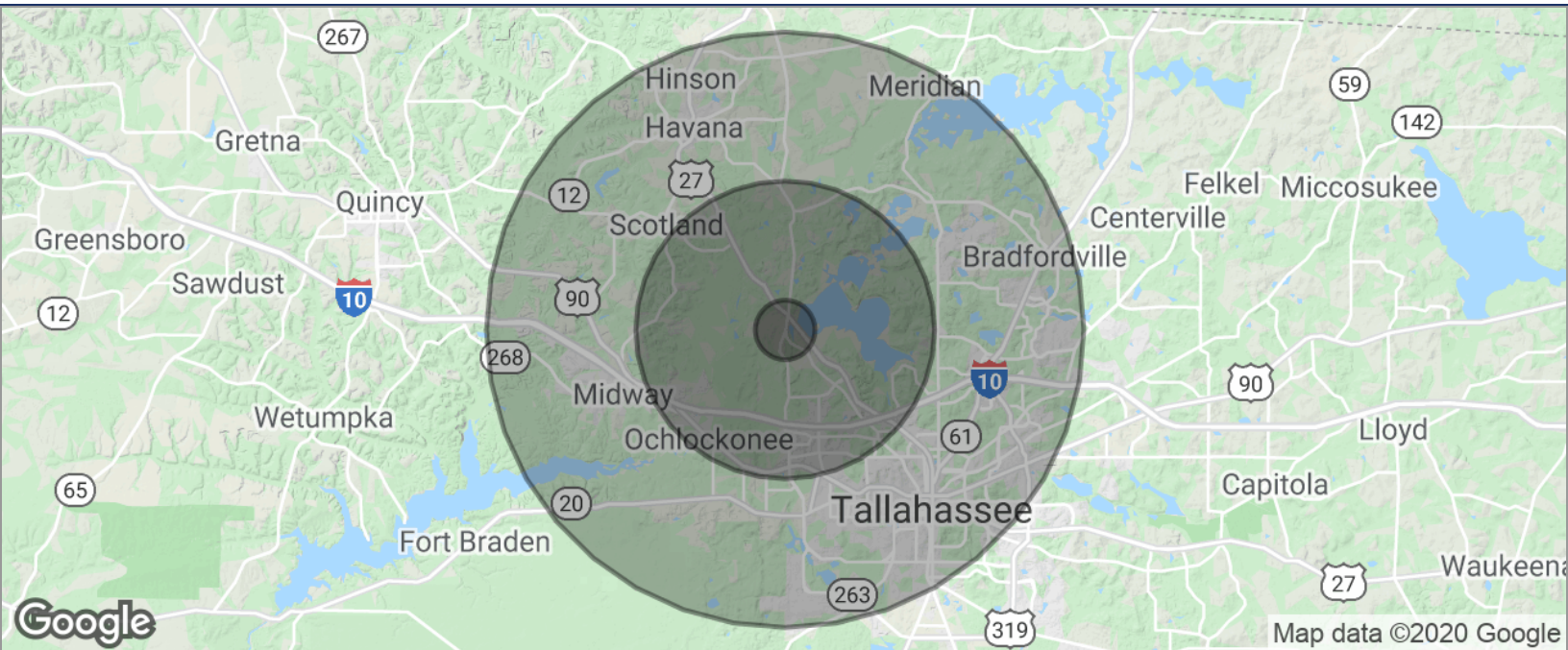
Laurie Blank
850.545.5107
lblank16@comcast.net

TLG REAL ESTATE SERVICES
3520 Thomasville Road, Suite 200, Tallahassee, FL 32309
850.385.6363





DEMOGRAPHICS MAP
CAPITAL CIRCLE NW
 TALLAHASSEE, FL 32303



POPULATION	1 MILE	5 MILES	10 MILES
TOTAL POPULATION	1,993	44,020	201,608
MEDIAN AGE	34.5	30.0	31.6
MEDIAN AGE (MALE)	33.2	29.3	31.2
MEDIAN AGE (FEMALE)	36.1	30.6	31.9
HOUSEHOLDS & INCOME	1 MILE	5 MILES	10 MILES
TOTAL HOUSEHOLDS	794	17,530	81,723
# OF PERSONS PER HH	2.5	2.5	2.5
AVERAGE HH INCOME	\$72,268	\$55,291	\$56,189
AVERAGE HOUSE VALUE	\$270,113	\$176,275	\$259,208

* Demographic data derived from 2010 US Census

Laurie Blank
 850.545.5107
 lblank16@comcast.net

TLG REAL ESTATE SERVICES
 3520 Thomasville Road, Suite 200, Tallahassee, FL 32309
 850.385.6363

