



COMMERCIAL REAL ESTATE

INDUSTRIAL PROPERTY FOR SALE



2931 Crescent Park Drive
Tallahassee, FL 32303

LEWIS BUFORD

Partner/Broker
850.591.6363
lewis@tlgproperty.com

TLG REAL ESTATE SERVICES

3520 Thomasville Road, Suite 200
Tallahassee, FL 32309
O: 850.385.6363



EXECUTIVE SUMMARY

2931 CRESCENT PARK DRIVE

TALLAHASSEE, FL 32303

**OFFERING SUMMARY****Sale Price:** \$860,000**Building Size:** 8,400 sf**APN:** 11-33-04-000-0110**Zoning:** Commercial Parkway (CP)**PROPERTY OVERVIEW**

Warehouse for sale with bay sizes ranging from 600 sf to 8,400 sf and 10' roll up doors and 15' ceilings.

LOCATION OVERVIEW

Located across from FWCI, just off Capital Circle Northeast. Near the NE corner of W Tennessee and Appleyard.

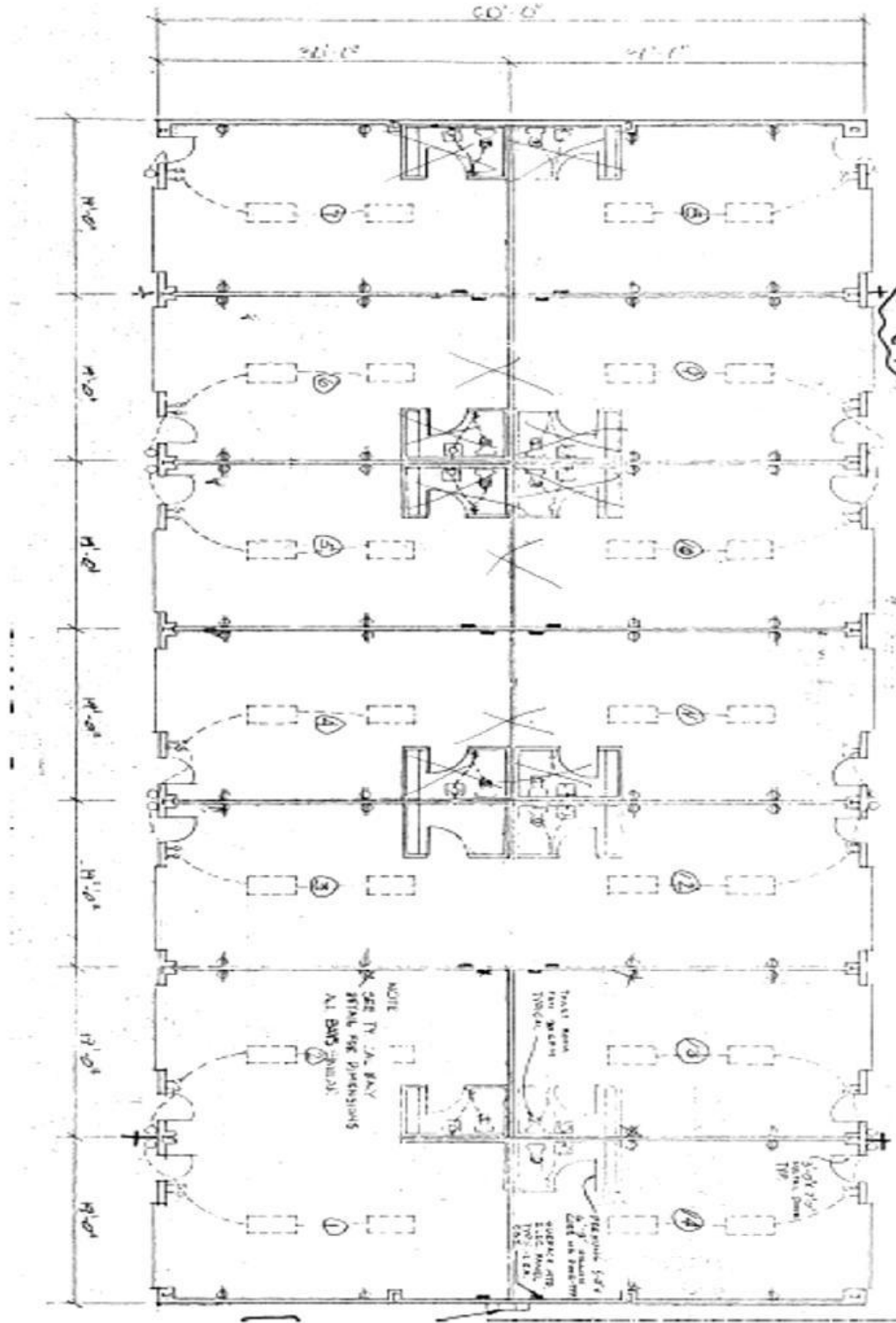
[Click Here for Zoning Information](#)

Lewis Buford
850.591.6363
lewis@tlgproperty.com

TLG REAL ESTATE SERVICES
3520 Thomasville Road, Suite 200, Tallahassee, FL 32309
850.385.6363



TALLAHASSEE, FL 32303



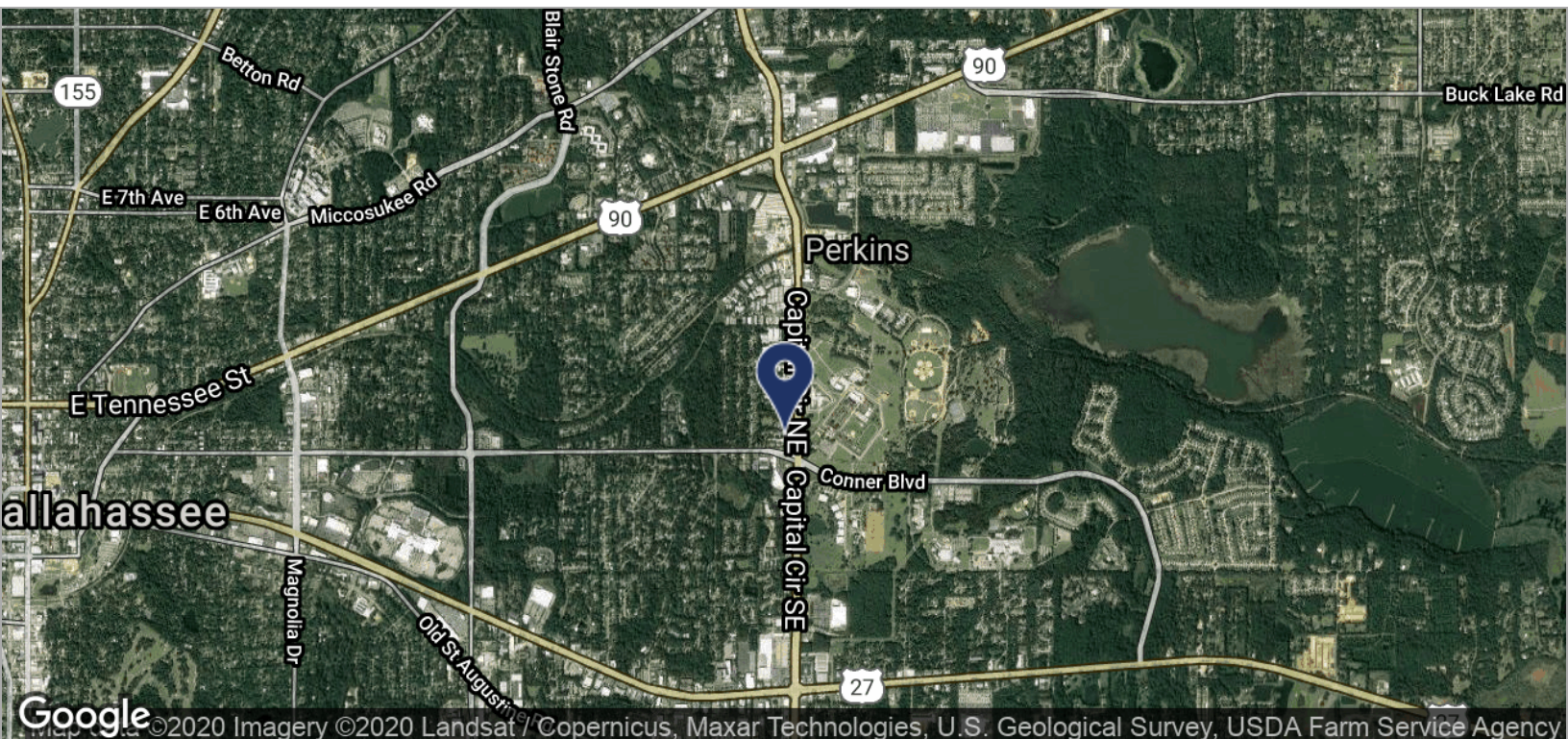
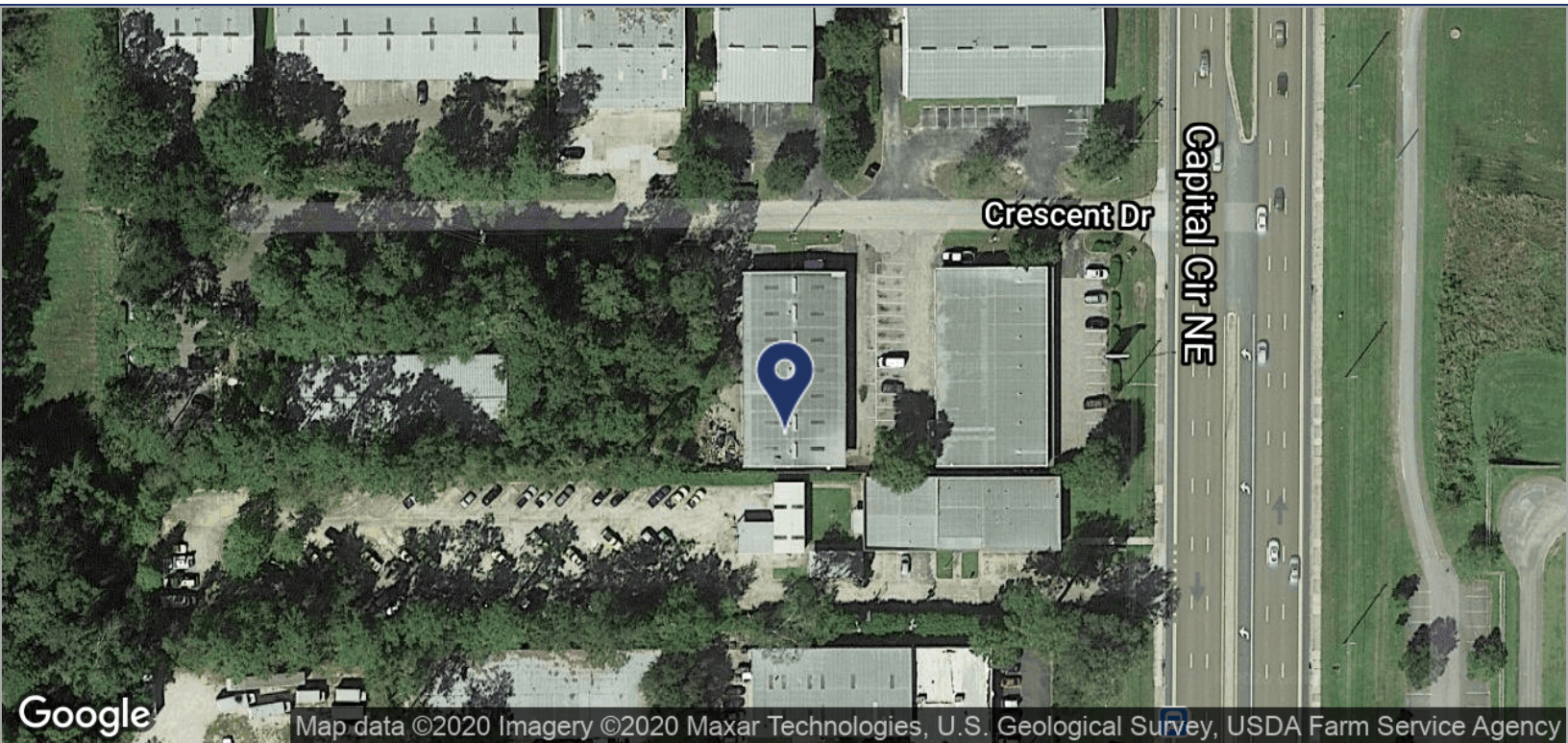
This information has been obtained from sources believed reliable. We have not verified it and make no guarantee, warranty or representation about it. Any projections, opinions, assumptions or estimates used are for example only and do not represent the current or future performance of the property. You and your advisors should conduct a careful, independent investigation of the property to determine to your satisfaction the suitability of the property for your needs. Photos herein are the property of their respective owners and use of these images without the express written content of the owner is prohibited.



LOCATION MAPS

2931 CRESCENT PARK DRIVE

TALLAHASSEE, FL 32303



Lewis Buford
850.591.6363
lewis@tlgproperty.com

TLG REAL ESTATE SERVICES
3520 Thomasville Road, Suite 200, Tallahassee, FL 32309
850.385.6363

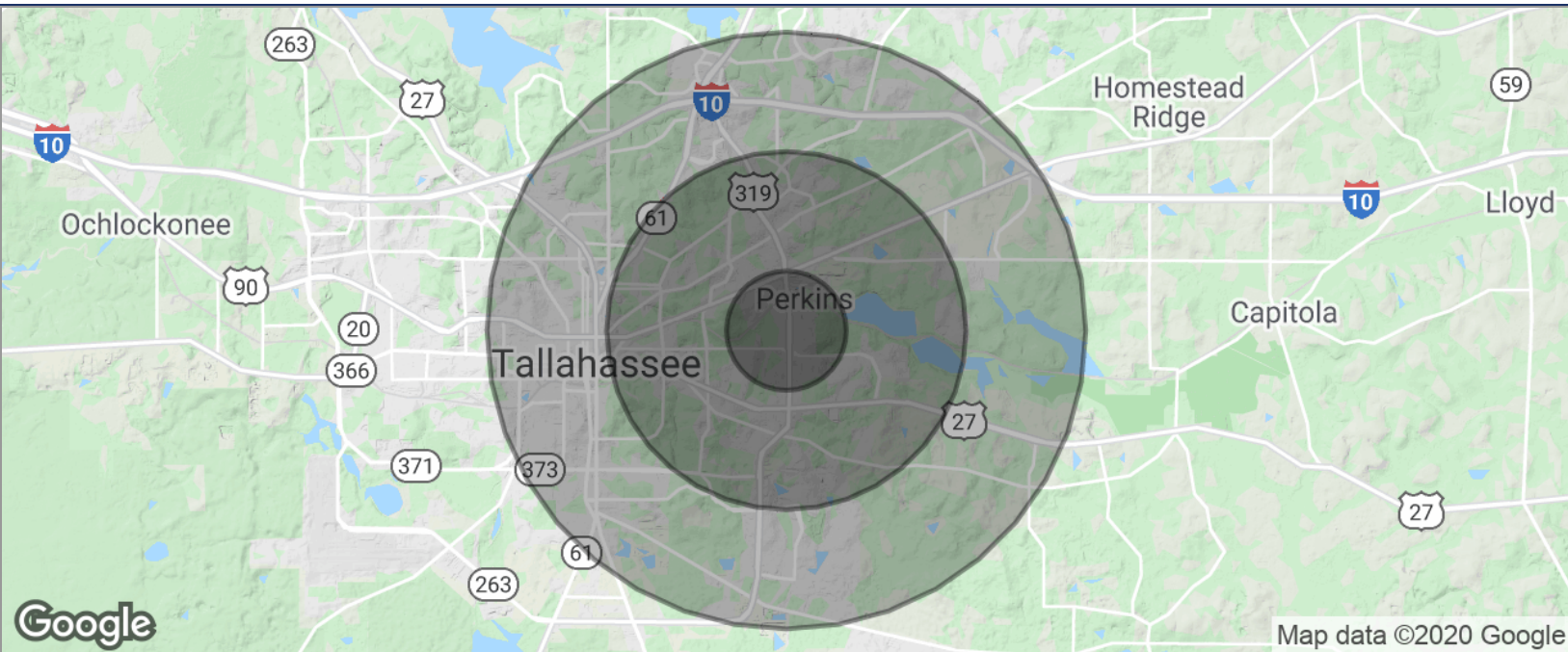




DEMOGRAPHICS MAP

2931 CRESCENT PARK DRIVE

TALLAHASSEE, FL 32303



POPULATION	1 MILE	3 MILES	5 MILES
TOTAL POPULATION	6,436	43,193	111,673
MEDIAN AGE	32.4	34.7	33.8
MEDIAN AGE (MALE)	30.5	33.3	32.9
MEDIAN AGE (FEMALE)	34.0	35.7	34.6
HOUSEHOLDS & INCOME	1 MILE	3 MILES	5 MILES
TOTAL HOUSEHOLDS	3,206	21,215	49,050
# OF PERSONS PER HH	2.0	2.0	2.3
AVERAGE HH INCOME	\$56,184	\$58,448	\$61,070
AVERAGE HOUSE VALUE	\$191,319	\$221,294	\$237,031

* Demographic data derived from 2010 US Census

Lewis Buford
 850.591.6363
 lewis@tlgproperty.com

TLG REAL ESTATE SERVICES
 3520 Thomasville Road, Suite 200, Tallahassee, FL 32309
 850.385.6363

